

SE-2, 10 JUL 2025 to 07 AUG 2025

CHARLOTTE DEP CON
120.05 307.8
ASOS
120.775
UNICOM
123.05

TOP ALTITUDE:
3000

RNAV 1 - DME/DME/IRU or GPS.
RADAR required.

BARMY FIVE DEPARTURE (RNAV)

(BARMY5.BARMY) 24081

AL-5361 (FAA)

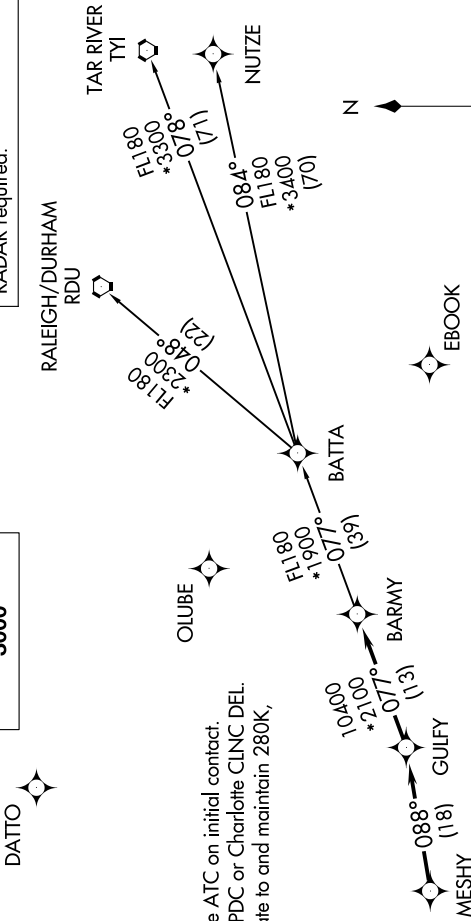
ROCK HILL/YORK COUNTY/BRYANT FLD (UZA)
ROCK HILL, SOUTH CAROLINA

NOTE: For turbo jets only.
NOTE: If unable to accept climb rates, advise ATC on initial contact.
NOTE: Transponder code will be issued via PDC or Charlotte CLNC DEL.
NOTE: Upon reaching 10000 MSL, accelerate to and maintain 280K, if unable advise ATC.

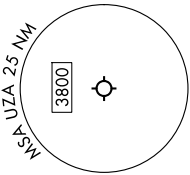
DEPARTURE ROUTE DESCRIPTION

Climb on heading assigned by ATC on RADAR vectors to MESHY, then on depicted route to BARMY. Then on assigned transition. Maintain 3000, expect clearance to filed altitude within 10 minutes after departure.

NUTZE TRANSITION (BARMY5.NUTZE)
RALEIGH/DURHAM TRANSITION (BARMY5.RDU)
TAR RIVER TRANSITION (BARMY5.TYI)



TAKEOFF MINIMUMS
Rwys 2, 20: Standard.



NOTE: Chart not to scale.

BARMY FIVE DEPARTURE (RNAV)

(BARMY5.BARMY) 21MAR24

ROCK HILL, SOUTH CAROLINA
ROCK HILL/YORK COUNTY/BRYANT FLD (UZA)

SE-2, 10 JUL 2025 to 07 AUG 2025