

WAAS CH 90305 W13A	APP CRS 134°	Rwy Idg TDZE 933 Apt Elev 934	5100
--	------------------------	---	-------------

RNAV (GPS) RWY 13
BARROW COUNTY (WDR)

RNP APCH.

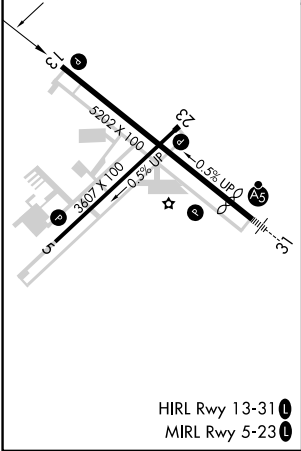
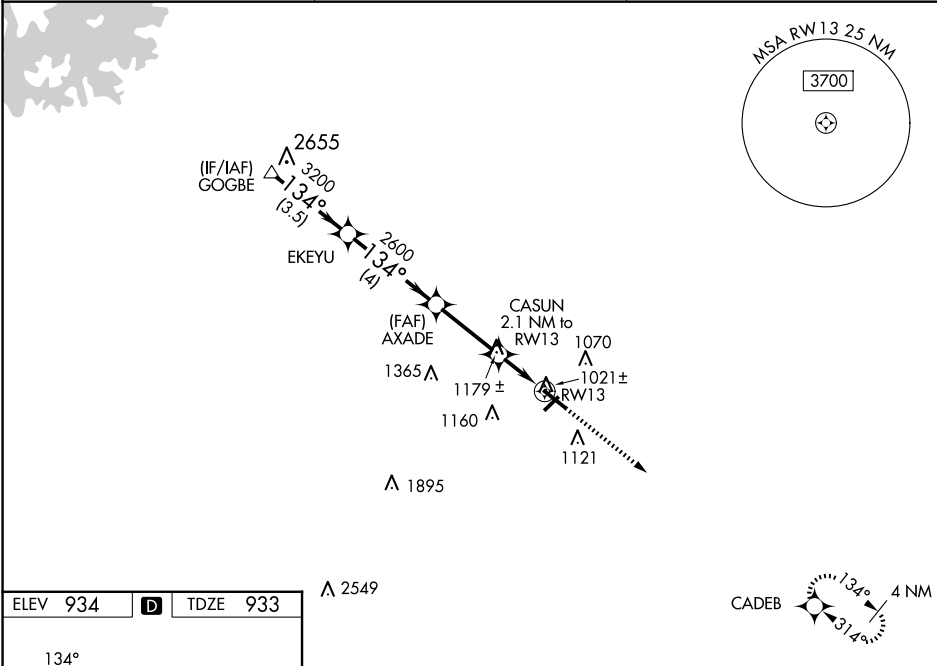
▼

▲

For uncompensated Baro-VNAV systems, LNAV/VNAV NA below -16°C or above 54°C. Straight-in Rwy 13 NA at night, Circling Rwy 13, 23 NA at night. Rwy 13 helicopter visibility reduction below 1 SM NA.

MISSED APPROACH: Climb to 3000 direct CADEB and hold.

AWOS-3 118.575	ATLANTA APP CON ★ 132.475 291.1	UNICOM 123.0 (CTAF) 0
--------------------------	---	---------------------------------



VGSI and RNAV glidepath not coincident (VGSI Angle 3.00/TCH 30°).				
3000 CADEB				
*LNAV only.				
RWY 13				
CATEGORY	A	B	C	D
LPV DA	1207-1 274 (300-1)			
LNAV/VNAV DA	1422-1 3/8 489 (500-1 3/8)			
LNAV MDA	1300-1 367 (400-1)			
CIRCLING	1400-1 466 (500-1)	1580-1 646 (700-1)	1660-2 726 (800-2)	1660-2 1/4 726 (800-2 1/4)

SE-4, 10 JUL 2025 to 07 AUG 2025

SE-4, 10 JUL 2025 to 07 AUG 2025