

RNP APCH.

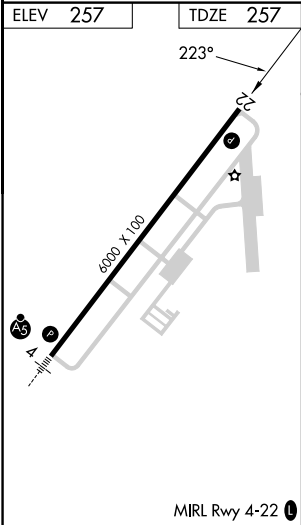
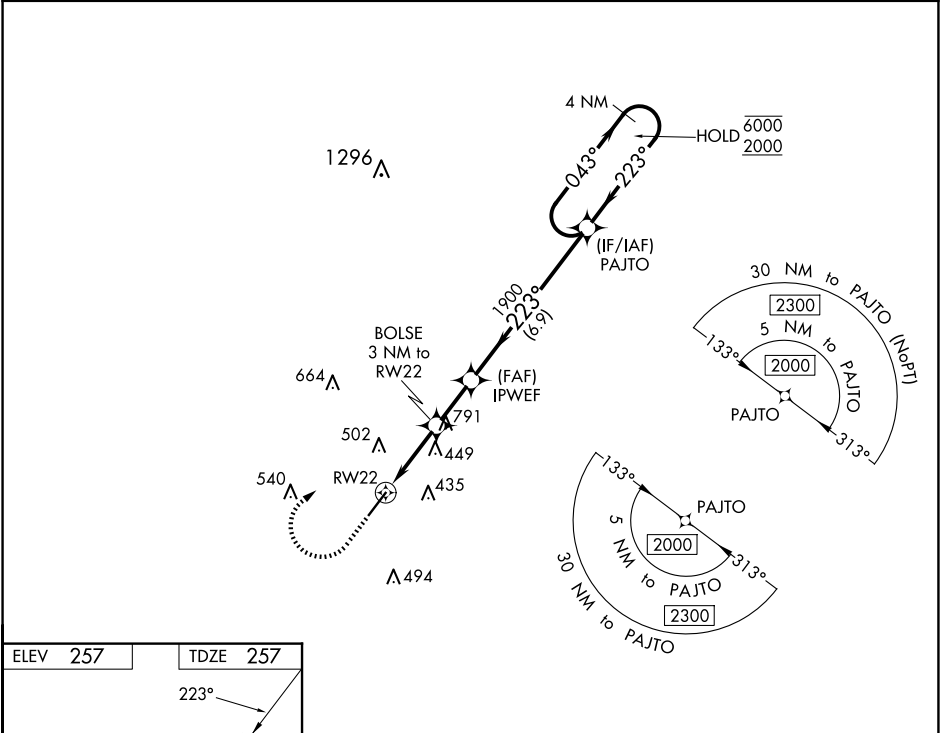
▼

▲

For uncompensated Baro-VNAV systems, LNAV/VNAV NA below -15°C or above 54°C.

MISSED APPROACH: Climb to 1200 then climbing right turn to 2000 direct PAJTO and hold.

AWOS-3 119.075	JACKSONVILLE CENTER 127.575 269.025	UNICOM 122.8 (CTAF) 0
--------------------------	---	---------------------------------



1200	2000	PAJTO	VGSI and RNAV glidepath not coincident (VGSI Angle 2.50/TCH 27).		4 NM Holding Pattern
*LNAV only.			IPWEF 1900	PAJTO	043° → 6000 ← 223° 2000
*1.8 NM to RW22		BOLSE 3 NM to RW22	*1240	1900	GP 3.00° TCH 40
1.8 NM		1.2 NM	2 NM	6.9 NM	
CATEGORY	A	B	C	D	
LPV DA	507-3/4		250 (300-3/4)		
LNAV/VNAV DA	567-7/8		310 (400-7/8)		
LNAV MDA	760-1 503 (600-1)		760-1 3/8 503 (600-1 3/8)		
CIRCLING	760-1 503 (600-1)		820-1 563 (600-1)		960-2 703 (800-2) 1160-3 903 (1000-3)