

WAAS CH 40106 W06A	APP CRS 056°	Rwy Idg TDZE 310 Apt Elev 310
----------------------------------------	------------------------	---------------------------------------------------

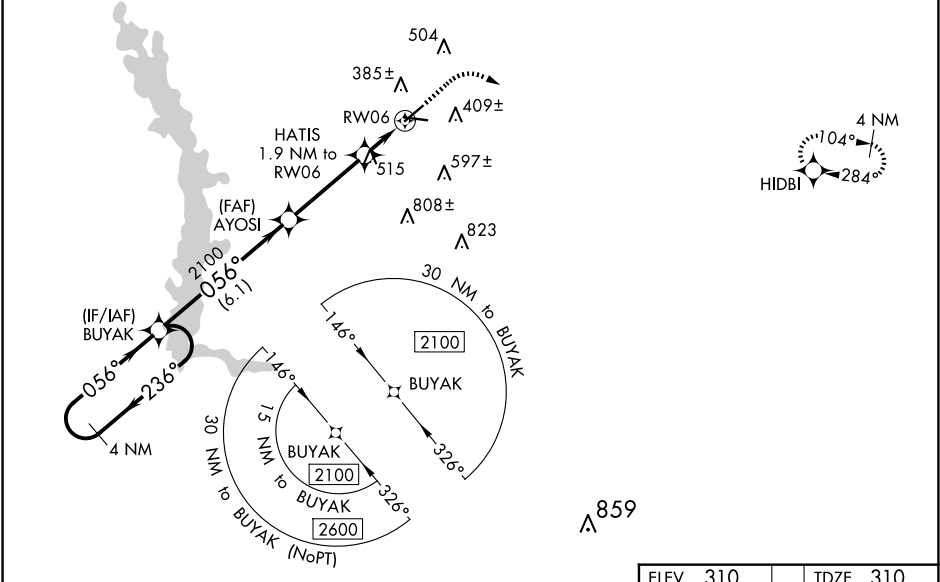
RNAV (GPS) RWY 6
CRISP COUNTY-CORDELE (CKF)

RNP APCH-GPS.

For uncompensated Baro-VNAV systems, LNAV/VNAV NA below -15°C or above 54°C. Rwy 6 helicopter visibility reduction below ¾ SM NA. Straight-in Rwy 6 NA at night, Circling Rwy 6, 24, 28 NA at night.

MISSED APPROACH: Climb to 800 then climbing right turn to 2100 direct HDBI and hold.

AWOS-3PT 119.325	JACKSONVILLE CENTER 125.75 363.075	UNICOM 123.050 (CTAF) 0
----------------------------	----------------------------------------------	------------------------------------------



4 NM Holding Pattern

BUYAK

AYOSI

HATIS 1.9 NM to RW06

RW06

GP 3.00° TCH 52

2100 ← 236° 056° → 2100

2100

*960

*1.3 NM to RW06

*LNAV only.

800 2100 HDBI

6.1 NM 3.6 NM 0.6 1.3

CATEGORY	A	B	C	D
LPV DA	573-1 263 (300-1)			
LNAV/VNAV DA	647-1 337 (300-1)			
LNAV MDA	780-1 470 (500-1)	780-1⅓ 470 (500-1⅓)		
CIRCLING	820-1 510 (600-1)	1080-2¼ 770 (800-2¼)	1160-2¾ 850 (900-2¾)	

ELEV 310 TDZE 310

MIRL Rwy 10-28 0
REIL Rwy 10 and 28 0

SE-4, 10 JUL 2025 to 07 AUG 2025

SE-4, 10 JUL 2025 to 07 AUG 2025