

WAAS CH 99305 W28A	APP CRS 284°	Rwy Idg 5001 TDZE 309 Apt Elev 310
--	------------------------	---

RNAV (GPS) RWY 28

CRISP COUNTY-CORDELE (CKF)

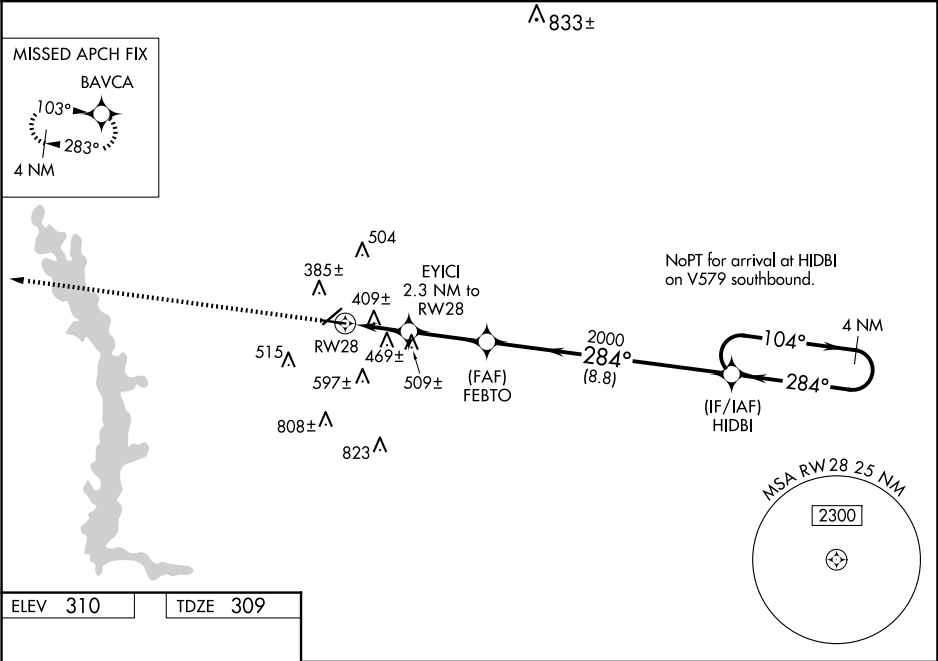
RNP APCH-GPS.

⚠

For uncompensated Baro-VNAV systems, LNAV/VNAV NA below -1.5°C or above 54°C. Rwy 28 helicopter visibility reduction below 1 SM NA. Straight-in and Circling Rwy 28 NA at night.

MISSED APPROACH: Climb to 2000 direct BAVCA and hold.

AWOS-3PT 119.325	JACKSONVILLE CENTER 125.75 363.075	UNICOM 123.050 (CTAF) 📻
----------------------------	--	--



ELEV 310

TDZE 309

2000

BAVCA

VGSI and RNAV glidepath not coincident (VGSI Angle 3.00°/TCH 45).

4 NM Holding Pattern

*LNAV only.

EYICI 2.3 NM to RW28

FEBTO

HIDBI

2000

1080*

2000

284°

104°

2100

GP 3.00° TCH 55

CATEGORY	A	B	C	D
LPV DA	669-1⅓ 360 (400-1⅓)			
LNAV/VNAV DA	769-1½ 460 (500-1½)			
LNAV MDA	720-1	411 (500-1)	720-1⅓	411 (500-1⅓)
📻 CIRCLING	820-1	510 (600-1)	1080-2¼ 770 (800-2¼)	1160-2¾ 850 (900-2¾)