

WAAS CH 90206 W24A	APP CRS 236°	Rwy Idg 4868 TDZE 308 Apt Elev 310
--	------------------------	---

RNAV (GPS) RWY 24

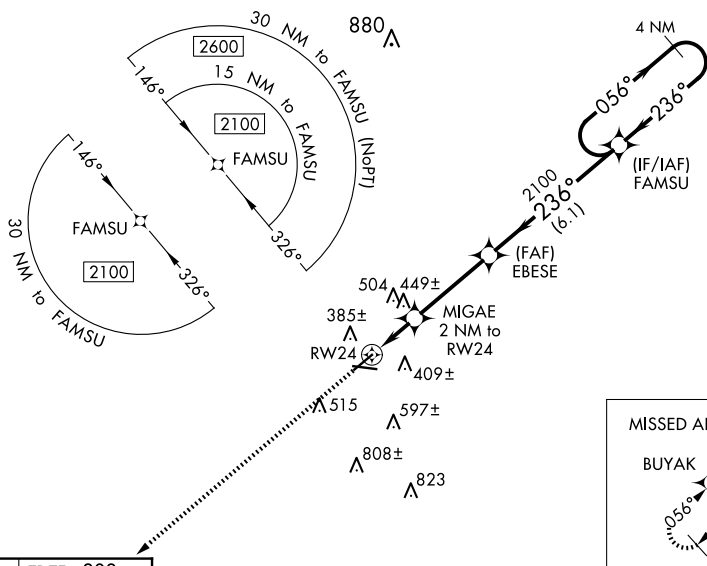
CRISP COUNTY-CORDELE (CKF)

RNP APCH-GPS.

⚠ For uncompensated Baro-VNAV systems, LNAV/VNAV NA below -15°C or above 54°C. Rwy 24 helicopter visibility reduction below ¾ SM NA. Straight-in Rwy 24 NA at night, Circling Rwy 6, 24, 28 NA at night.

MISSED APPROACH: Climb to 2100 direct BUYAK and hold.

AWOS-3PT 119.325	JACKSONVILLE CENTER 125.75 363.075	UNICOM 123.050 (CTAF) ①
----------------------------	--	-----------------------------------

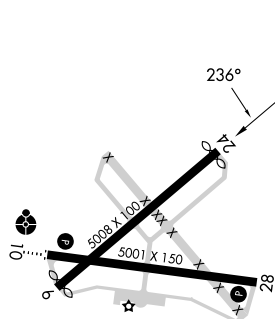


MISSED APCH FIX

BUYAK

4 nm

ELEV 310		TDZE 308
----------	--	----------



2100	BUYAK
------	-------

*LNAV only.

1

1000

RW/24

RW 24



CATEGORY	DESCRIPTION	AMOUNT	DATE
1
2
3
4
5
6
7
8
9
10
11
12
13
14
15
16
17
18
19
20
21
22
23
24
25
26
27
28
29
30
31
32
33
34
35
36
37
38
39
40
41
42
43
44
45
46
47
48
49
50
51
52
53
54
55
56
57
58
59
60
61
62
63
64
65
66
67
68
69
70
71
72
73
74
75
76
77
78
79
80
81
82
83
84
85
86
87
88
89
90
91
92
93
94
95
96
97
98
99
100

[illegible]

LPV DA

LNAV/DA

VNAV

INLAY MDA

LNAV MDA

CIRCLING

CIRCLING

CORDELE, GEORGIA

Amdt 1B 08SEP22

31°59'N-83°46'W

CRISP COUNTY-CORDELE (CKF)
RNAV (GPS) RWY 24

SE-4, 10 JUL 2025 to 07 AUG 2025