

| | | |
|--|------------------------|---|
| WAAS CH 57905 W10A | APP CRS 103° | Rwy Idg 5001 TDZE 308 Apt Elev 310 |
|--|------------------------|---|

RNAV (GPS) RWY 10

CRISP COUNTY-CORDELE (CKF)

RNP APCH-GPS.

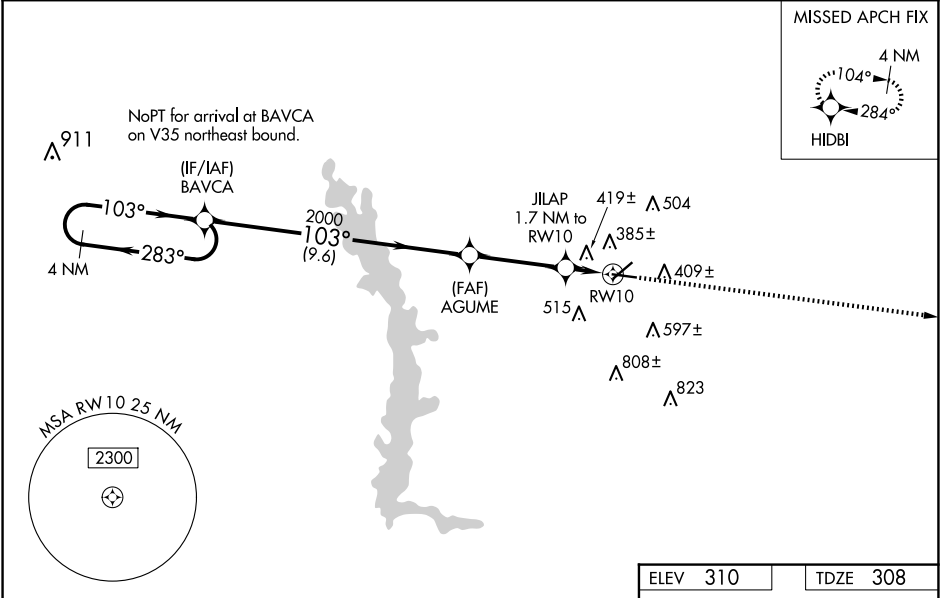
▼

For uncompensated Baro-VNAV systems, LNAV/VNAV NA below -15°C or above 54°C. Rwy 10 helicopter visibility reduction below ¾ SM NA. Circling Rwy 28 NA at night. Inop table does not apply to LPV and LNAV all Cats. For inop ALS, increase LNAV/VNAV Cat A/B visibility to 1½ SM.

ODALS

MISSED APPROACH: Climb to 2100 direct HIDBI and hold.

| | | |
|----------------------------|--|---------------------------------|
| AWOS-3PT 119.325 | JACKSONVILLE CENTER 125.75 363.075 | UNICOM 123.050 (CTAF) |
|----------------------------|--|---------------------------------|



ELEV 310

TDZE 308

VGSI and RNAV glidepath not coincident (VGSI Angle 3.00/TCH 42).

4 NM Holding Pattern

2100

HIDBI

*LNAV only.

| CATEGORY | A | B | C | D |
|---------------|-------------------|---|-------------------------|-------------------------|
| LPV DA | 612-1 | | 304 (400-1) | |
| LNAV/ VNAV DA | 726-1¼ | | 418 (300-1¼) | |
| LNAV MDA | 680-1 | | 372 (400-1) | |
| CIRCLING | 820-1 510 (600-1) | | 1080-2¼ 770 (800-2¼) | 1160-2¾ 850 (900-2¾) |

MIRL Rwy 10-28

REIL Rwy 10 and 28