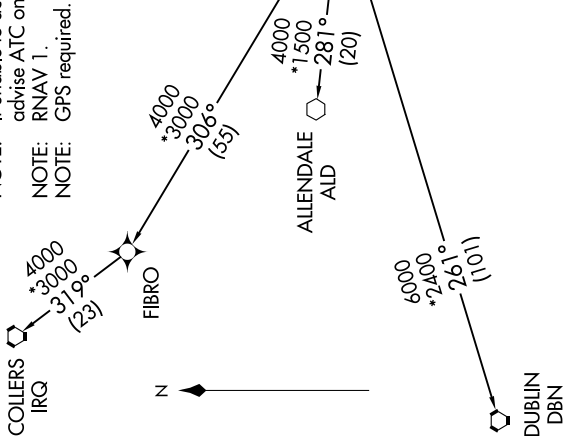


AWOS-3
123.775
CLNC DEL
119.85
CTAF
122.8
CHARLSTON DEP CON
120.7 306.925

TAKEOFF MINIMUMS

Rwy 4: ATC climb of 500' per NM to 900.
Rwy 9: ATC climb of 500' per NM to 800.
Rwy 22: Standard with minimum climb of 245' per NM to 520. ATC climb of 500' per NM to 1300.
Rwy 27: ATC climb of 500' per NM to 1500.

- NOTE: Transponder code will be issued by Charleston clearance delivery.
NOTE: If unable to accept climb rate, advise ATC on initial contact.
NOTE: RNAV 1.
NOTE: GPS required.



NOTE: Chart not to scale.

EXECUTIVE ONE DEPARTURE (RNAV)

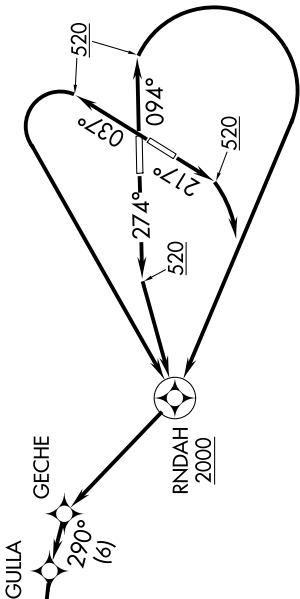
CHARLSTON EXEC (JZI)
CHARLSTON, SOUTH CAROLINA

DEPARTURE ROUTE DESCRIPTION

TAKEOFF RUNWAY 4: Climb heading 037° to 520 MSL, then left turn direct RNDAH, cross RNDAH at or above 2000, direct GECH and then on depicted route to PLFMD, thence. . . . TAKEOFF RUNWAY 9: Climb heading 094° to 520 MSL, then right turn direct RNDAH, cross RNDAH at or above 2000, direct GECH and then on depicted route to PLFMD, thence. . . . TAKEOFF RUNWAY 22: Climb heading 217° to 520 MSL, then right turn direct RNDAH, cross RNDAH at or above 2000, direct GECH and then on depicted route to PLFMD, thence. . . . TAKEOFF RUNWAY 27: Climb heading 274° to 520 MSL, then direct RNDAH, cross RNDAH at or above 2000, direct GECH and then on depicted route to PLFMD, thence. . . .

. . . via assigned transition, maintain 2000. Expect clearance to filed altitude/flight level within ten (10) minutes after departure.

ALLEDALE TRANSITION (EXTVE1.ALD)
COLLIERS TRANSITION (EXTVE1.IRQ)
DUBLIN TRANSITION (EXTVE1.DBN)



EXECUTIVE ONE DEPARTURE (RNAV)

CHARLSTON, SOUTH CAROLINA
CHARLSTON EXEC (JZI)