

WAAS CH <b>90412</b> <b>W31A</b>	APP CRS <b>310°</b>	Rwy Idg <b>5505</b> TDZE <b>1162</b> Apt Elev <b>1162</b>
--	------------------------	---

RNAV (GPS) RWY 31  
FAIRMONT MUNI (FRM)

RNP APCH-GPS

**T** For uncompensated Baro-VNAV systems, procedure NA below -17° C or above 54°C. For inop ALS, increase LPV all Cats visibility to  $\frac{7}{8}$  SM and LNAV/VNAV all Cats visibility to  $1\frac{1}{2}$  SM.

MALSR



**MISSED APPROACH:** Climb to 3100 direct UCEVA and hold.

AWOS-3PT  
120.025

MINNEAPOLIS CENTER  
127.75 257.7

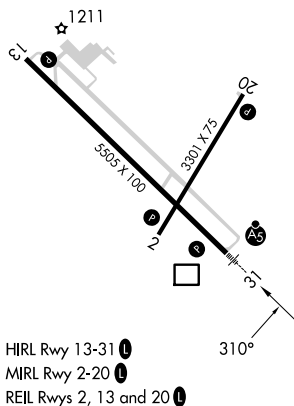
UNICOM  
122.8 (CTAF) **L**

MISSED APCH FIX

[illegible]

ELEV 1162

TDZE 1162



FAIRMONT, MINNESOTA

Orig-B 07OCT21

43°39'N-94°25'W

FAIRMONT MUNI (FRM)

## RNAV (GPS) RWY 31

Diagram illustrating the NAYIG 3100 holding pattern. The pattern is a 4 NM Holding Pattern with a 3100° heading. The pattern consists of a 1.6 NM leg from RW31 to the start of the holding pattern, followed by a 4.2 NM leg to the 3100° heading, and a 6 NM leg to the 3100° heading. The holding pattern is a 4 NM Holding Pattern with a 3100° heading. The diagram also shows the VGS1 and RNAV glidepath not coincident (VGS1 Angle 3.00/TCH 40).