

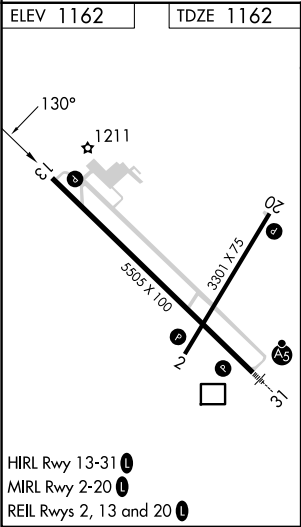
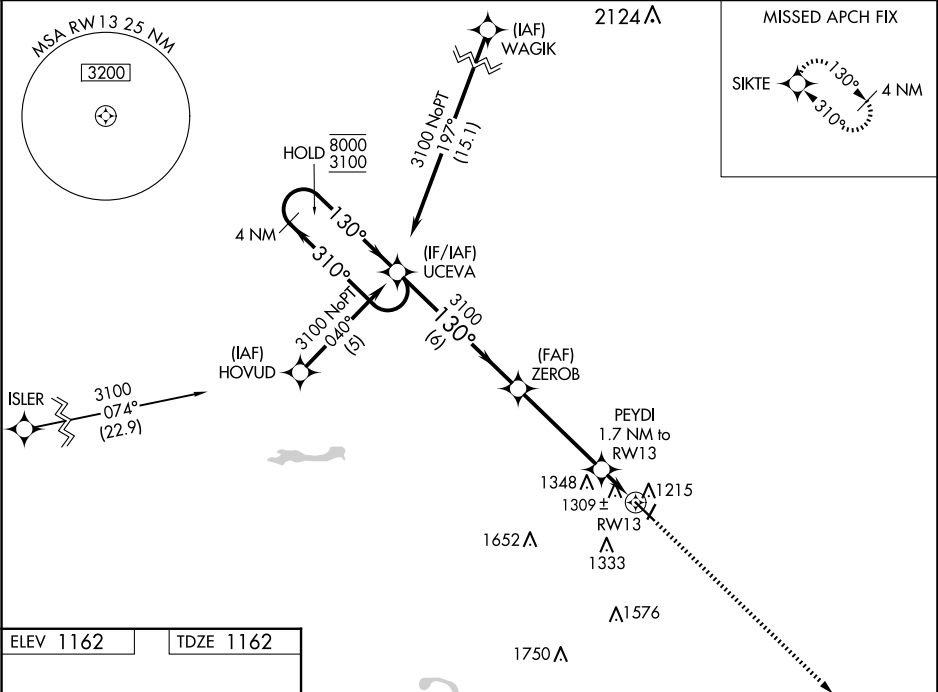
WAAS CH 45812 W13A	APP CRS 130°	Rwy Idg TDZE 1162 Apt Elev 1162
--	------------------------	---

RNAV (GPS) RWY 13

FAIRMONT MUNI (FRM)

RNP APCH-GPS.	MISSED APPROACH: Climb to 3100 direct SIKTE and hold.
<div><div></div><div></div></div> <div>For uncompensated Baro-VNAV systems, procedure NA below -17°C or above 54°C. Rwy 13 helicopter visibility reduction below ¾ SM NA.</div>	

AWOS-3PT 120.025	MINNEAPOLIS CENTER 127.75 257.7	UNICOM 122.8 (CTAF) 0
----------------------------	---	---------------------------------



VGSI and RNAV glidepath not coincident (VGSI Angle 3.00/TCH 43).				3100	SIKTE
4 NM Holding Pattern				UCEVA	ZEROB
8000 3100				3100	PEYDI 1.7 NM to RWY 13
GP 3.00° TCH 48				1740	1.1 NM to RWY 13
				6 NM	4.2 NM
CATEGORY	A	B	C	D	
LPV DA	1460-1 298 (300-1)				
LNAV/VNAV DA	1695-2 533 (600-2)				
LNAV MDA	1560-1 398 (400-1)	1560-1 398 (400-1 1/8)	1560-1 398 (400-1 1/4)	1560-1 398 (400-1 1/4)	
CIRCLING	1660-1 498 (500-1)	1980-2 818 (900-2 1/2)	1980-2 818 (900-2 3/4)	1980-2 818 (900-2 3/4)	