

WAAS CH 93604 W07A	APP CRS 065°	Rwy Idg TDZE Apt Elev	5000 990 993
--	------------------------	-----------------------------	---

RNAV (GPS) RWY 7

MARION MUNI (MNN)

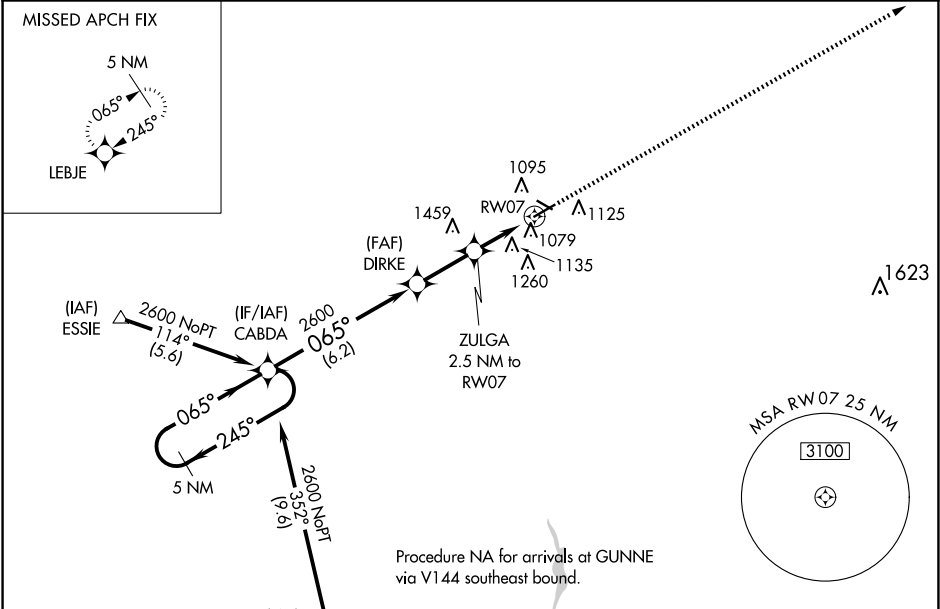
▼

⚠

When local altimeter setting not received, use Ohio State University altimeter setting and increase LPV DA to 1327 feet, increase LNAV/VNAV DA to 1574 feet; increase all MDAs 100 feet and visibility Cat C/D ¼ SM. Baro-VNAV NA when using Ohio State University altimeter setting. For uncompensated Baro-VNAV systems, LNAV/VNAV NA below -16°C (4°F) or above 46°C (114°F). Visibility reduction by helicopters NA. DME/DME RNP-0.3 NA.

MISSED APPROACH:
Climb to 3000 direct
LEBJE and hold.

ASOS 119.975	CLEVELAND APP CON ★ 128.35 360.65	CLNC DEL 126.8	UNICOM 122.8 (CTAF) 0
------------------------	---	--------------------------	---------------------------------



ELEV 993		TDZE 990	
5 NM Holding Pattern		VGSI and RNAV glidepath not coincident (VGSI Angle 3.00/TCH 24).	
CABDA		DIRKE	
2600 ← 245° 065° →		2600	
GP 3.00° TCH 40		*1820	
6.2 NM		2.4 NM	
2.5 NM		RW07	
CATEGORY	A	B	C
LPV DA	1240-1	250 (300-1)	
LNAV/VNAV DA	1379-1½	389 (400-1½)	
LNAV MDA	1440-1 450 (500-1)	1440-1¼ 450 (500-1¼)	1440-1½ 450 (500-1½)
CIRCLING	1480-1 487 (500-1)	1500-1 507 (600-1)	1700-2 707 (800-2)
			1820-2¾ 827 (900-2¾)
REIL Rwy 7, 13, 25 and 31 0		MIRL Rwy 7-25 and 13-31 0	