

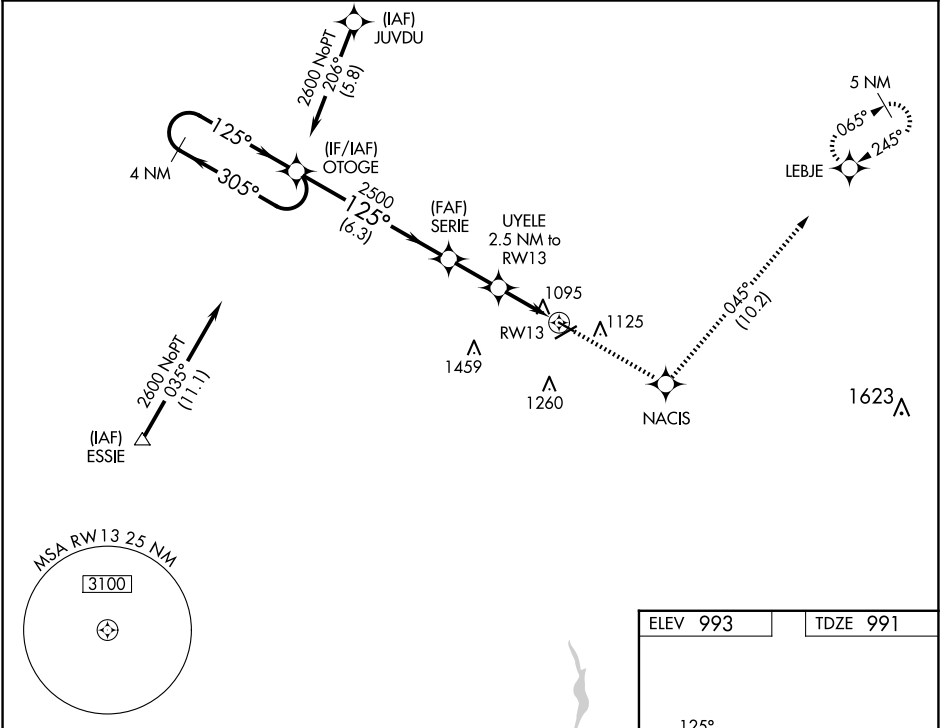
APP CRS	Rwy Idg	3498
125°	TDZE	991
	Apt Elev	993

RNAV (GPS) RWY 13

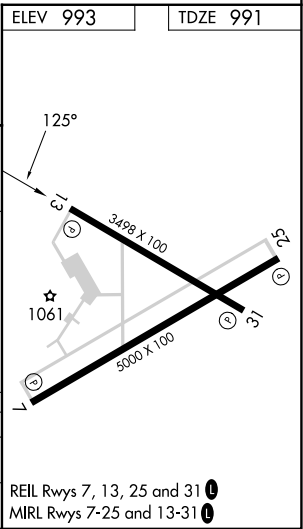
MARION MUNI (MNN)

RNP APCH.	MISSED APPROACH: Climb to 3000 direct NACIS and on track 045° to LEBJE and hold.
<div><div>▼</div><div>Rwy 13 helicopter visibility reduction below ¾ SM NA. VDP NA when using Ohio State University altimeter setting. When local altimeter setting not received, use Ohio State University altimeter setting: increase all MDAs 100 feet and visibility Cat C/D ¾ SM.</div></div>	

ASOS 119.975	CLEVELAND APP CON ★ 128.35 360.65	CLNC DEL 126.8	UNICOM 122.8 (CTAF) 0
-----------------	--------------------------------------	-------------------	--------------------------



VGSI and descent angles not coincident (VGSI Angle 3.00/TCH 21).				
<div><div>4 NM Holding Pattern</div><div>OTOGE</div><div>SERIE</div><div>UYELE 2.5 NM to RW13</div><div>RW13</div><div>LEBJE</div></div>				
<div><div>2600</div><div>305°</div><div>125°</div><div>125°</div><div>2500</div><div>3.04°</div><div>TCH 40</div><div>1800</div><div>1.1 NM to RW13</div><div>1.1</div></div>				
<div><div>6.3 NM</div><div>2.1 NM</div><div>1.4 NM</div><div>1.1</div></div>				
CATEGORY	A	B	C	D
LNVA MDA	1360-1 369 (400-1)			1360-1¼ 369 (400-1¼)
CIRCLING	1480-1 487 (500-1)	1500-1 507 (600-1)	1700-2 707 (800-2)	1820-2¾ 827 (900-2¾)



EC-2, 10 JUL 2025 to 07 AUG 2025

EC-2, 10 JUL 2025 to 07 AUG 2025