

VORTAC FST 116.9 Chan 116	APP CRS 116°	Rwy Ldg 7508 TDZE 3002 Apt Elev 3011
---	------------------------	---

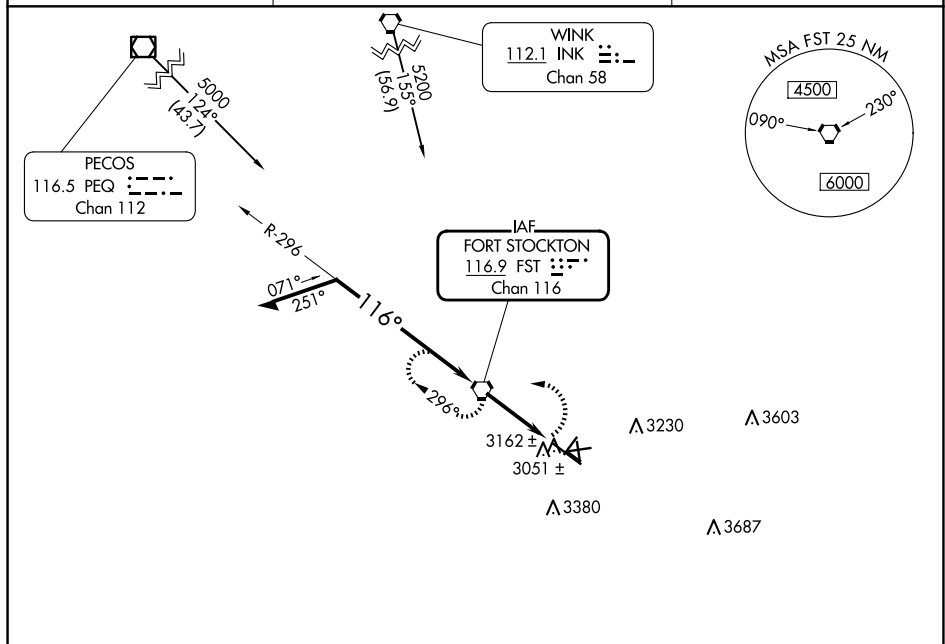
VOR RWY 12

FORT STOCKTON-PECOS COUNTY (FST)

T Circling NA to Rwy 7-25, 11-29 and 16-34.
A Circling Rwy 3, 21, 30 NA at night.

MISSED APPROACH: Climbing left turn to 5000 direct FST VORTAC and hold.

ASOS 118.525	ALBUQUERQUE CENTER 135.875 292.15	UNICOM 122.8 (CTAF) 0
------------------------	---	---------------------------------



A 4064

FST
VORTAC

Remain within 10 NM

4800 → 296°
→ 116°

VGSI and descent angles not coincident (VGSI Angle 3.00/TCH 45).

4200 ✱

TCH 45

3.2 NM

5000 ← FST

FST 3.2

CATEGORY	A	B	C	D
S-12	3500-1	498 (500-1)	3500-1¼ 498 (500-1¼)	3500-1½ 498 (500-1½)
CIRCLING	3540-1 529 (600-1)	3660-1 649 (700-1)	3740-2 729 (800-2)	3760-2½ 749 (800-2½)

MRL Rwy's 3-21 and 12-30

FAF to MAP 3.2 NM

Knots	Min:	Sec:	60	90	120	150	180
3:12	2:08	1:36	1:17	1:04			