

APP CRS
298°

Rwy Ldg
TDZE
Apt Elev

7508
3011
3011

RNAV (GPS) RWY 30

FORT STOCKTON-PECOS COUNTY (FST)

RNP APCH.

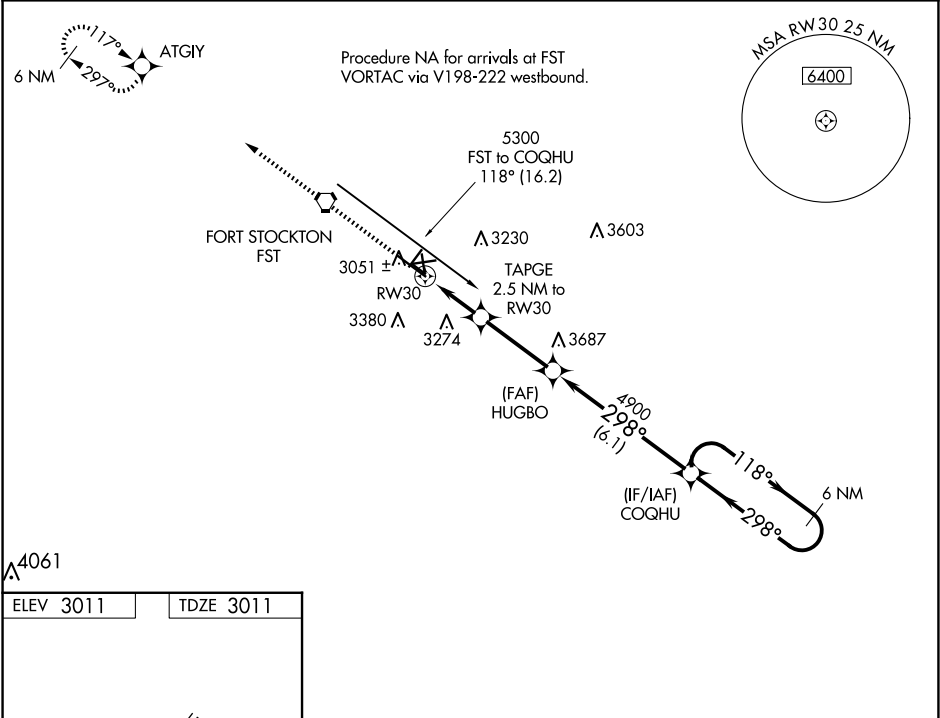
▼

▲

Rwy 30 helicopter visibility reduction below 1 SM NA. When local altimeter setting not received, use Pecos altimeter setting and increase all MDA 160 feet, increase LNAV Cat C/D visibility ½ mile, Circling Cat C visibility ¾ mile, Cat D visibility ½ mile. Circling NA to Rwys 7-25, 11-29 and 16-34. Straight-in Rwy 30 NA at night, Circling Rwy 3, 21, 30 NA at night.

MISSED APPROACH: Climb to 5100 direct ATGIY and hold.

ASOS 118.525	ALBUQUERQUE CENTER 135.875 292.15	UNICOM 122.8 (CTAF) 0
------------------------	---	---------------------------------



ELEV 3011

TDZE 3011

5100

ATGIY

VGSI and descent angles not coincident (VGSI Angle 3.00/TCH 45).

6 NM Holding Pattern

TAPGE
2.5 NM to RW30

HUGBO

COQHU

3860

4900

5300

2.5 NM

3.2 NM

6.1 NM

CATEGORY	A	B	C	D
LNAV MDA	3500-1	489 (500-1)	3500-1¼ 489 (500-1¼)	3500-1½ 489 (500-1½)
CIRCLING	3540-1 529 (600-1)	3660-1 649 (700-1)	3740-2 729 (800-2)	3760-2½ 749 (800-2½)