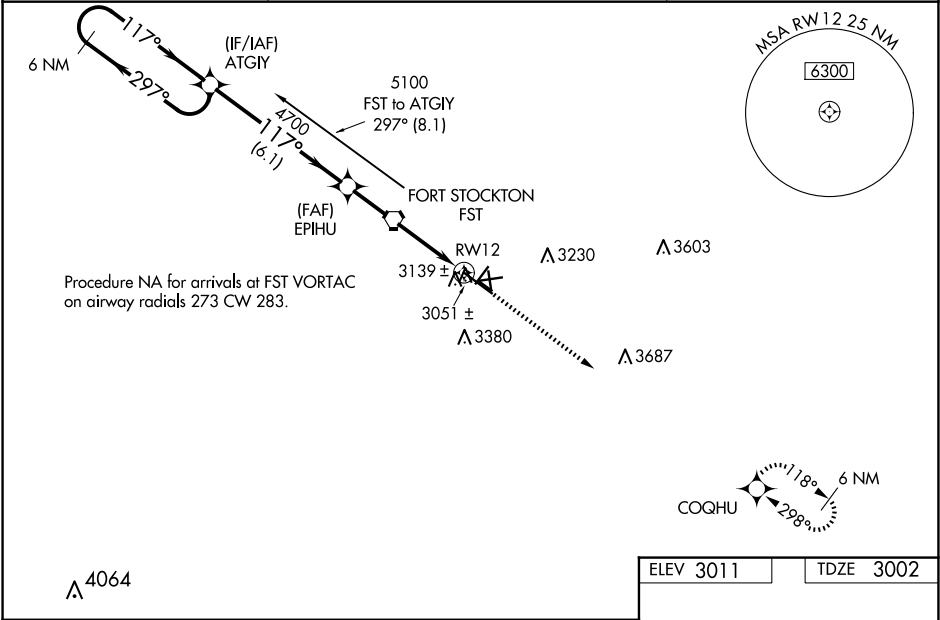


WAAS CH 78014 W12A	APP CRS 117°	Rwy Ldg 7508 TDZE 3002 Apt Elev 3011
--	------------------------	---

RNAV (GPS) RWY 12

FORT STOCKTON-PECOS COUNTY (FST)

RNP APCH. ▼ For uncompensated Baro-VNAV systems, LNAV/VNAV NA below -21°C (-5°F) or above 43°C (109°F). When local altimeter setting not received, use Pecos altimeter setting and increase all DA 152 feet and all MDA 160 feet, increase LPV visibility ½ mile all Cats, LNAV/VNAV visibility ½ mile all Cats, LNAV Cat C/D visibility ½ mile, Circling Cat C visibility ¾ mile, Cat D visibility ½ mile. Baro-VNAV and VDP NA when using Pecos altimeter setting. Circling NA to Rwys 7-25, 11-29 and 16-34. Circling Rwy 3, 21, 30 NA at night. ▲		MISSED APPROACH: Climb to 5200 direct COGHU and hold.
ASOS 118.525	ALBUQUERQUE CENTER 135.875 292.15	UNICOM 122.8 (CTAF) 0



6 NM Holding Pattern		ATGIY	5200	COGHU
GP 3.00° TCH 45		EPIHU	*LNAV only.	
5100		4700	*1.4 NM to RW12	
6.1 NM		3.8 NM	1.4	
CATEGORY	A	B	C	D
LPV DA	3252-1 250 (300-1)			
LNAV/VNAV DA	3409-1½ 407 (400-1½)			
LNAV MDA	3480-1	478 (500-1)	3480-1¼ 478 (500-1¼)	3480-1½ 478 (500-1½)
CIRCLING	3540-1 529 (600-1)	3660-1 649 (700-1)	3740-2 729 (800-2)	3760-2½ 749 (800-2½)

ELEV 3011

TDZE 3002

MIRL Rwys 3-21 and 12-30 **0**