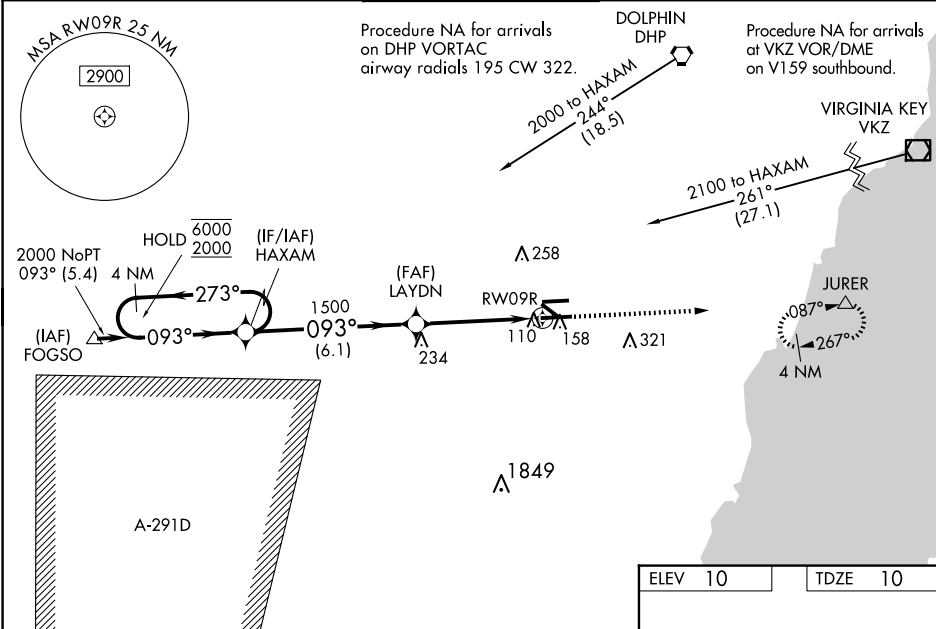


WAAS CH <b>72900</b> <b>W09A</b>	APP CRS <b>093°</b>	Rwy Idg TDZE Apt Elev	<b>6000</b> <b>10</b> <b>10</b>
--	------------------------	-----------------------------	---------------------------------------

RNAV (GPS) RWY 9R  
MIAMI EXEC (TMB)

RNP APCH. <div>⚠ Circling Rwy 13, 31 NA at night. For uncompensated Baro-VNAV systems, LNAV/VNAV NA below -15°C or above 43°C. Baro-VNAV and VDP NA when using Miami Intl altimeter setting. When local altimeter setting not received, use Miami Intl altimeter setting and increase all DA by 27 feet and all MDA 40 feet, increase LNAV Cats C/D visibility ½ SM. For inop ALS when using Miami Intl altimeter setting, increase LNAV/VNAV all Cats visibility to ¾ SM, and LNAV Cat C/D visibility to 1 ½ SM.</div>	MALSR <div>⚠</div>	MISSED APPROACH: Climb to 3000 direct JURER and hold, continue climb-in-hold to 3000.
--	-----------------------	--

ATIS <b>124.0</b>	MIAMI APP CON <b>125.5 354.1</b>	MIAMI EXEC TOWER★ <b>118.9 (CTAF) 0</b>	GND CON <b>121.7</b>	CLNC DEL <b>133.0</b>
----------------------	-------------------------------------	--	-------------------------	--------------------------



4 NM Holding Pattern HAXAM		VGS1 and RNAV glidepath not coincident (VGS1 Angle 3.00/TCH 55).		3000 JURER
6000 ← 273°		LAYDN 1500		*LNAV only.
2000 → 093°		1500		
GP 3.00° TCH 50		1500		
		6.1 NM		
		3.3 NM		
		1.2 NM		
CATEGORY	A	B	C	D
LPV DA		210-½	200 (200-½)	
LNAV/VNAV DA		302-½	292 (300-½)	
LNAV MDA	460-½	450 (500-½)	460-⅞	450 (500-⅞)
CIRCLING	460-1 450 (500-1)	560-1 550 (600-1)	640-1¾ 630 (700-1¾)	640-2 630 (700-2)

