

LOC I-TMB <b>108.7</b>	APP CRS <b>093°</b>	Rwy Idg <b>6000</b> TDZE <b>10</b> Apt Elev <b>10</b>
---------------------------	------------------------	---

ILS or LOC RWY 9R  
MIAMI EXEC (TMB)

▼  
▲

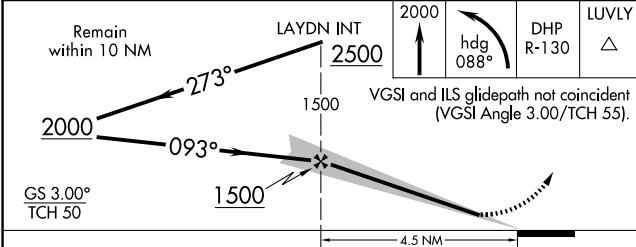
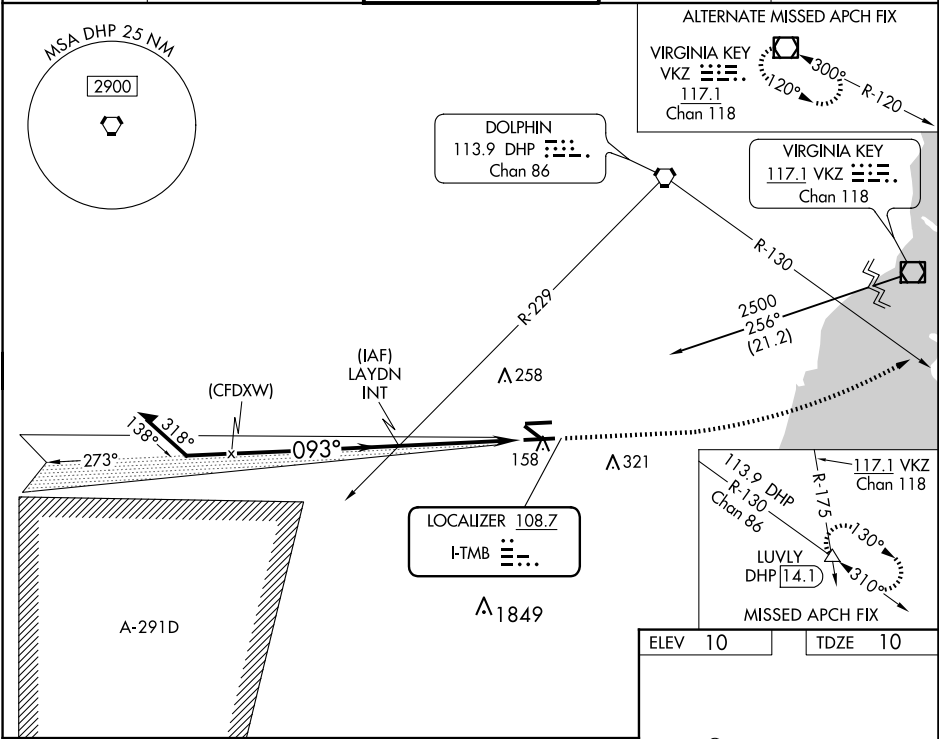
Circling Rwy 13, 31 NA at night. For inop ALS when using Miami Intl altimeter setting, increase Cat C/D visibility to 1½ SM. When local altimeter setting not received, use Miami Intl altimeter setting and increase S-ILS 9R DA to 237 feet and all MDA 40 feet, increase S-LOC 9R Cat C/D visibility ½ SM.

MALSR

AS

MISSED APPROACH: Climb to 2000 then left turn on heading 088° and DHP VORTAC R-130 to LUVLY INT/DHP 14.1 DME and hold.

ATIS <b>124.0</b>	MIAMI APP CON <b>125.5 354.1</b>	MIAMI EXEC TOWER★ <b>118.9 (CTAF)</b> 0	GND CON <b>121.7</b>	CLNC DEL <b>133.0</b>
----------------------	-------------------------------------	--	-------------------------	--------------------------



ELEV 10	TDZE 10
---------	---------

5003 X 150

27R

TWR 111

51 4001 X 150

6000 X 150

27L

093°

REIL Rwy 13  
HIRL Rwy 9R-27L  
MIRL Rwy 9L-27R  
MIRL Rwy 13-31

FAF to MAP 4.5 NM

Knots	60	90	120	150	180
Min:Seq	4:30	3:00	2:15	1:48	1:30