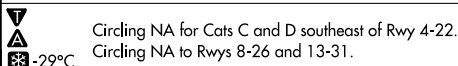


WAAS CH 48824 W22A	APP CRS 228°	Rwy Ldg 5701 TDZE 4652 Apt Elev 4659
--	------------------------	---

RNAV (GPS) RWY 22
MISSION FLD (LVM)

RNP APCH - GPS.

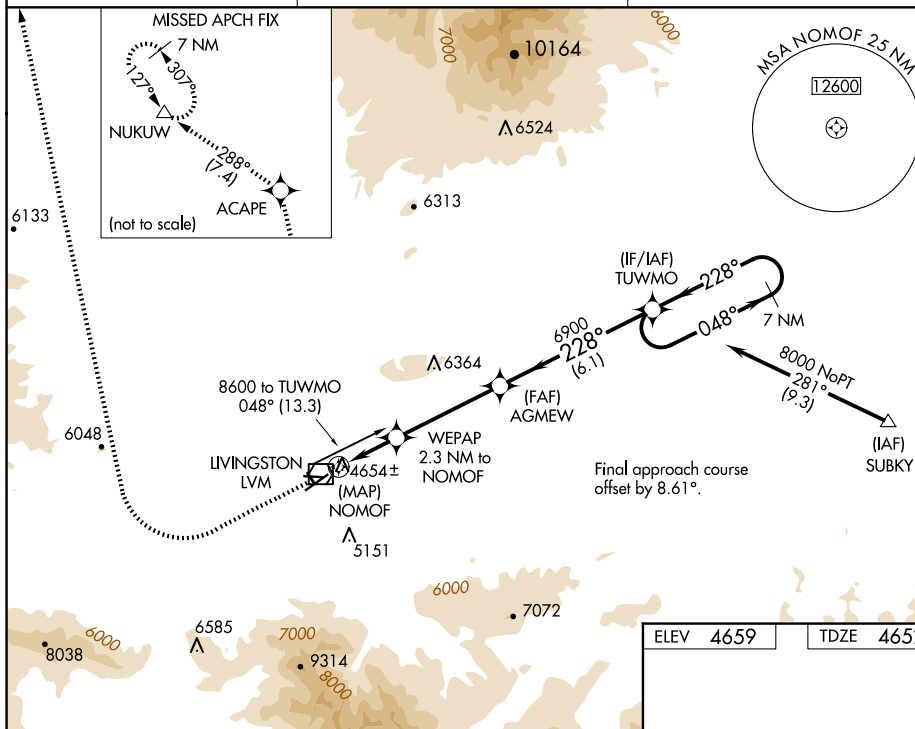


MISSED APPROACH: Climb to 5400 on course 228° then climbing right turn to 10000 direct ACAPE and on track 288° to NUKUW and hold.

ASOS
135.275

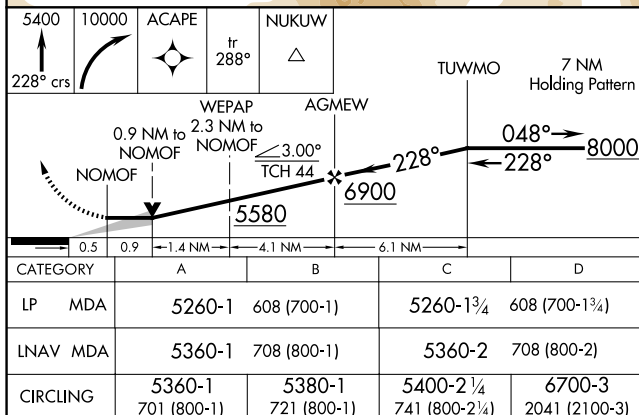
BIG SKY APP CON ★
119.55 235.775

UNICOM
123.0 (CTAF) **L**



Final approach course
offset by 8.61° .

ELEV	4659		TDZE	4652
------	------	--	------	------



REIL Rwy 22
MRL Rwy 4-22

LIVINGSTON, MONTANA

Orig-C 25JAN24

45°42'N-110°27'W

MISSION FLD (LVM)

RNAV (GPS) RWY 22

NW-1, 10 JUL 2025 to 07 AUG 2025