

NE-2, 10 JUL 2025 to 07 AUG 2025

FISHERS ISLAND, NEW YORK

AL-5345 (FAA)

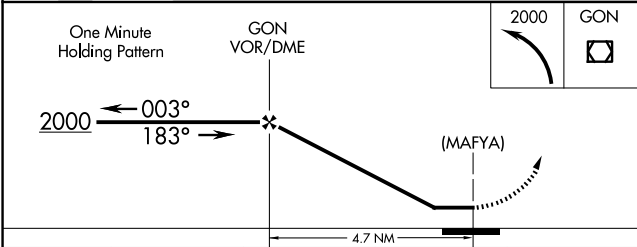
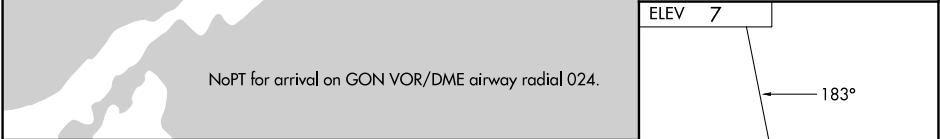
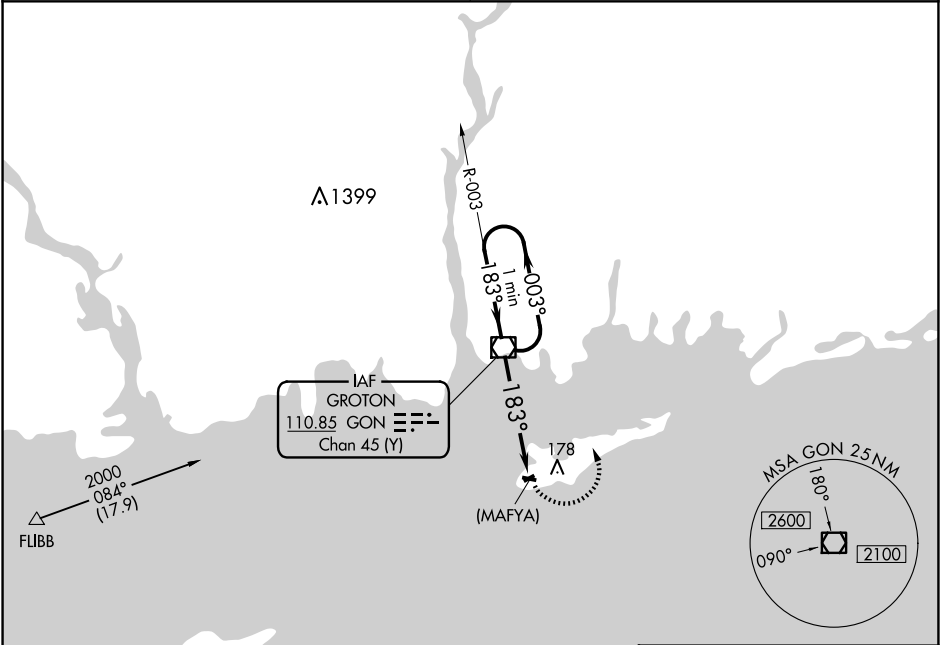
23334

VOR/DME GON	APP CRS	Rwy Idg	N/A
110.85	183°	TDZE	N/A
Chan 45 (Y)		Apt Elev	7

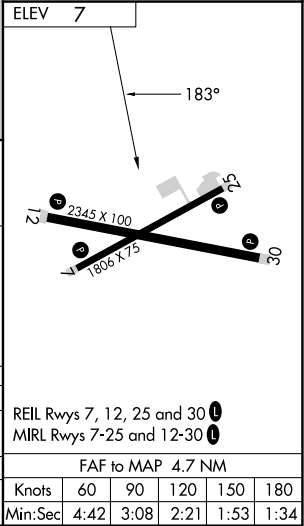
VOR or GPS-A
ELIZABETH FLD (ØB8)

<div>▼</div> <div>▲ NA</div>	Use Groton-New London altimeter setting; when not received, use Block Island State altimeter setting. Procedure NA at night.	MISSED APPROACH: Climbing left turn to 2000 direct GON VOR/DME and hold.
------------------------------	--	--

PROVIDENCE APP CON ★ 125.75 319.2	UNICOM 122.8 (CTAF) Ø
---	--



CATEGORY	A	B	C	D
CIRCLING	540-1 533 (600-1)	580-1 573 (600-1)	600-1½ 593 (600-1½)	NA
BLOCK ISLAND STATE ALTIMETER SETTING MINIMUMS				
CIRCLING	600-1 593 (600-1)	640-1 633 (700-1)	660-1¾ 653 (700-1¾)	NA



FISHERS ISLAND, NEW YORK
Amdt 6B 15JUL21

41°15'N-72°02'W

ELIZABETH FLD (ØB8)
VOR or GPS-A

NE-2, 10 JUL 2025 to 07 AUG 2025