

WAAS CH 82508 W14A	APP CRS 142°	Rwy Ldg 4755 TDZE 23 Apt Elev 23
--	------------------------	---

RNAV (GPS) RWY 14

T Baro-VNAV NA when using Vero Beach altimeter setting. For uncompensated Baro-VNAV systems, LNAV/VNAV NA below -1.5°C (5°F) or above 43°C (109°F). When VGSi inop, Straight-in/Circling Rwy 14 procedure NA at night. DME/DME RNP-0.3 NA. Helicopter visibility below 1 SM NA. When local altimeter setting not received, use Vero Beach altimeter setting and increase LPV DA to 303, LNAV/VNAV DA to 378 and all MDA 40 feet; increase LNAV visibility Cats C/D ½ SM; increase Circling visibility Cat C/D ¼ SM.

MISSED APPROACH: Climb to 480 then climbing left turn to 2000 direct ANGEE and hold.

ATIS 134.825	PALM BEACH APP CON 132.8	FORT PIERCE TOWER ★ 128.2 (CTAF) 0	GND CON (GCO) 119.55
------------------------	------------------------------------	---	--------------------------------

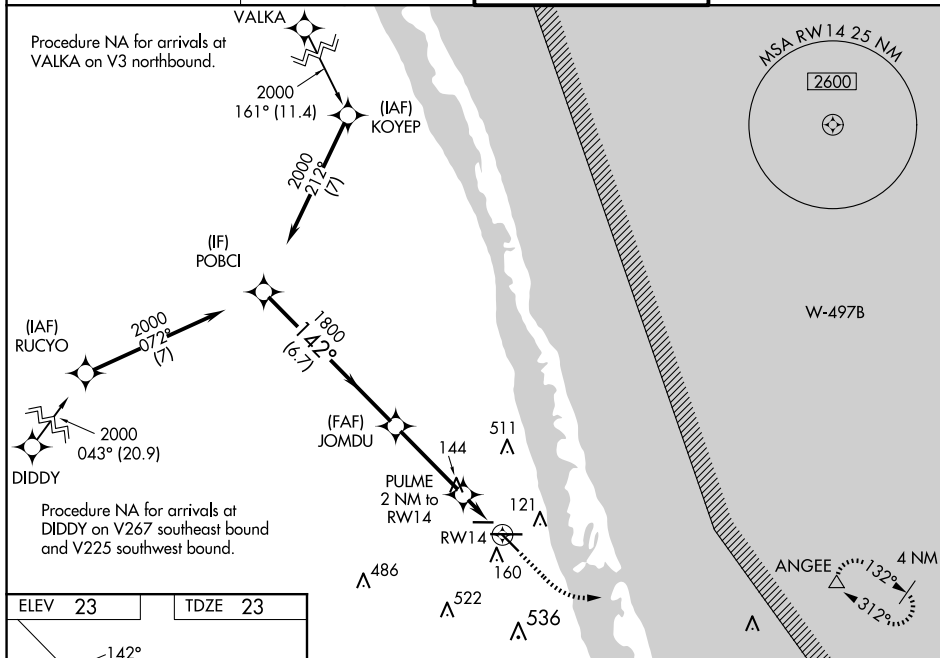


Diagram illustrating the proposed 10R and 28L Runway Configuration. The diagram shows two parallel runways, 10R and 28L, separated by a 4000-foot gap. Runway 10R is 75 feet wide and has a 142-degree angle. Runway 28L is 100 feet wide and has a 142-degree angle. The distance between the runways is 6492 feet. A 100-foot wide taxiway (TWX) is located between the runways. A 100-foot wide taxiway (TWX) is also shown. A 100-foot wide taxiway (TWX) is also shown. A 100-foot wide taxiway (TWX) is also shown.

