

WAAS CH 69529 W10A	APP CRS 097°	Rwy Ldg 6492 TDZE 23 Apt Elev 23
--	------------------------	---

RNAV (GPS) RWY 10R
TREASURE COAST INTL (FPR)

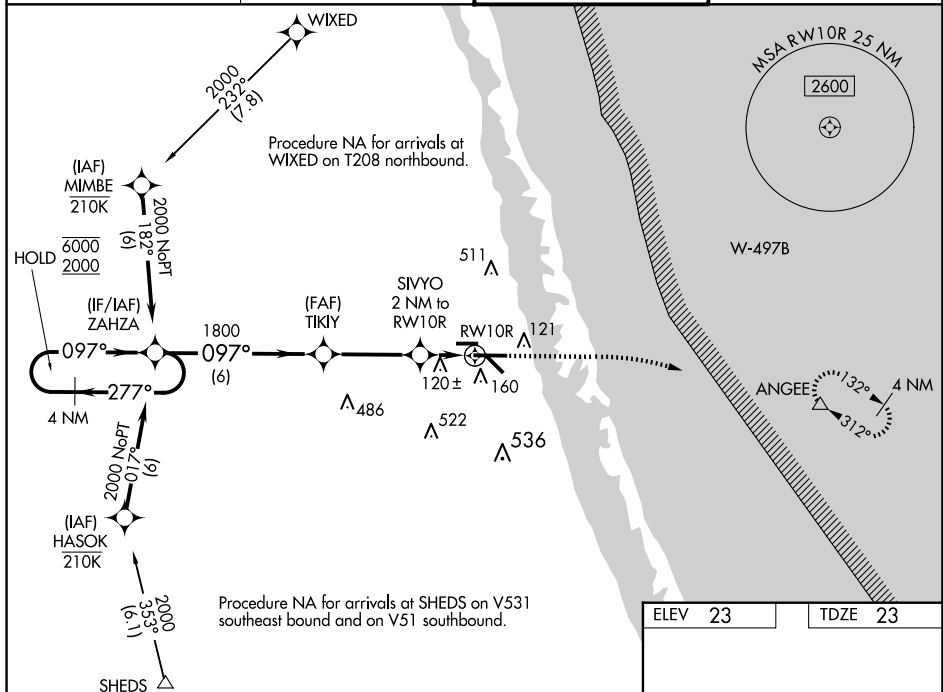
RNP APCH-GPS.



For uncompensated Baro-VNAV systems, procedure NA below 2°C or above 54°C.

MISSED APPROACH: Climb to 480 then climbing right turn to 2000 direct ANGEE and hold.

ATIS 134.825	PALM BEACH APP CON 132.8	FORT PIERCE TOWER ★ 128.2 (CTAF) 0	GND CON (GCO) 119.55
------------------------	------------------------------------	--	--------------------------------



<p>4 NM Holding Pattern</p> <p>6000 ← 277°</p> <p>2000 → 097°</p> <p>GP 3.00°</p> <p>TCH 49</p> <p>VGSI and RNAV glidepath not coincident (VGSI Angle 3.00/TCH 52).</p> <p>ZAHZA</p> <p>TIKIY</p> <p>SIVYO</p> <p>2 NM to RW10R</p> <p>1 NM to RW10R</p> <p>RW10R</p> <p>480</p> <p>2000</p> <p>ANGLE</p> <p>△</p> <p>097°</p> <p>1800</p> <p>700</p> <p>6 NM</p> <p>3.5 NM</p> <p>1 NM</p> <p>1 NM</p>				
CATEGORY	A	B	C	D
LPV DA		273- ³ / ₄	250 (300- ³ / ₄)	
RNAV/ VNAV DA		297- ⁷ / ₈	274 (300- ⁷ / ₈)	
RNAV MDA		380-1	357 (400-1)	
CIRCLING	460-1	480-1	880-2 ¹ / ₂	880-2 ³ / ₄
	437 (500-1)	457 (500-1)	857 (900-2 ¹ / ₂)	857 (900-2 ³ / ₄)

