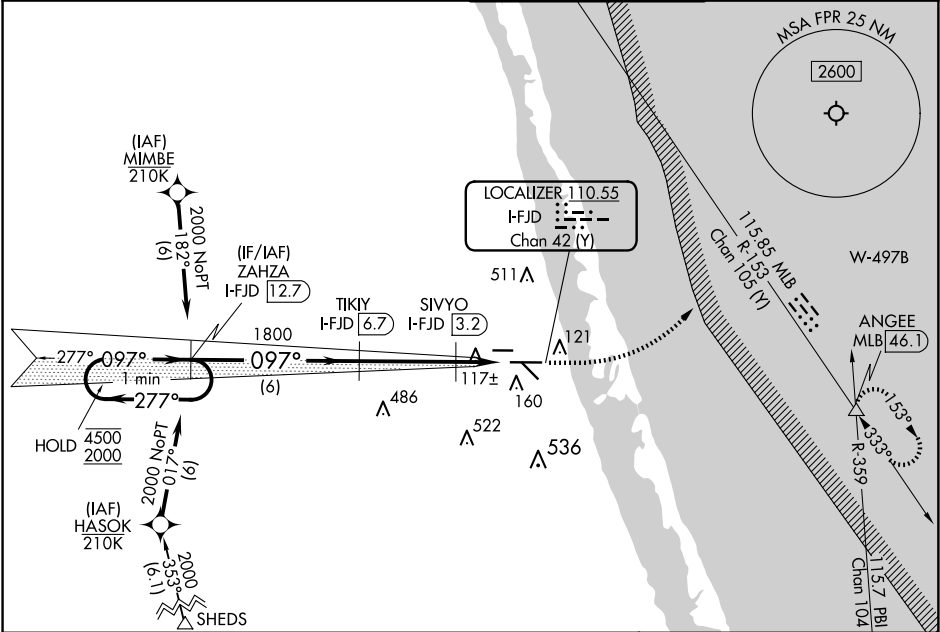


LOC/DME I-FJD	APP CRS	Rwy Ldg	6492
110.55	097°	TDZE	23
Chan 42 (Y)		Apt Elev	23

ILS or LOC RWY 10R
TREASURE COAST INTL (FPR)

RNAV 1 - GPS required.	MISSED APPROACH: Climb to 1000 then climbing left turn to 2000 on heading 085° and on MLB VOR/DME R-153 to ANGEE/MLB VOR/DME 46.1 DME and hold.
DME required.	
Autopilot coupled approach NA below 720 MSL.	

ATIS 134.825	PALM BEACH APP CON 132.8	FORT PIERCE TOWER ★ 128.2 (CTAF) 0	GND CON (GCO) 119.55
-----------------	-----------------------------	---------------------------------------	-------------------------



VGSI and ILS glidepath not coincident (VGSI Angle 3.00/TCH 52).				1000	2000	MLB R-153	ANGEE △	ELEV 23	TDZE 23
One Minute Holding Pattern				↑	hdg 085°				
ZAHZA I-FJD 12.7				TIKIY I-FJD 6.7	SIVYO I-FJD 3.2				
4500 ← 277° 2000 → 097°				1800	560				
GS 3.00° TCH 49									
6 NM				3.4 NM	1 NM	1 NM			
CATEGORY	A	B	C	D					
S-ILS 10R	273-¾		250 (300-¾)						
S-LOC 10R	560-1	537 (600-1)	560-1½		537 (600-1½)				
CIRCLING	560-1	537 (600-1)	880-2½ 857 (900-2½)		880-2¾ 857 (900-2¾)				
SIVYO FIX MINIMUMS (DME REQUIRED)									
S-LOC 10R	380-1		357 (400-1)						
CIRCLING	460-1 437 (500-1)	480-1 457 (500-1)	880-2½ 857 (900-2½)		880-2¾ 857 (900-2¾)				
REIL Rwy 10R and 28L MRL all Rwy 1									
FAF to MAP 5.4 NM									
Knots				60	90	120	150	180	
Min:Sec				5:24	3:36	2:42	2:10	1:48	