

WAAS CH 82304 W34A	APP CRS 349°	Rwy Idg 4797 TDZE 1319 Apt Elev 1319
--	------------------------	---

RNAV (GPS) RWY 34

ESTHERVILLE MUNI (EST)

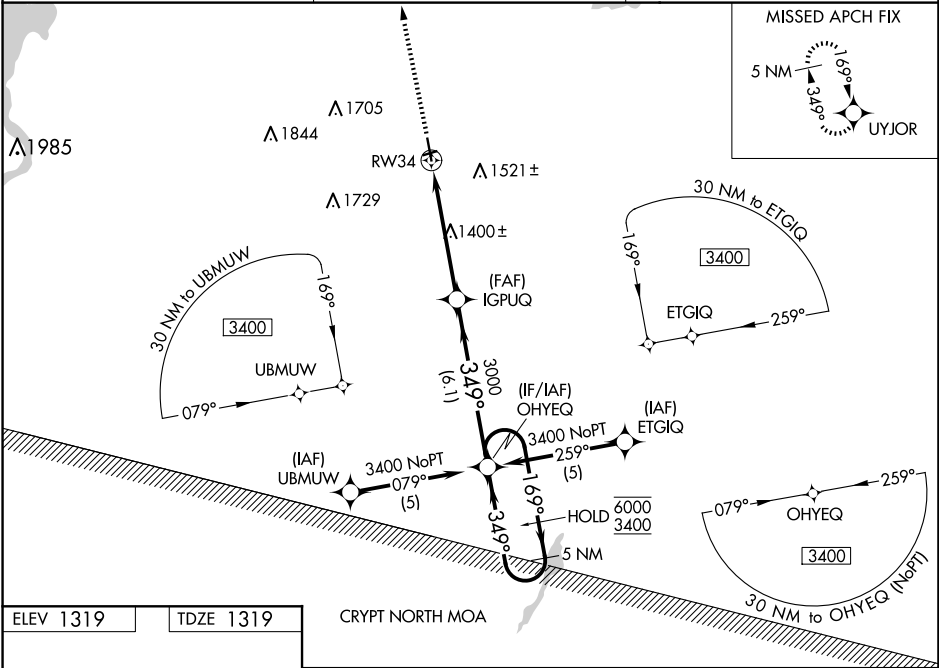
RNP APCH.

⚠

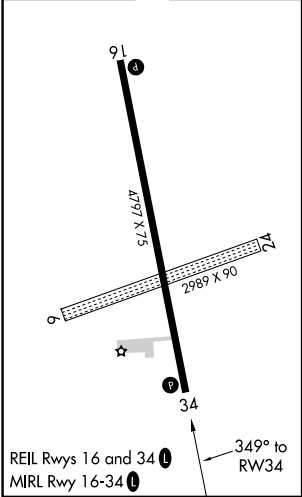
Circling NA to Rwy 6 and 24. Baro-VNAV and VDP NA when using Jackson altimeter setting. For uncompensated Baro-VNAV systems, LNAV/VNAV NA below -17°C or above 54°C. When local altimeter not received, use Jackson altimeter setting and increase all DA/MDA 60 feet.

MISSED APPROACH: Climb to 3400 direct UYJOR and hold.

ASOS 121.425	MINNEAPOLIS CENTER 127.75 257.7	UNICOM 122.975 (CTAF) 0
------------------------	---	--



ELEV 1319	TDZE 1319
-----------	-----------



3400

UYJOR

VGSI and RNAV glidepath not coincident (VGSI Angle 3.00/TCH 39).

*LNAV only

IGPUQ

3000

349°

6000

3400

GP 3.00°

TCH 42

OHYEQ

5 NM Holding Pattern

169°

349°

3400	UYJOR	1.1 NM	4 NM	6.1 NM
RW34				

CATEGORY	A	B	C	D
LPV DA	1569-1	250 (300-1)	NA	
LNAV/VNAV DA	1629-1	310 (400-1)	NA	
LNAV MDA	1700-1	381 (400-1)	NA	
CIRCLING	1720-1 401 (500-1)	1840-1 521 (600-1)	NA	