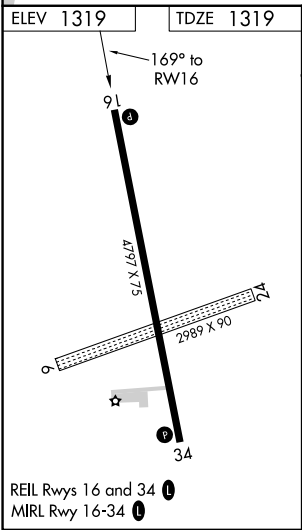
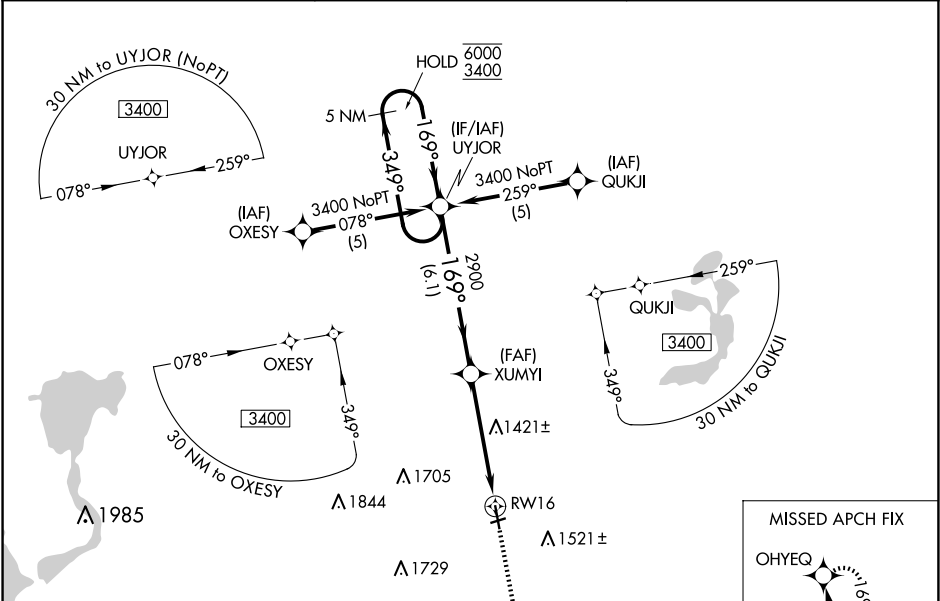


WAAS CH <b>40104</b> <b>W16A</b>	APP CRS <b>169°</b>	Rwy Idg <b>4797</b> TDZE <b>1319</b> Apt Elev <b>1319</b>
--	------------------------	---

RNAV (GPS) RWY 16

ESTHERVILLE MUNI (EST)

RNP APCH.		
<div><div>⚠</div><div>Circling NA to Rwy 6 and 24. Baro-VNAV and VDP NA when using Jackson altimeter setting. For uncompensated Baro-VNAV systems, LNAV/VNAV NA below -17°C or above 54°C. When local altimeter setting not received, use Jackson altimeter setting and increase all DA/MDA 60 feet.</div></div>		MISSED APPROACH: Climb to 3400 direct OHYEQ and hold.
ASOS <b>121.425</b>	MINNEAPOLIS CENTER <b>127.75 257.7</b>	UNICOM <b>122.975 (CTAF) 0</b>



5 NM Holding Pattern		VGSi and RNAV glidepath not coincident (VGSi Angle 3.00/TCH 39).		3400	OHYEQ
6000 ← 349°		UYJOR		↑	✧
3400 → 169°		XUMYI		* LNAV only	
GP 3.00°		2900		* 1.1 NM to RWY 16	
TCH 30		2900		RWY 16	
		6.1 NM		3.7 NM	
				1.1 NM	
CATEGORY	A	B	C	D	
LPV DA	1 569-1	250 (300-1)	NA		
LNAV/VNAV DA	1 608-1	289 (300-1)	NA		
LNAV MDA	1 720-1	401 (500-1)	NA		
CIRCLING	1 720-1	1 840-1	NA		
	401 (500-1)	521 (600-1)			