

APP CRS	Rwy Idg	5002
171°	TDZE	1484
	Apt Elev	1488

RNAV (GPS) RWY 17

STORM LAKE MUNI (SLB)

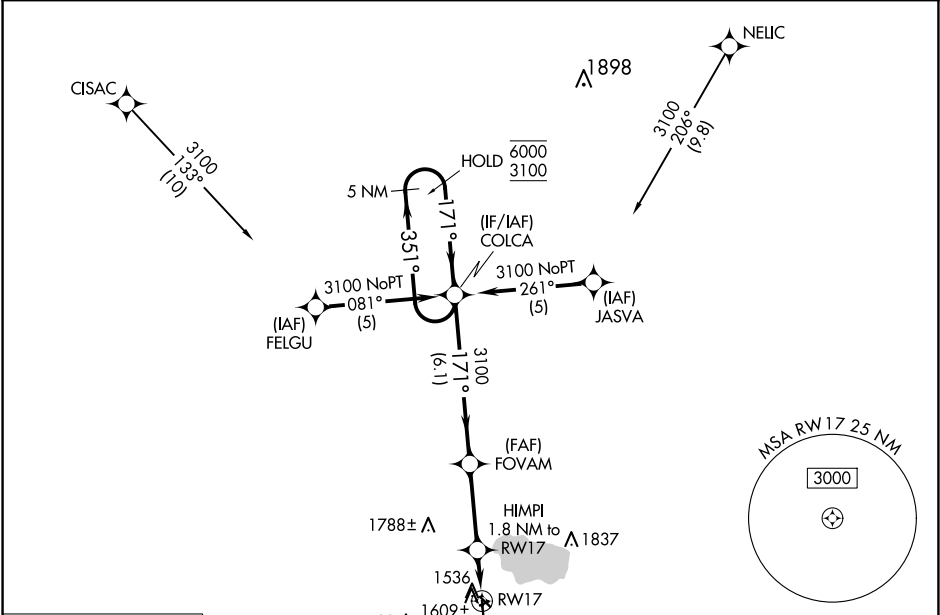
RNP APCH - GPS.

⚠

Circling NA to Rwys 6 and 24. Rwy 17 helicopter visibility reduction below 1 SM NA. Straight-in Rwy 17 NA at night, Circling Rwy 13, 17 NA at night.

MISSED APPROACH: Climb to 3100 direct REBPE and hold.

AWOS-3 118.525	MINNEAPOLIS CENTER 134.0 288.3	UNICOM 122.7 (CTAF) ①
-------------------	-----------------------------------	--------------------------



MISSED APCH FIX

REBPE

171°

351°

5 NM

ELEV 1488

TDZE 1484

171°

13

21

0.9%

0.4%

0.4%

1962 X 95

5002 X 75

35

REIL Rwys 17 and 35 ①

MIRL Rwys 13-31 and 17-35 ①

5 NM Holding Pattern		COLCA	FOVAM	3100	REBPE
6000 ← 351°		171° →	3100	3100	
3100		171°	3.05° TCH 30	HIMPI 1.8 NM to RWY 17	RWY 17
		6.1 NM	3.1 NM	1.8 NM	
CATEGORY	A	B	C	D	
RNAV MDA	1860-1	376 (400-1)	NA		
CIRCLING	1920-1 432 (500-1)	1940-1 452 (500-1)	NA		

NC-3, 10 JUL 2025 to 07 AUG 2025

NC-3, 10 JUL 2025 to 07 AUG 2025