

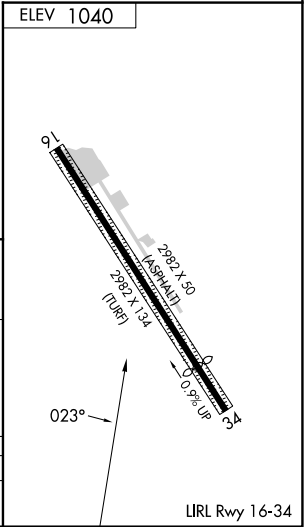
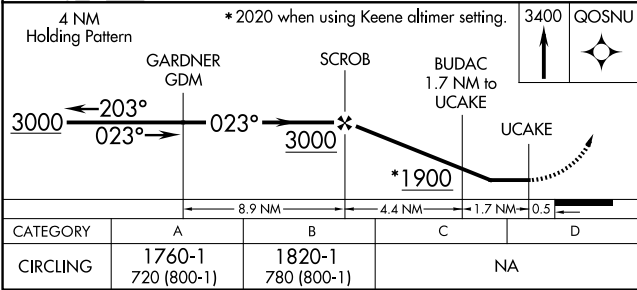
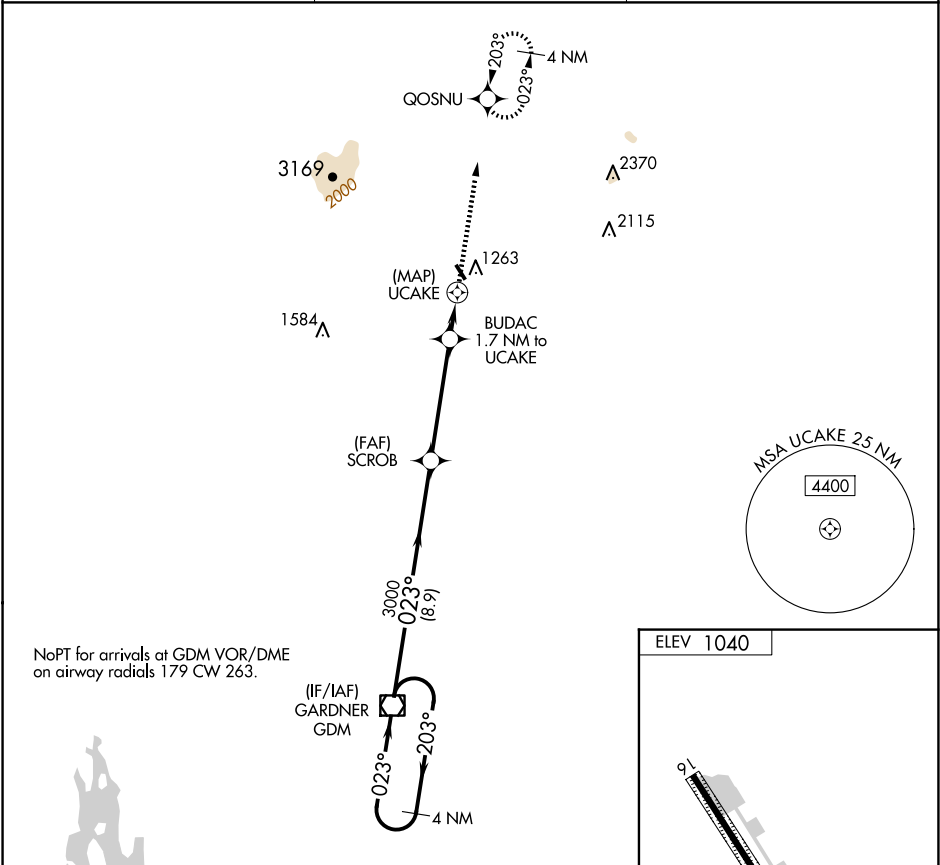
APP CRS	Rwy Idg	N/A
023°	TDZE	N/A
	Apt Elev	1040

RNAV (GPS)-B

JAFFREY AIRFIELD SILVER RANCH (A.F.N)

RNP APCH-GPS.	MISSED APPROACH: Climb to 3400 direct QOSNU and hold.
▼ When local altimeter setting not received, use Keene altimeter setting and increase all MDA 120 feet and all Cats visibility ¼ mile. Procedure NA at night. ▲ Rwy 16 and 34 helicopter visibility reduction below 1 SM NA.	

ASOS 135.875	BOSTON CENTER 123.75 338.2	UNICOM 122.8 (CTAF)
-----------------	-------------------------------	------------------------



NE-1, 10 JUL 2025 to 07 AUG 2025

NE-1, 10 JUL 2025 to 07 AUG 2025