

WAAS
CH **82438**
W30A

APP CRS
305°

Rwy Idg **4000**
TDZE **1121**
Apt Elev **1125**

RNAV (GPS) RWY 30

NORTHEAST IOWA RGNL (CCY)

⚠

⚠

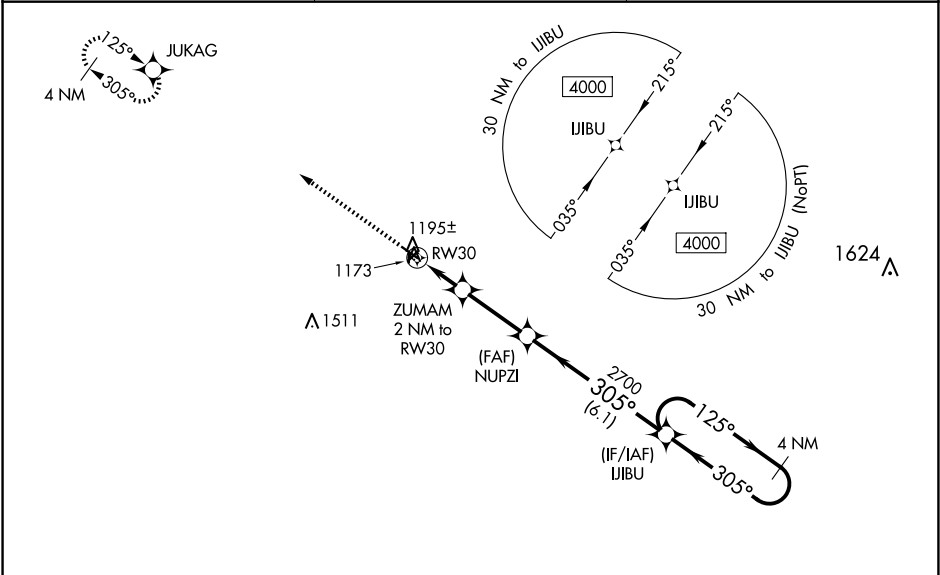
For uncompensated Baro-VNAV systems, LNAV/VNAV NA below -17°C (2°F) or above 54°C (130°F). DME/DME RNP-0.3 NA. Helicopter visibility reduction below ¾ SM NA. When local altimeter setting not received, use Waterloo altimeter setting and increase all DA 110 feet and visibility ¼ mile. Increase all MDA 120 feet, increase LNAV Cat C visibility ¾ mile, and Circling visibility Cat C ½ mile. VDP and Baro-VNAV NA when using Waterloo altimeter setting. Circling Rwy 4-22 and 18-36 NA.

MISSED APPROACH: Climb to 4000 direct JUKAG and hold, continue climb-in-hold to 4000.

AWOS-3
125.525

WATERLOO APP CON ★
118.9 251.15

UNICOM
122.8 (CTAF) ①



ELEV 1125

TDZE 1121

4000

JUKAG

VGSI and RNAV glidepath not coincident (VGSI Angle 3.00/TCH 27).

4 NM Holding Pattern

* LNAV only

ZUMAM 2 NM to RW30

NUPZI 2700

IJIBU

125° → 4000

← 305°

GP 3.00° TCH 40

1 NM

1 NM

2.9 NM

6.1 NM

CATEGORY	A	B	C	D
LPV DA	1371-1	250 (300-1)		NA
LNAV/VNAV DA	1371-1	250 (300-1)		NA
LNAV MDA	1460-1	339 (400-1)		NA
CIRCLING	1520-1 395 (400-1)	1580-1 455 (500-1)	1760-1¾ 635 (700-1¾)	NA