

WAAS CH 58038 W12A	APP CRS 125°	Rwy Idg 4000 TDZE 1121 Apt Elev 1125
--	------------------------	---

RNAV (GPS) RWY 12

NORTHEAST IOWA RGNL (CCY)

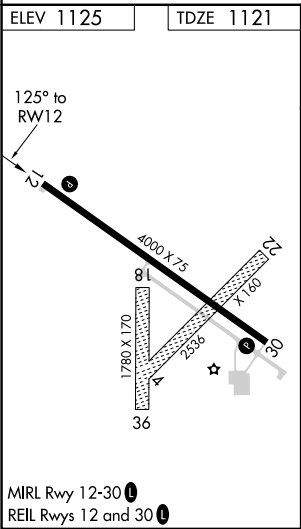
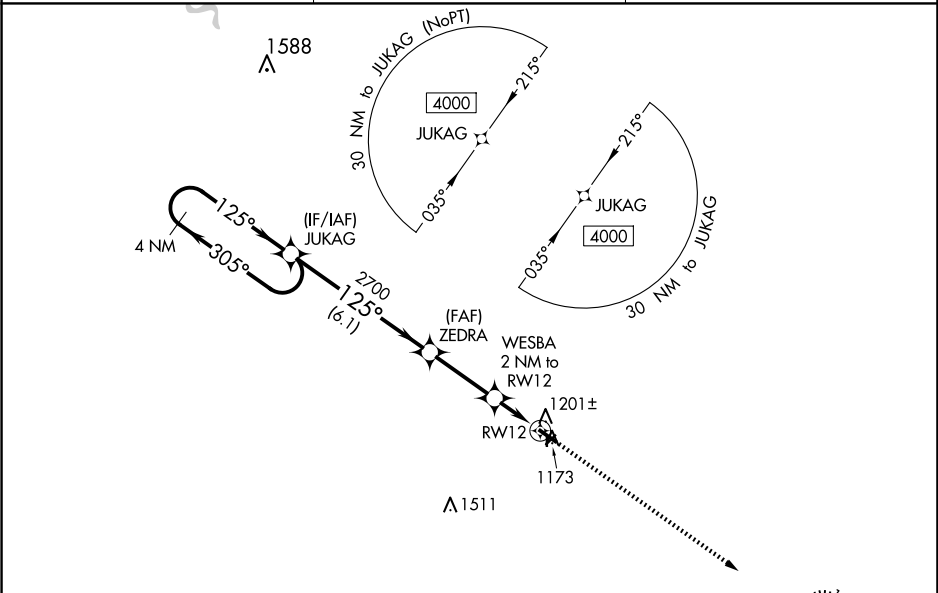
▼

▲

For uncompensated Baro-VNAV systems, LNAV/VNAV NA below -17°C (2°F) or above 54°C (130°F). DME/DME RNP-0.3 NA. When local altimeter setting not received, use Waterloo altimeter setting and increase all DA 110 feet and visibilities ¼ mile. Increase all MDA 120 feet and increase LNAV Cat C visibility ⅜ mile, and Circling visibility Cat C ½ mile. VDP and Baro-VNAV NA when using Waterloo altimeter setting. Circling Rwy 4-22 and 18-36 NA.

MISSED APPROACH: Climb to 4000 direct IJBU and hold, continue climb-in-hold to 4000.

AWOS-3 125.525	WATERLOO APP CON ★ 118.9 251.15	UNICOM 122.8 (CTAF) 0
--------------------------	---	--



4 NM Holding Pattern				VGSI and RNAV glidepath not coincident (VGSI Angle 3.00/TCH 26).				4000		IJBU	
								↑		✦	
										*LNAV only	
4000 ← 305° 125° →				125°				2700		WESBA 2 NM to RW12	
GP 3.00° TCH 40								*1780		*1 NM to RW12	
				6.1 NM				2.9 NM		1 NM	
										RW12	
CATEGORY		A		B		C		D			
LPV DA		1371-1		250 (300-1)				NA			
LNAV/VNAV DA		1371-1		250 (300-1)				NA			
LNAV MDA		1460-1		339 (400-1)				NA			
CIRCLING		1520-1 395 (400-1)		1580-1 455 (500-1)		1760-1¾ 635 (700-1¾)		NA			