

WAAS
CH **78035**
W16B

APP CRS
161°

Rwy Ldg
TDZE **186**
Apt Elev **192**

RNAV (GPS) RWY 16R

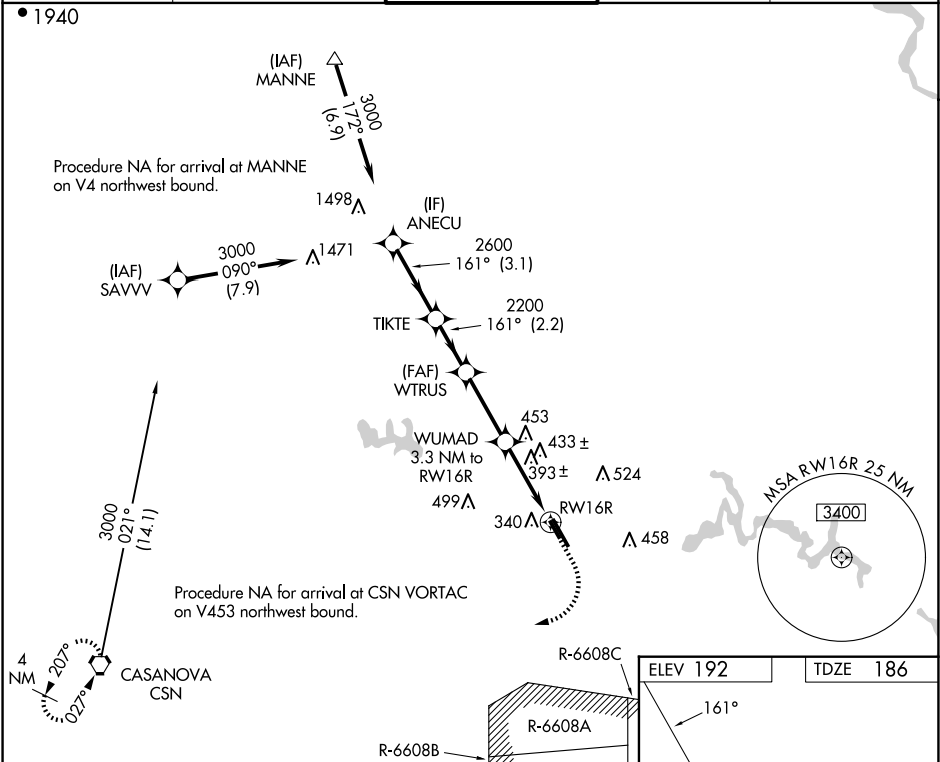
MANASSAS RGNL/HARRY P DAVIS FLD (HEF)

RNP APCH - GPS.

▼ Rwy 16R helicopter visibility reduction below ¾ SM NA. For uncompensated Baro-VNAV systems, LNAV/VNAV NA below -15°C or above 54°C.

MISSED APPROACH: Climb to 700 then climbing right turn to 3000 direct CSN VORTAC and hold.

ATIS	POTOMAC APP CON	MANASSAS TOWER ★	GND CON	CLNC DEL
125.175	128.525 306.925	133.1 (CTAF) 0 360.75	121.8	120.2



ANECU		TIKTE		WTRUS		WUMAD	
3000		2600		2200		1280	
GP 3.00°		TCH 53					
← 3.1 NM		← 2.2 NM		← 2.9 NM		← 2 NM	
CATEGORY		A		B		C	
LPV DA		494-7/8		308 (400-7/8)			
LNAV/VNAV DA		675-1 3/8		489 (500-1 3/8)			
LNAV MDA		660-1		474 (500-1)		660-1 3/8	
CIRCLING		720-1		740-1		840-1 3/4	
		528 (600-1)		548 (600-1)		648 (700-1 3/4)	
						880-2 1/4	
						688 (700-2 1/4)	

ELEV 192

TDZE 186

161°

3000

1.3 NM to RWY 16R

TWR

CSN

R-6608C, R-6608B, R-6608A

CASANOVA CSN