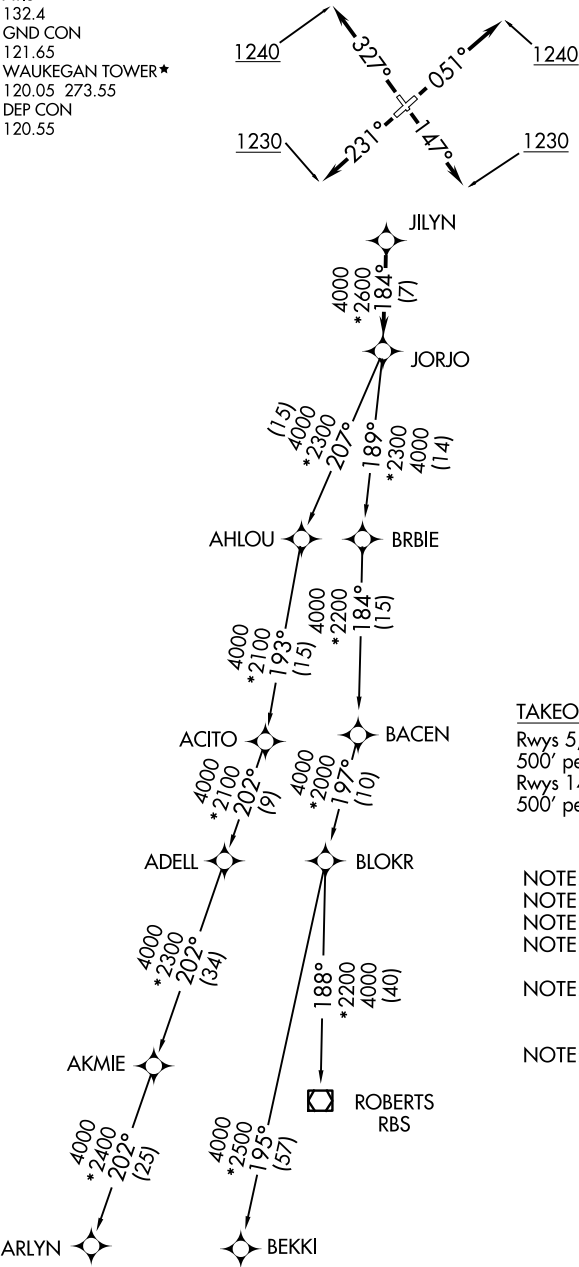


ATIS
132.4
GND CON
121.65
WAUKEGAN TOWER*
120.05 273.55
DEP CON
120.55

TOP ALTITUDE:
3000



TAKEOFF MINIMUMS
Rwys 5, 32: Standard with minimum climb of 500' per NM to 1240.
Rwys 14, 23: Standard with minimum climb of 500' per NM to 1230.

NOTE: RNAV 1.
NOTE: RADAR required.
NOTE: DME/DME/IRU or GPS required.
NOTE: TURBOJET departures maintain 250K until advised by ATC.
NOTE: AKMIE transition: for aircraft inbound to BML, SPI, or PIA, or as assigned by ATC.
NOTE: ROBERTS transition: for aircraft inbound to CMI or STL, or as assigned by ATC.

(NARRATIVE ON FOLLOWING PAGE)

NOTE: Chart not to scale.

EC-3, 10 JUL 2025 to 07 AUG 2025

EC-3, 10 JUL 2025 to 07 AUG 2025