

LOC I-UGN	APP CRS	Rwy Idg	6001
110.7	231°	TDZE	723
		Apt Elev	727

ILS or LOC RWY 23

WAUKEGAN NTL (UGN)

⚠

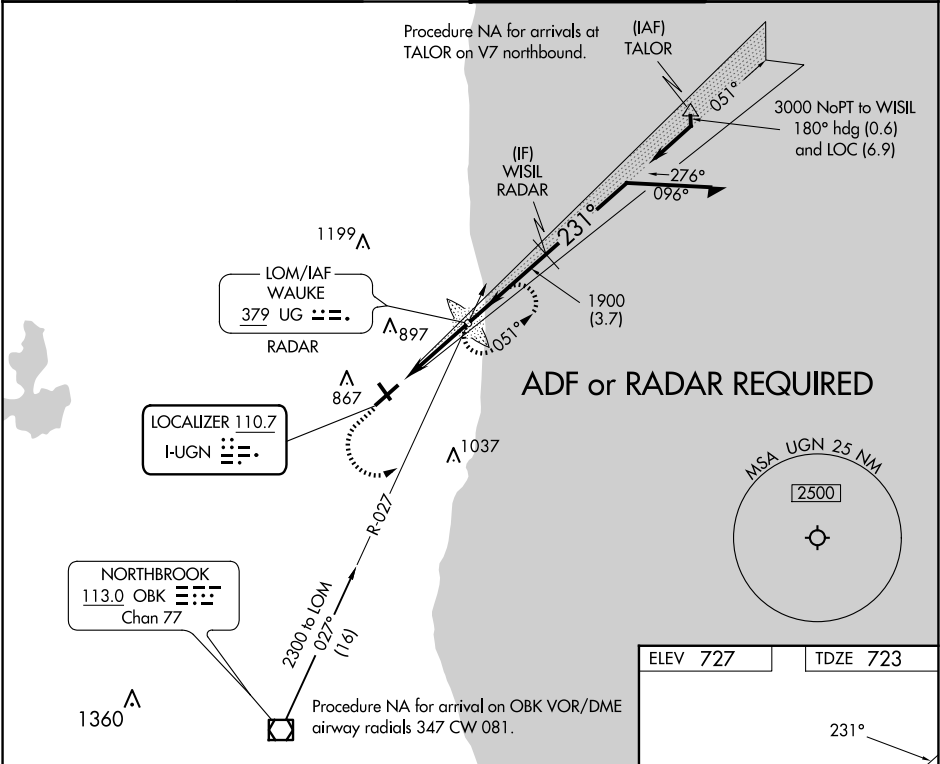
⚠

Circling to Rwy 14, 32 NA at night.  
ADF or RADAR required.

MAISR

MISSED APPROACH: Climb to 1600 then climbing left turn to 2300 to intercept OBK VOR/DME R-027 to WAUKE LOM/RADAR and hold.

ATIS 132.4	CHICAGO APP CON 120.55	WAUKEGAN TOWER ★ 120.05 (CTAF) 273.55	GND CON 121.65
---------------	---------------------------	--	-------------------



1600

2300

OBK R-027

UG

VGSI and ILS glidepath not coincident (VGSI Angle 3.00/TCH 52).

WAUKE LOM/RADAR

Remain within 10 NM

1868

051°

231°

2300

1900

GS 3.00° TCH 53

3.4 NM

CATEGORY	A	B	C	D
S-ILS 23		923-1/2	200 (200-1/2)	
S-LOC 23		1040-1/2	317 (400-1/2)	
CIRCLING	1220-1	493 (500-1)	1220-1 1/2 493 (500-1 1/2)	1400-2 1/4 673 (700-2 1/4)

ELEV 727

TDZE 723

REIL Rwy 5

HIRL Rwy 5-23

MIRL Rwy 14-32

FAF to MAP 3.4 NM

Knots	60	90	120	150	180
Min:Sec	3:24	2:16	1:42	1:21	1:08