

WAAS
CH **40235**
W28A

APP CRS
276°

Rwy Idg
TDZE
Apt Elev

3181
308
308

RNAV (GPS) RWY 28

HERITAGE FLD (PTW)

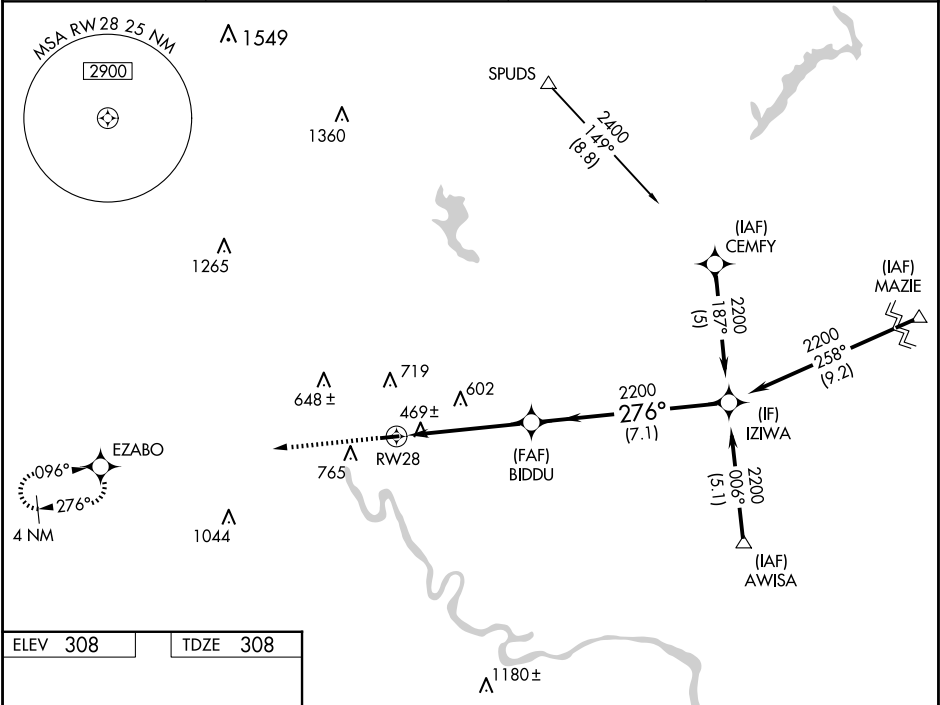
⚠

Circling NA south of Rwy 10-28. DME/DME RNP-0.3 NA. VDP and Baro-VNAV NA when using Wings Fld altimeter setting. When local altimeter setting not received, use Wings Fld altimeter setting and increase all DA 35 feet and all MDA 40 feet, increase LPV all Cats visibilities 1/8 mile. Helicopter visibility reduction below 3/4 SM NA. For uncompensated Baro-VNAV systems, LNAV/VNAV NA below -15°C (5°F) or above 54°C (130°F).

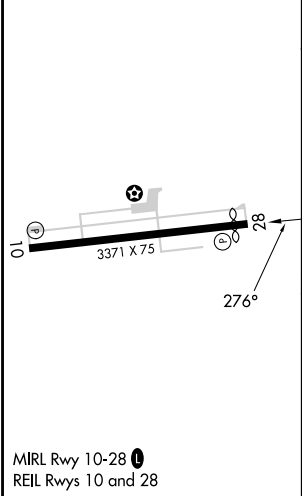
MISSED APPROACH:

Climb to 2600 direct EZABO and hold.

ASOS 119.425	PHILADELPHIA APP CON 126.85 263.125	CLNC DEL 118.55	UNICOM 122.7 (CTAF) 0
------------------------	---	---------------------------	---------------------------------



ELEV 308	TDZE 308
----------	----------



2600	EZABO	VGSI and RNAV glidepath not coincident (VGSI Angle 3.00/TCH 45).		
*LNAV only		*1.4 NM to RW28	BIDDU 2200	IZIWA 2200
RW28		1.4 NM	3.5 NM	7.1 NM
GP 3.55° TCH 60				
CATEGORY	A	B	C	D
LPV DA	652-1	344 (400-1)	NA	
LNAV/VNAV DA	779-1 3/8	471 (500-1 3/8)	NA	
LNAV MDA	820-1	512 (600-1)	NA	
CIRCLING	940-1	632 (700-1)	NA	