

WAAS CH <b>97644</b> <b>W32A</b>	APP CRS <b>319°</b>	Rwy Ldg TDZE Apt Elev	<b>3263</b> <b>121</b> <b>123</b>
--	------------------------	-----------------------------	---

RNAV (GPS) RWY 32

MANSFIELD MUNI (1B9)

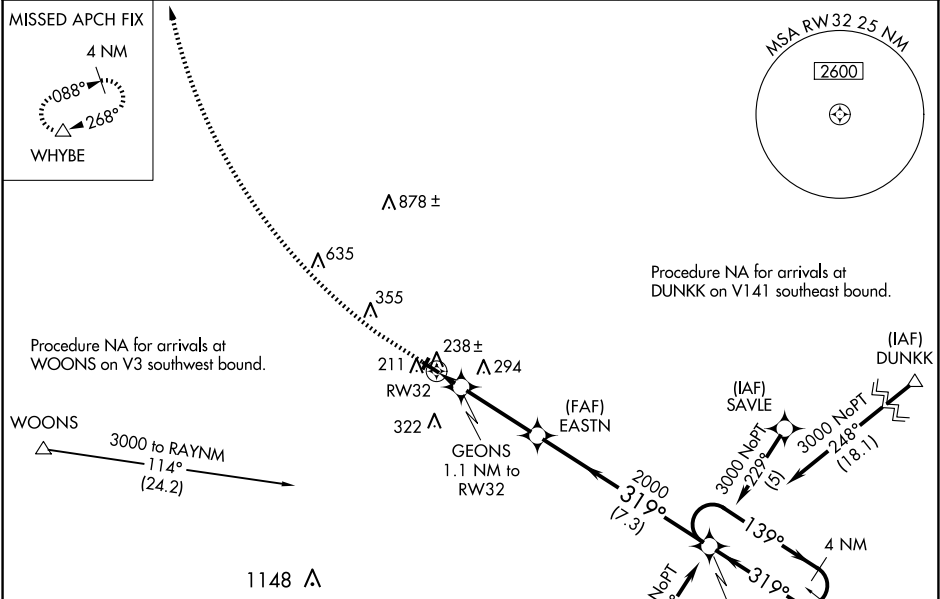
RNP APCH - GPS.

⚠

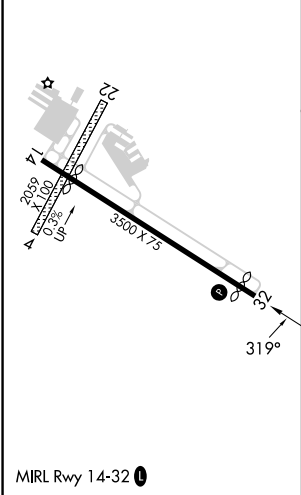
Circling NA to Rwy 4 and 22. For uncompensated Baro-VNAV systems, LNAV/VNAV NA below -15°C or above 54°C. Baro-VNAV NA when using OWD altimeter setting. Procedure NA at night. When local altimeter setting not received, use OWD altimeter setting: increase LPV DA to 432 feet, LNAV/VNAV DA to 427 feet, and all MDAs 40 feet.

MISSED APPROACH: Climb to 700 then climbing right turn to 3000 direct WHYBE and hold.

AWOS-3PT <b>118.675</b>	BOSTON APP CON <b>124.1</b>	UNICOM <b>123.0</b> (CTAF) <b>0</b>
----------------------------	--------------------------------	--



ELEV 123	TDZE 121
----------	----------



700

3000

WHYBE

△

GEONS 1.1 NM to RW32

2000

319°

620

1.1 NM

3.3 NM

7.3 NM

RAYNM

139°

319°

6000

3000

GP 4.00° TCH 55

CATEGORY	A	B	C	D
LPV DA	395-7/8	274 (300-7/8)		NA
LNAV/VNAV DA	390-7/8	269 (300-7/8)		NA
LNAV MDA	500-1	379 (400-1)		NA
<b>CIRCLING</b>	600-1	477 (500-1)		NA

NE-1, 10 JUL 2025 to 07 AUG 2025

NE-1, 10 JUL 2025 to 07 AUG 2025