

WAAS CH 78232 W19A	APP CRS 190°	Rwy Idg TDZE Apt Elev	5010 979 979
--	------------------------	-----------------------------	---

RNAV (GPS) RWY 19

BARABOO/WISCONSIN DELLS RGNL (DLL)

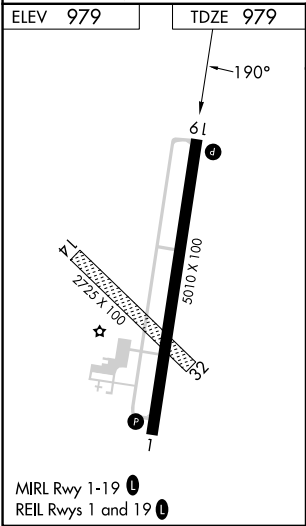
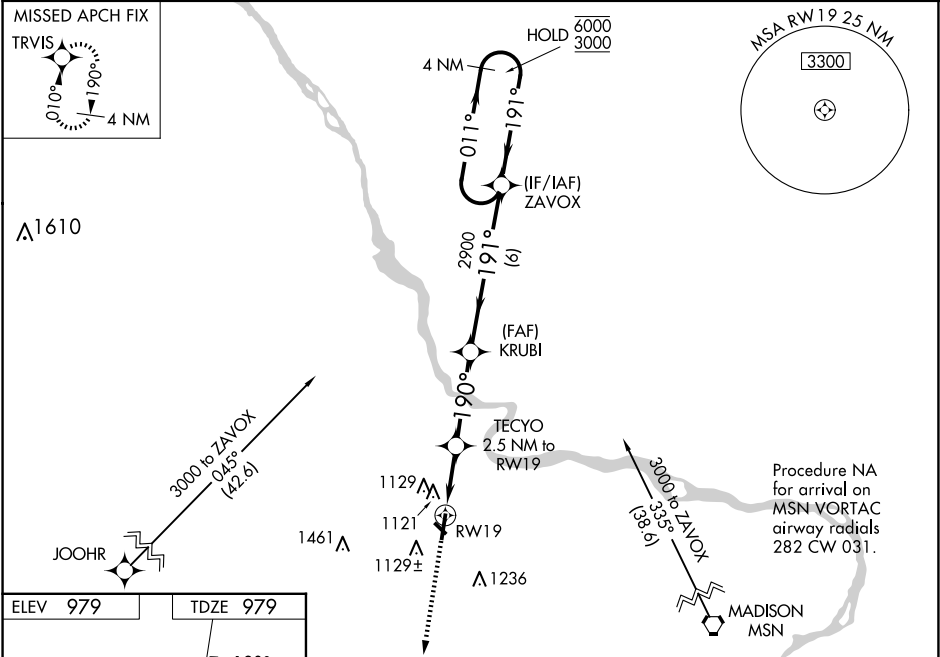
RNP APCH.

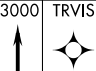
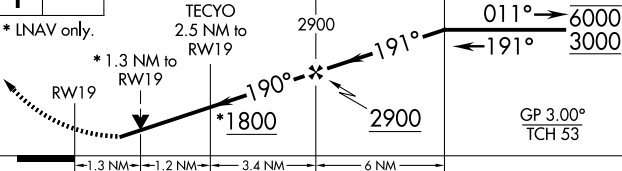

⚠

Circling NA to Rwy 14 and 32.
Rwy 19 helicopter visibility reduction below ¾ SM NA.
For uncompensated Baro-VNAV systems, LNAV/VNAV NA below -16°C or above 54°C.

MISSED APPROACH:
Climb to 3000 direct
TRVIS and hold.

AWOS-3 118.325	MADISON APP CON ★ 135.45 343.7	UNICOM 123.05 (CTAF) 0
--------------------------	--	----------------------------------



3000 TRVIS		VGSI and RNAV glidepath not coincident (VGSI Angle 3.00/TCH 32)				4 NM Holding Pattern	
							
* LNAV only.							
							
→ 1.3 NM		→ 1.2 NM		→ 3.4 NM		→ 6 NM	
CATEGORY	A		B		C		D
LPV DA	1341-1		362 (400-1)				NA
LNAV/ VNAV DA	1302-1		323 (400-1)				NA
LNAV MDA	1420-1 441 (500-1)		1420-1 $\frac{3}{8}$ 441 (500-1 $\frac{3}{8}$)				NA
 CIRCLING	1520-1 541 (600-1)		1580-1 $\frac{3}{4}$ 601 (700-1 $\frac{3}{4}$)				NA