

GATEWAY ONE DEPARTURE

(GATWY1.TWILA) 24025

AL-5316 (FAA)

ST LOUIS DOWNTOWN (CPS)
CAHOKIA/ST. LOUIS, ILLINOIS

EC-3, 10 JUL 2025 to 07 AUG 2025

TOP ALTITUDE:
ASSIGNED BY ATC

TAKEOFF MINIMUMS

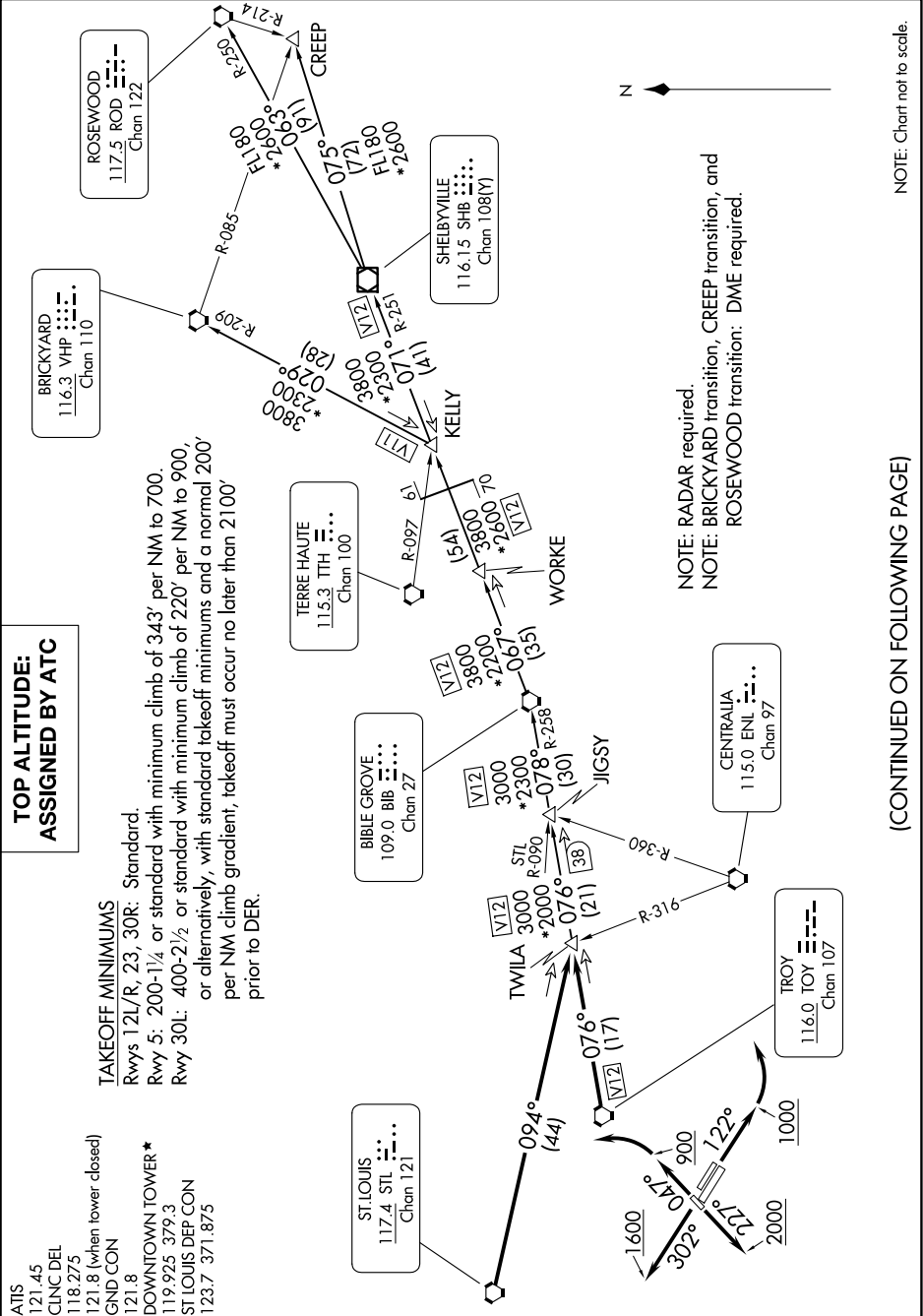
Rwys 12L/R, 23, 30R: Standard.
Rwy 5: 200-1/4 or standard with minimum climb of 343' per NM to 700.
Rwy 30L: 400-2 1/2 or standard with minimum climb of 220' per NM to 900,
or alternatively, with standard takeoff minimums and a normal 200'
per NM climb gradient, takeoff must occur no later than 2100'
prior to DER.

ATIS 121.45
CLNC DEL 118.275
GND CON 121.8 (when tower closed)
DOWNTOWN TOWER * 119.925 379.3
ST LOUIS DEP CON 123.7 371.875

GATEWAY ONE DEPARTURE

(GATWY1.TWILA) 08NOV18

CAHOKIA/ST. LOUIS, ILLINOIS
ST LOUIS DOWNTOWN (CPS)



(CONTINUED ON FOLLOWING PAGE)

EC-3, 10 JUL 2025 to 07 AUG 2025