

WAAS CH 72828 W02A	APP CRS 018°	Rwy Idg TDZE 1151 Apt Elev 1165
--	------------------------	---

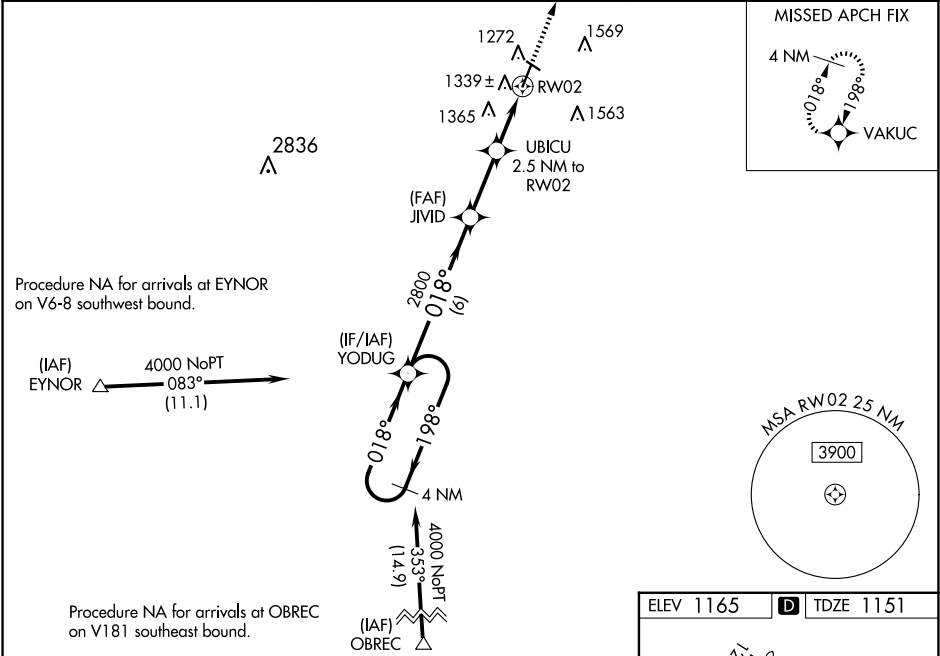
RNAV (GPS) RWY 2

ATLANTIC MUNI (AIO)

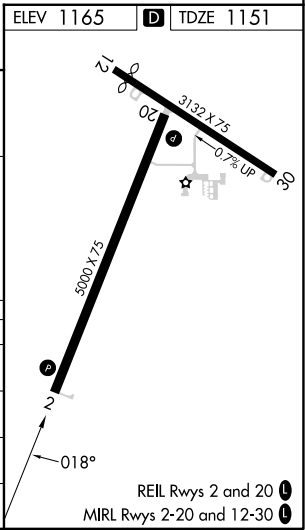
⚠ DME/DME RNP -0.3 NA. Baro-VNAV and VDP NA when using Harlan altimeter setting. For uncompensated Baro-VNAV systems, LNAV/VNAV NA below -17°C (2°F) or above 54°C (130°F). When local altimeter setting not received, use Harlan altimeter setting: increase LPV DA to 1450 feet and all visibilities ½ SM; increase LNAV/VNAV DA to 1563 feet and all visibilities ½ SM; increase all MDAs 60 feet, and LNAV visibility Cat C ½ SM and Circling visibility Cat B/C ¼ SM. Circling Rwy 12, 30 NA at night.

MISSED APPROACH:
Climb to 4000 direct
VAKUC and hold.

AWOS-3 127.825	MINNEAPOLIS CENTER 119.6 290.4	UNICOM 122.7 (CTAF)
--------------------------	--	-------------------------------



VGSI and RNAV glidepath not coincident (VGSI Angle 3.00/TCH 31).				
4000		2800	1165	VAKUC
GP 3.00° TCH 39		*1980		
4 NM Holding Pattern		2.6 NM	1.1 NM	1.4 NM
CATEGORY				
LPV DA				
LNAV/VNAV DA				
LNAV MDA				
CIRCLING				



NC-3, 10 JUL 2025 to 07 AUG 2025

NC-3, 10 JUL 2025 to 07 AUG 2025