

WAAS CH 86738 W07A	APP CRS 075°	Rwy Ldg TDZE Apt Elev 3502 8 8
--	------------------------	--

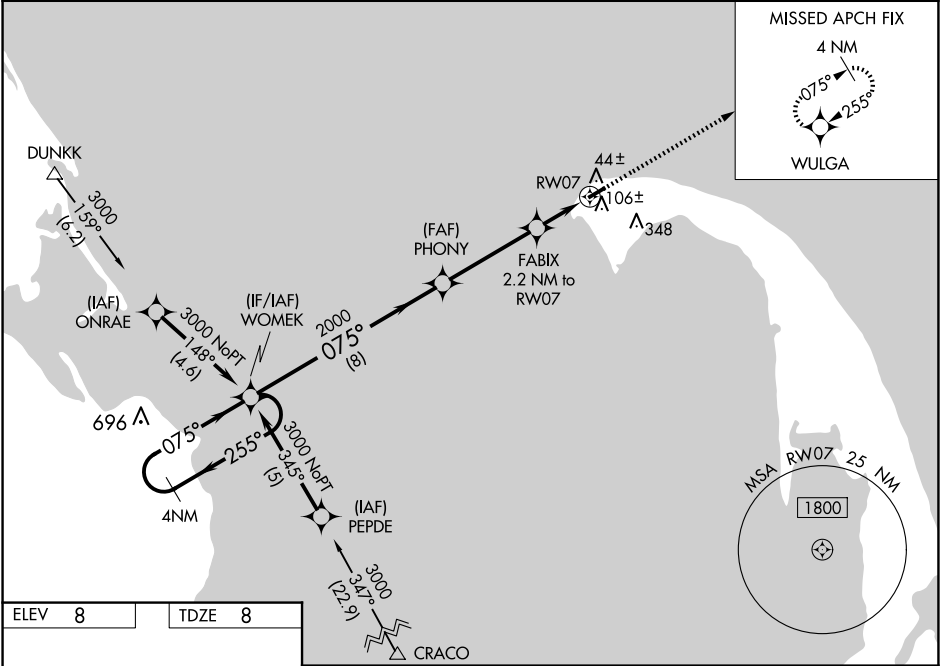
RNAV (GPS) RWY 7
PROVINCETOWN MUNI (PVC)

⚠ For uncompensated Baro-VNAV systems, LNAV/VNAV NA below -15°C (5°F) or above 54°C (130°F). DME/DME RNP-0.3 NA. Inop table does not apply to LPV Cats A and B. When local altimeter setting not received, use Hyannis altimeter setting: increase LPV DA to 271, increase LNAV/VNAV DA to 331, and Cat A/B visibility 1/8 mile and all MDA 80 feet. For inop MALSF when using Hyannis altimeter setting, increase LPV Cat A/B visibility to 7/8 mile. Baro-VNAV and VDP NA when using Hyannis altimeter setting.

MALSF

⚠ MISSED APPROACH: Climb to 3000 direct WULGA and hold.

AWOS-3PT 119.275	BOSTON APP CON 118.2	CLNC DEL 120.65	UNICOM 122.8 (CTAF)	122.85 0
----------------------------	--------------------------------	---------------------------	-------------------------------	------------------------



ELEV **8** TDZE **8**

REIL Rwy 25 **0**
HIRL Rwy 7-25 **0**

4 NM Holding Pattern

WOMEK

3000 ← 255° → 075°

GP 3.00° TCH 40

PHONY

FABIX 2.2 NM to RW07

*1 NM to RW07

*740

RW07

*LNAV only

CATEGORY	A	B	C	D
LPV DA	208-3/4	200 (200-3/4)	NA	
LNAV/VNAV DA	268-3/4	260 (300-3/4)	NA	
LNAV MDA	360-3/4	352 (400-3/4)	NA	
CIRCLING	460-1 452 (500-1)	660-1 652 (700-1)	NA	

NE-1, 10 JUL 2025 to 07 AUG 2025

NE-1, 10 JUL 2025 to 07 AUG 2025