

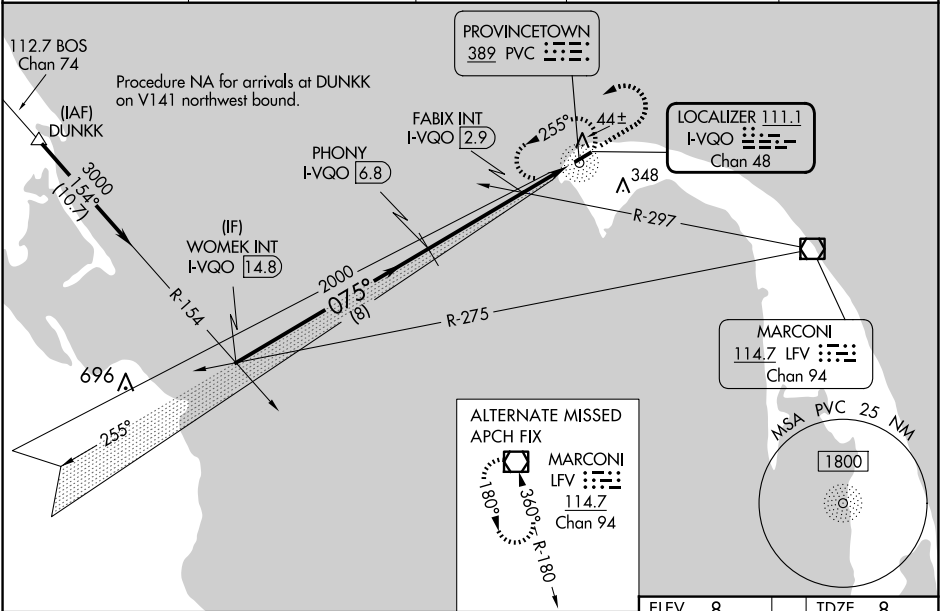
LOC/DME I-VQO	APP CRS	Rwy Ldg	3502
111.1	075°	TDZE	8
Chan 48		Apt Elev	8

ILS or LOC RWY 7

PROVINCETOWN MUNI (PVC)

DME required for LOC only, ADF.		MALSF	MISSED APPROACH: Climb to 800 then climbing left turn to 2000 direct PVC NDB and hold, continue climb-in-hold to 2000.
NA Inop table does not apply to S-ILS 7. When local altimeter setting not received, use Hyannis altimeter setting and increase all DA to 271 and all MDA 80 feet: increase S-LOC 7 and FABIX fix minimums S-LOC 7 all Cats visibility ¼ SM. VDP NA when using Hyannis altimeter setting. For inop ALS when using Hyannis altimeter setting, increase S-ILS 7 all Cats visibility to ⅔ SM.			

AWOS-3PT	BOSTON APP CON	CLNC DEL	UNICOM	
119.275	118.2	120.65	122.8 (CTAF)	122.85



WOMEK INT I-VQO 14.8		PHONY I-VQO 6.8		FABIX INT I-VQO 2.9		800	2000	PVC	ELEV 8	TDZE 8
3000		2000		2000		*I-VQO 1.5		I-VQO 0.7	*LOC only	
GS 3.00° TCH 40		# 740 using Hyannis altimeter setting.		# 660						
8 NM		3.9 NM		1.3 NM		0.9 NM				
CATEGORY	A	B		C		D				
S-ILS 7	208-¾	200 (200-¾)				NA				
S-LOC 7	660-¾	652 (700-¾)				NA				
CIRCLING	660-1	652 (700-1)				NA				
FABIX FIX MINIMUMS (DUAL VOR RECEIVERS OR DME REQUIRED)										
S-LOC 7	320-¾	312 (400-¾)				NA				
CIRCLING	460-1	660-1				NA				
	452 (500-1)	652 (700-1)								
REIL Rwy 25 1										
HIRL Rwy 7-25 1										
FAF to MAP 6.1 NM										
Knots	60	90	120	150	180					
Min:Sec	6:06	4:04	3:03	2:26	2:02					