

VORTAC FNT	APP CRS	Rwy Ldg
116.9	281°	4300
Chan 116		TDZE 736
		Apt Elev 736

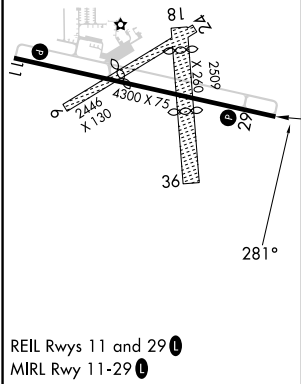
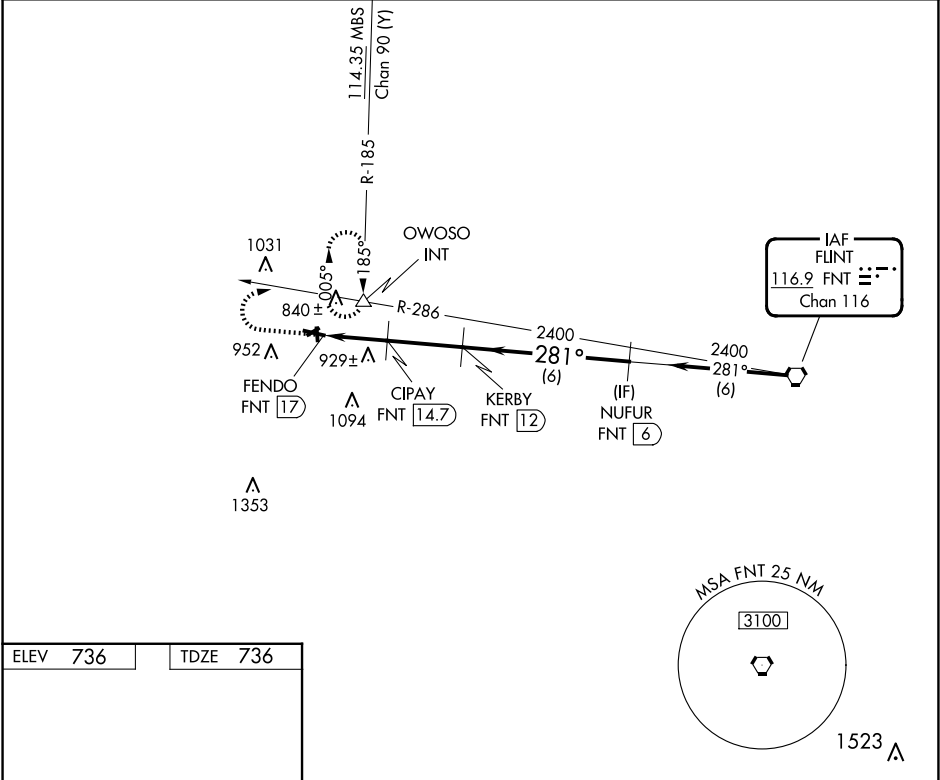
VOR/DME RWY 29

OWOSSO COMMUNITY (RNP)

▼ Circling NA to Rwy 6, 18, 24 and 36. Rwy 29 helicopter visibility reduction below ¾ SM NA. When local altimeter setting not received, use Flint altimeter setting and increase all MDA 60 feet and S-29 Cat C visibility ¼ mile.

MISSED APPROACH: Climb to 1900 then climbing right turn to 2700 via FNT VORTAC R-286 to OWOSSO INT and hold.

AWOS-3	GREAT LAKES APP CON ★	UNICOM
118.025	128.55 257.9	123.0 (CTAF) 0



1900	2700	OWOSSO	VGSI and descent angles not coincident (VGSI Angle 4.00/TCH 20).	
↑	FNT R-286	△	KERBY FNT 12	NUFUR FNT 6
1500		3.07°	2400	281°
FENDO FNT 17		CIPAY FNT 14.7	2400	Procedure Turn NA
2.3 NM		2.7 NM	6 NM	
CATEGORY	A	B	C	D
S-29	1180-1	444 (500-1)	1180-1¼ 444 (500-1¼)	NA
CIRCLING	1220-1 483 (500-1)	1260-1 523 (600-1)	1400-1¾ 663 (700-1¾)	NA

EC-1, 10 JUL 2025 to 07 AUG 2025

EC-1, 10 JUL 2025 to 07 AUG 2025