

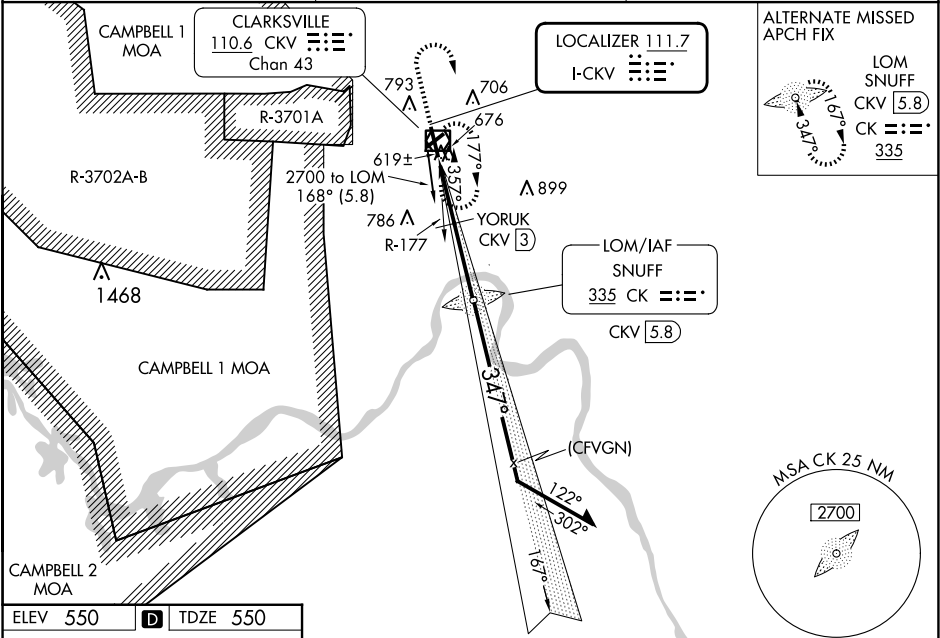
LOC I-CKV <b>111.7</b>	APP CRS <b>347°</b>	Rwy Ldg TDZE Apt Elev	<b>5999</b> <b>550</b> <b>550</b>
---------------------------	------------------------	-----------------------------	---

LOC RWY 35

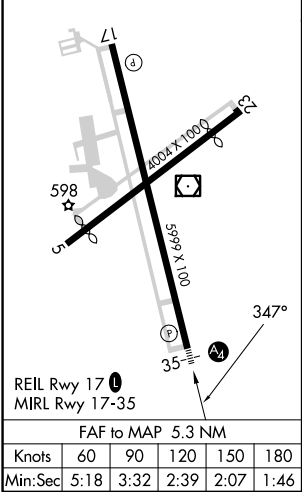
OUTLAW FLD (CKV)

ADF required. RADAR required.	MALS	MISSED APPROACH: Climb to 1800 then climbing right turn to 2200 direct CKV VOR/DME and hold.
NA Rwy 35 helicopter visibility reduction below ¾ SM NA. Circling Rwy 17, 23 NA at night. When local altimeter setting not received, use HOP altimeter setting. Circling NA west of Rwy 17-35. *DME from CKV VOR/DME.		

ASOS <b>134.575</b>	CAMPBELL APP CON <b>134.35 307.025</b>	UNICOM <b>122.8 (CTAF) 0</b>
------------------------	---	---------------------------------



ELEV 550	D	TDZE 550
----------	---	----------



1800	2200	CKV	CK LOM SNUFF CKV 5.8	VGSI and descent angles not coincident (VGSI Angle 3.00/TCH 54).
↑	↪	☐		
YORUK CKV (3)				
CKV 0.5				
TCH 50				
1080				
2300				
2.5 NM				
2.8 NM				
CATEGORY	A	B	C	D
S-LOC 35	1080-¾	530 (600-¾)	1080-1¼	530 (600-1¼)
CIRCLING	1080-1	530 (600-1)	1080-1½ 530 (600-1½)	1200-2 650 (700-2)
YORUK FIX MINIMUMS * (DME REQUIRED)				
S-LOC 35	880-¾	330 (400-¾)		
CIRCLING	1000-1 450 (500-1)	1020-1 470 (500-1)	1020-1½ 470 (500-1½)	1200-2 650 (700-2)