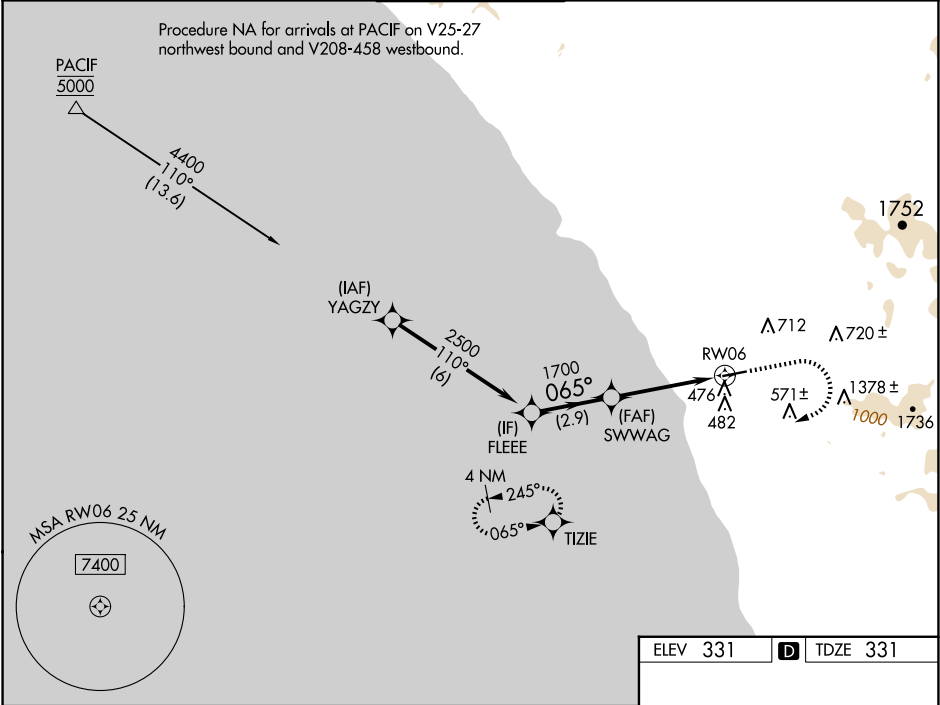


WAAS CH 40239 W06A	APP CRS 065°	Rwy Ldg TDZE Apt Elev	4600 331 331
--	------------------------	-----------------------------	---

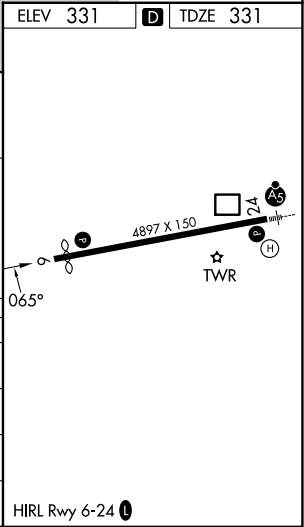
RNAV (GPS) Y RWY 6
MC CLELLAN-PALOMAR (CRQ)

RNP APCH - GPS.	MISSED APPROACH: Climb to 1000 then climbing right turn to 3000 direct TIZIE and hold, continue climb-in-hold to 3000.
▼ ▲	For uncompensated Baro-VNAV systems, LNAV/VNAV NA below 5°C or above 54°C.

ATIS 120.15	SOCAL APP CON 127.3 323.0	PALOMAR TOWER ★ 118.6 (CTAF) 0 276.4	GND CON 121.8	CLNC DEL 134.85
-----------------------	-------------------------------------	--	-------------------------	---------------------------



VGSI and RNAV glidepath not coincident (VGSI Angle 3.00/TCH 35).				
FLEEE				
SWWAG				
2500 065° 1700 2.3 NM to RWY06				
GP 3.00° TCH 55				
2.9 NM 1.8 NM 2.3 NM				
CATEGORY	A	B	C	D
LPV DA	796-1 3/8 465 (500-1 3/8)			
LNAV/VNAV DA	837-1 3/8 506 (600-1 3/8)			
LNAV MDA	1100-1 769 (800-1)	1100-1 1/4 769 (800-1 1/4)	1100-2 1/2 769 (800-2 1/2)	
CIRCLING	1100-1 769 (800-1)	1100-1 1/4 769 (800-1 1/4)	1260-2 3/4 929 (1000-2 3/4)	NA



SW-3, 10 JUL 2025 to 07 AUG 2025

SW-3, 10 JUL 2025 to 07 AUG 2025