

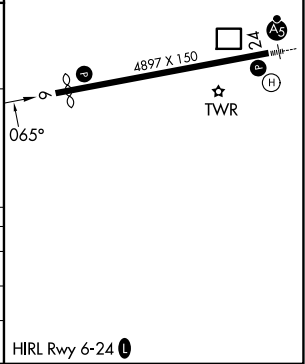
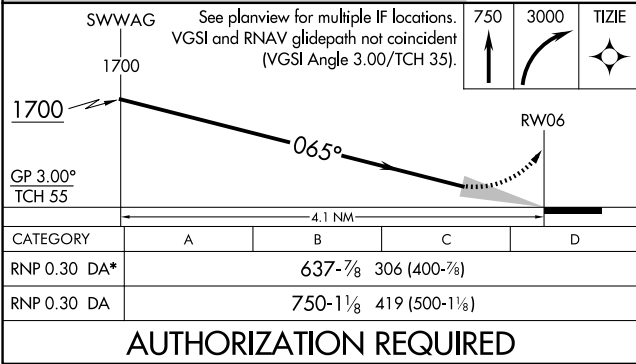
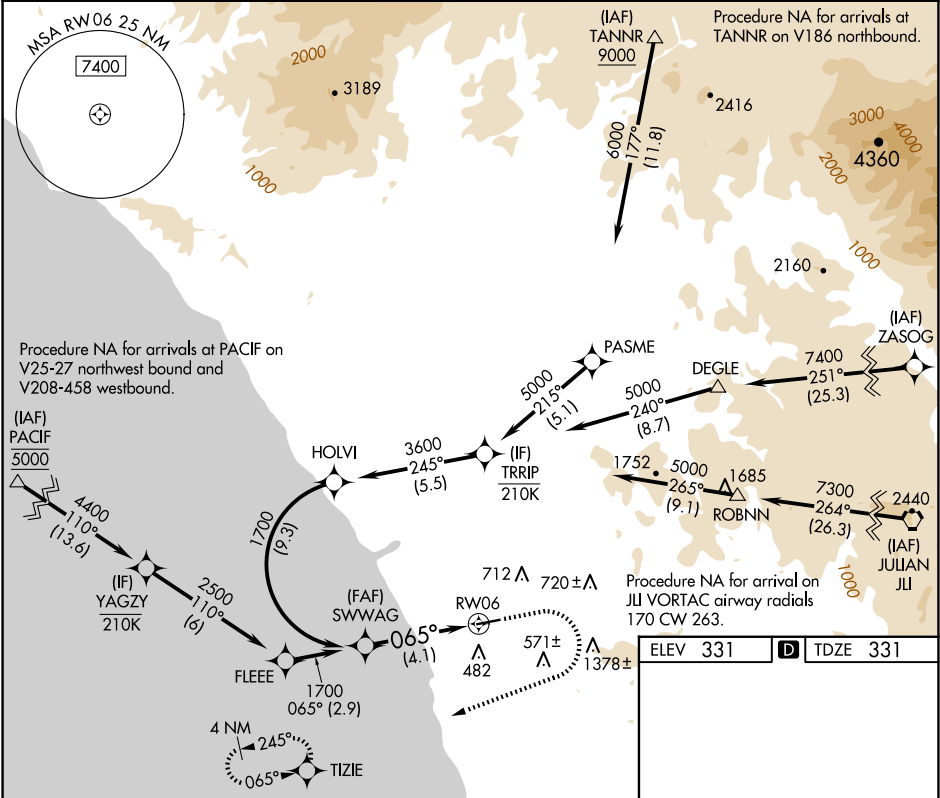
APP CRS	Rwy Ldg	4600
065°	TDZE	331
	Apt Elev	331

# RNAV (RNP) Z RWY 6

MC CLELLAN-PALOMAR (CRQ)

RNP AR APCH - GPS. Authorization required. From HOLVI: RF	MISSED APPROACH: Climb to 750 then climbing right turn to 3000 direct TIZIE and hold, continue climb-in-hold to 3000. *Missed approach requires minimum climb of 280 feet per NM to 1800.
▼ For uncompensated Baro-VNAV systems, procedure NA below 5°C or above 54°C.	

ATIS 120.15	SOCAL APP CON 127.3 323.0	PALOMAR TOWER★ 118.6 (CTAF) 0 276.4	GND CON 121.8	CLNC DEL 134.85
----------------	------------------------------	--	------------------	--------------------



## AUTHORIZATION REQUIRED

SW-3, 10 JUL 2025 to 07 AUG 2025

SW-3, 10 JUL 2025 to 07 AUG 2025