

APP CRS  
**245°**

Rwy Ldg	<b>4897</b>
TDZE	<b>326</b>
Apt Elev	<b>331</b>

## RNAV (RNP) Z RWY 24

MC CLELLAN-PALOMAR (CRQ)

RNP AR APCH - GPS. Authorization required. From PALCI or EGIVE: RF, from CARCA, PALCI, URIJJ, or WAGAV: min RNP 0.30. From JJJ VORTAC: min RNP 0.60.

**T** For uncompensated Baro-VNAV systems, procedure NA below 5°C or above 54°C. For inop ALS increase RNP 0.10 visibility to RVR 6000 and RNP 0.30 visibility to 1¾ SM all Cats.

MALSR



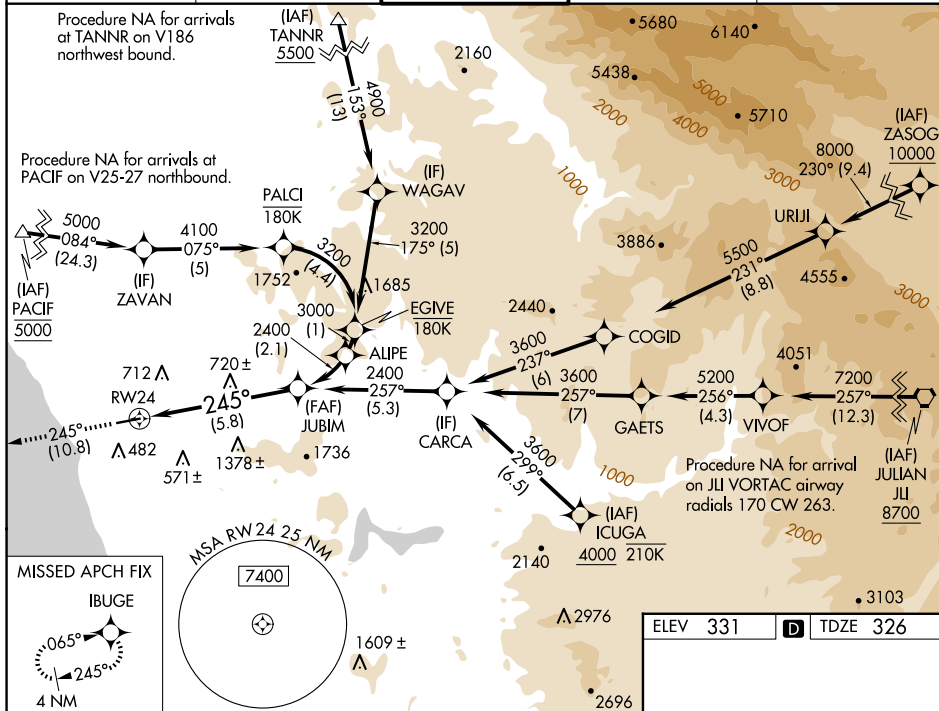
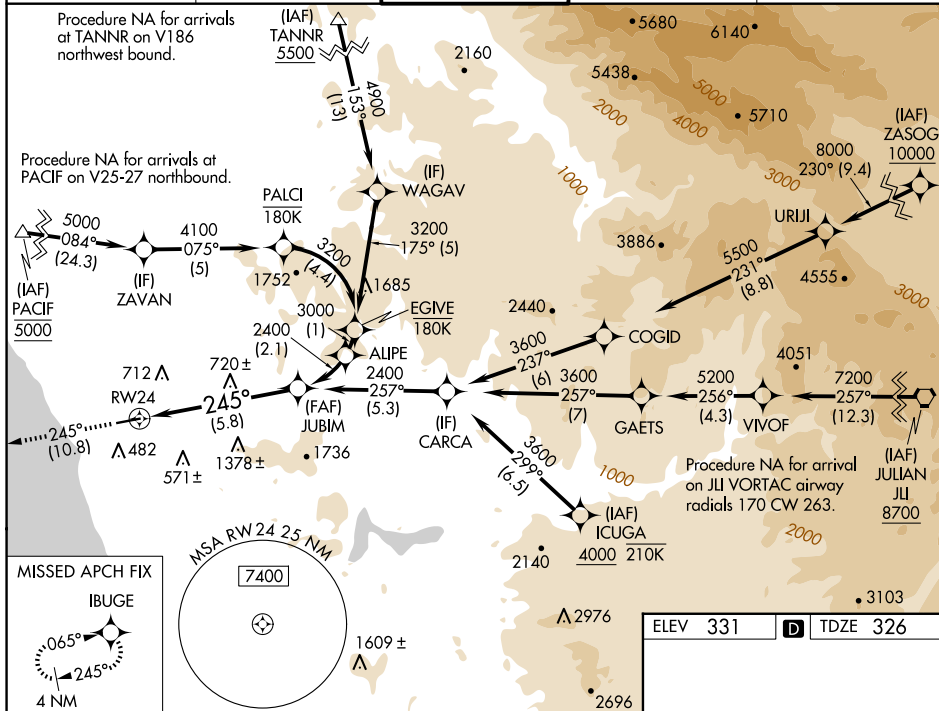
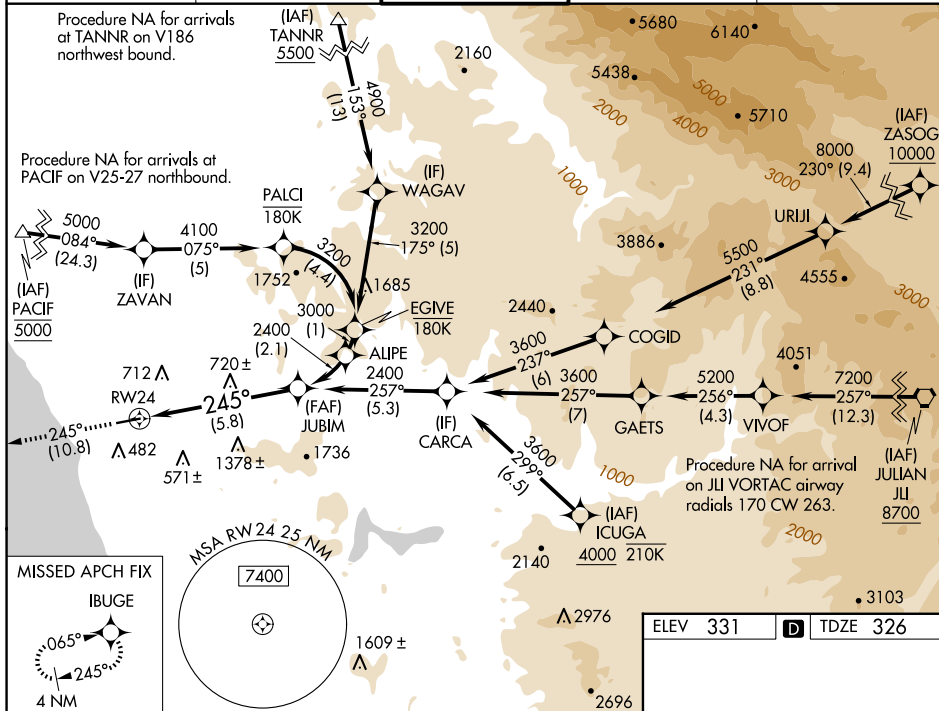
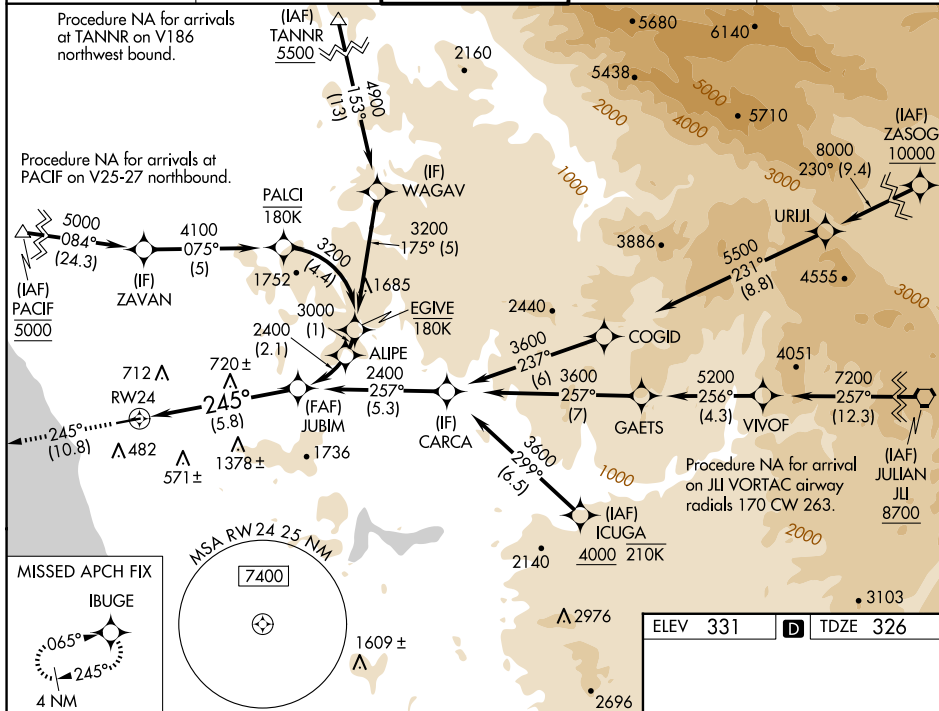
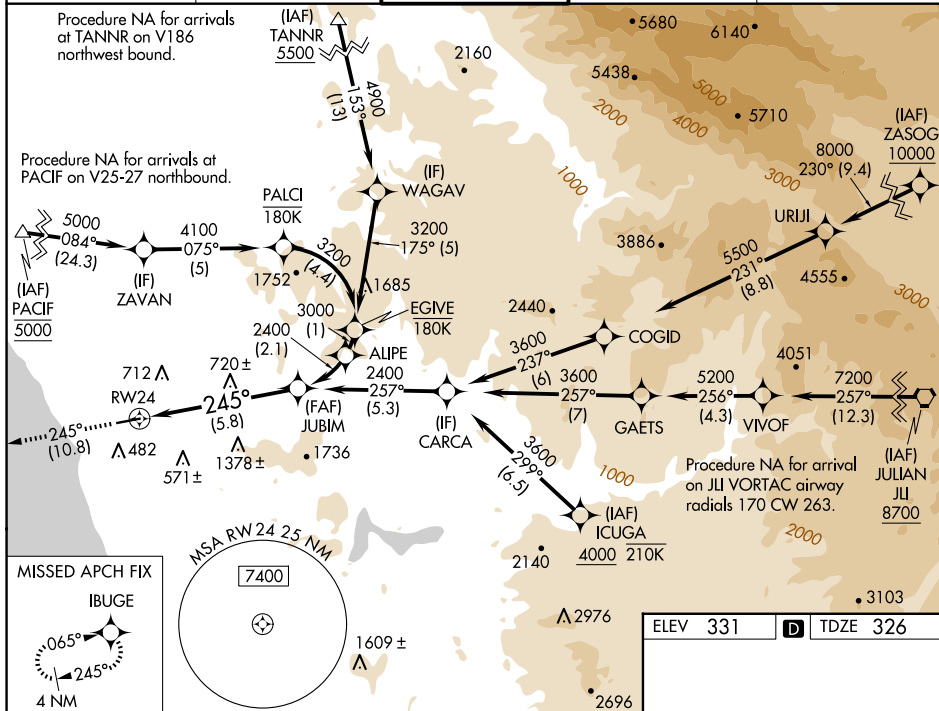
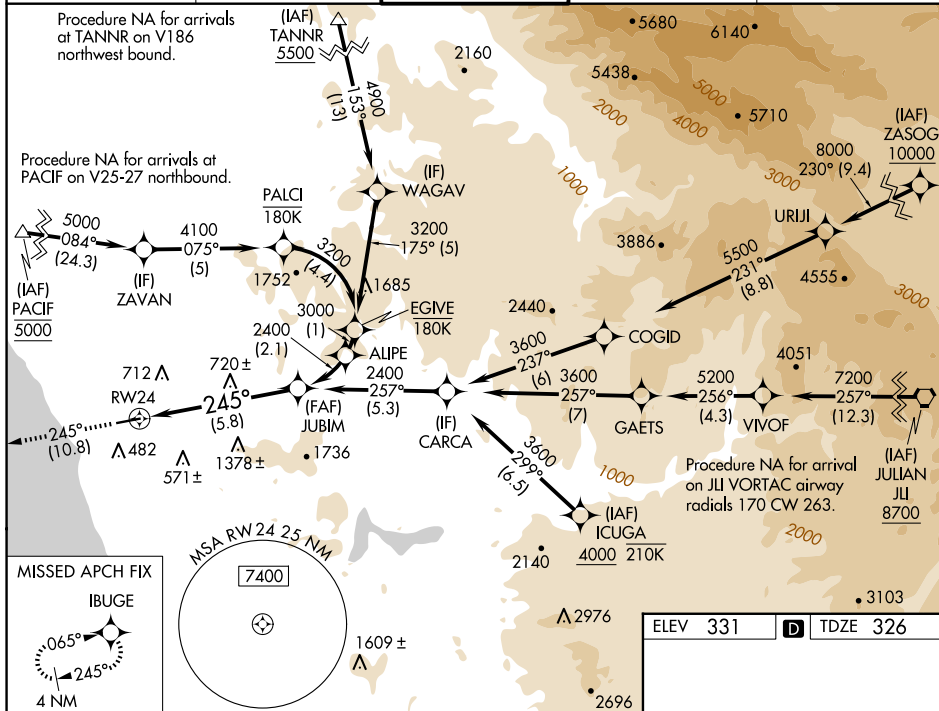
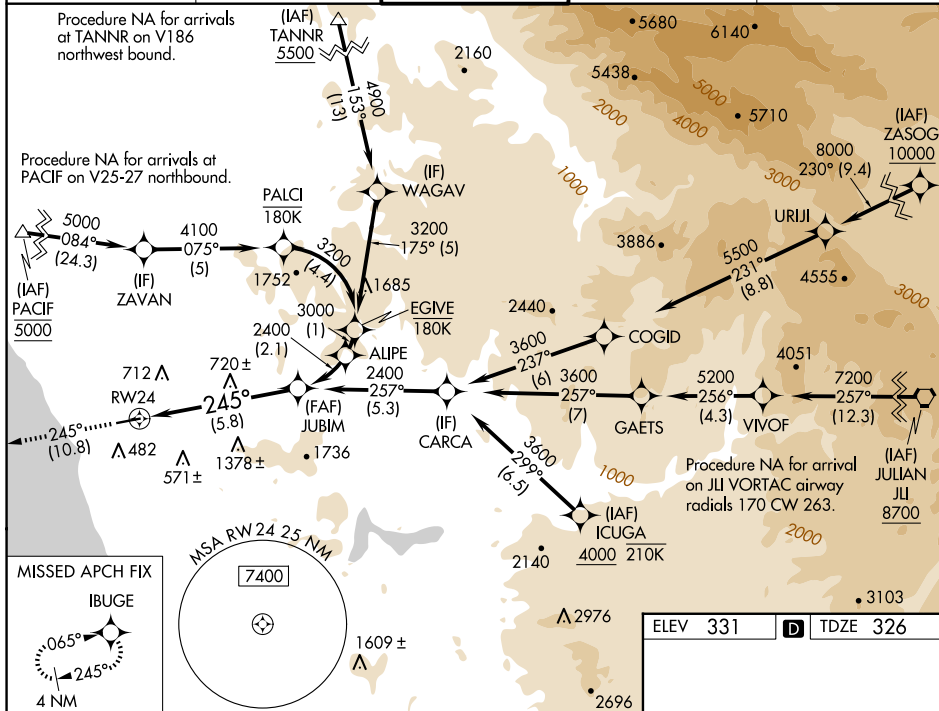
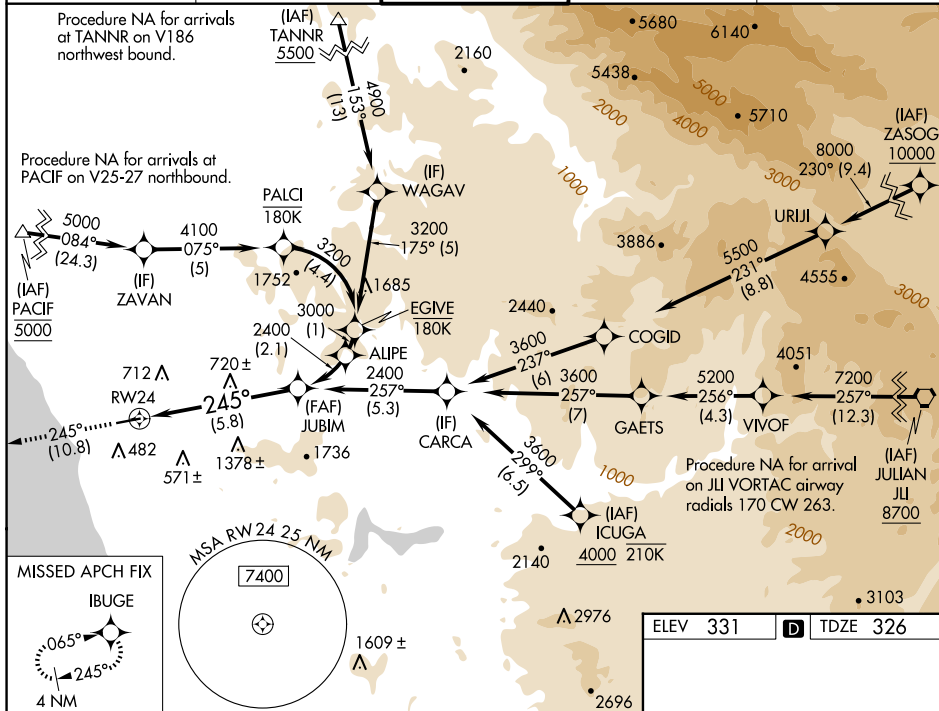
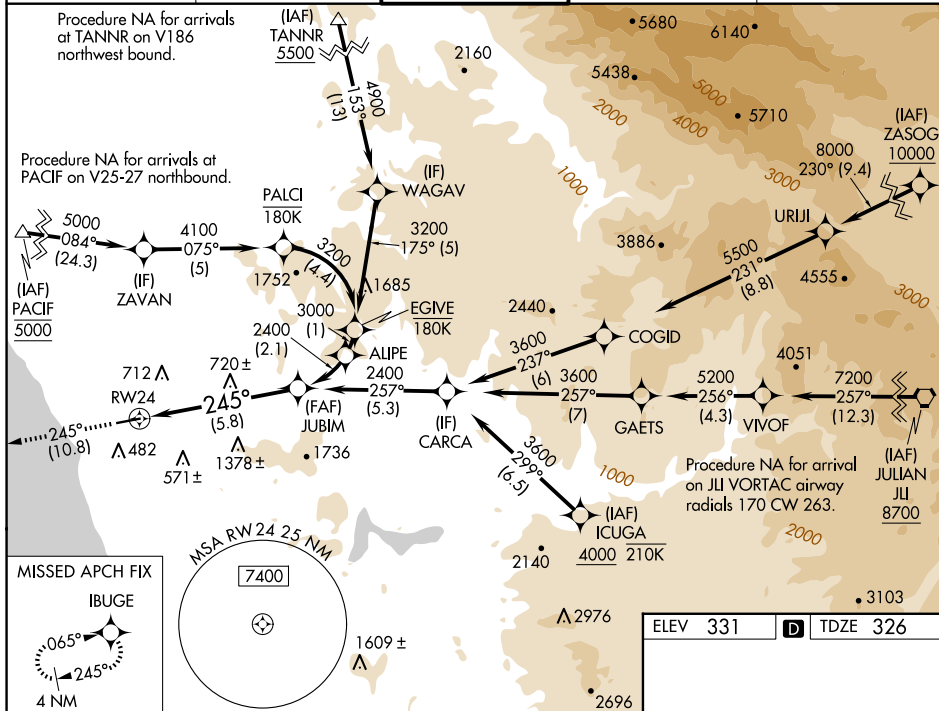
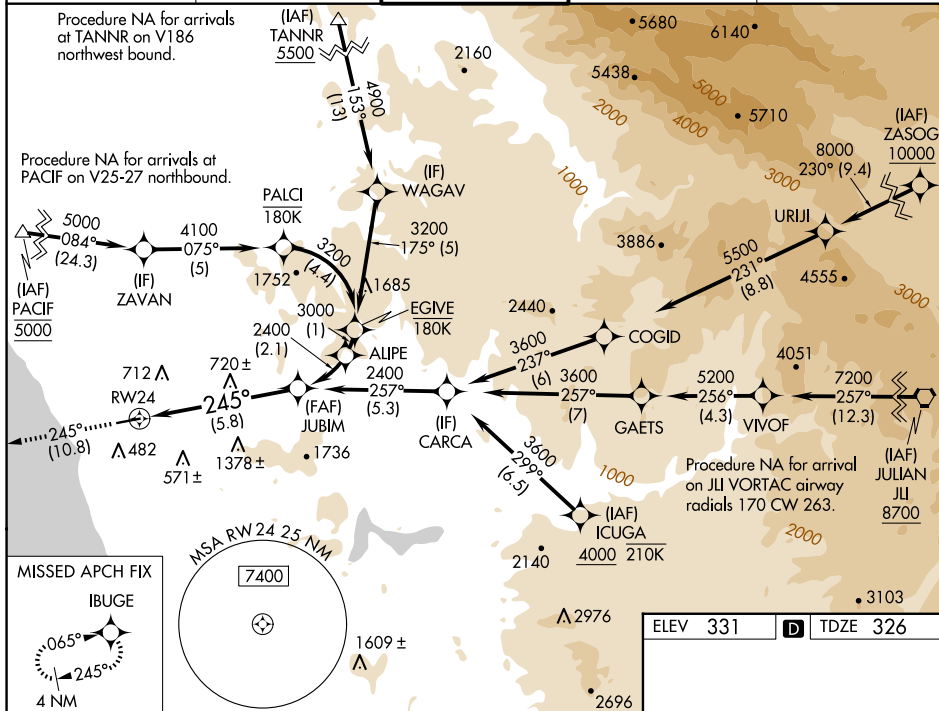
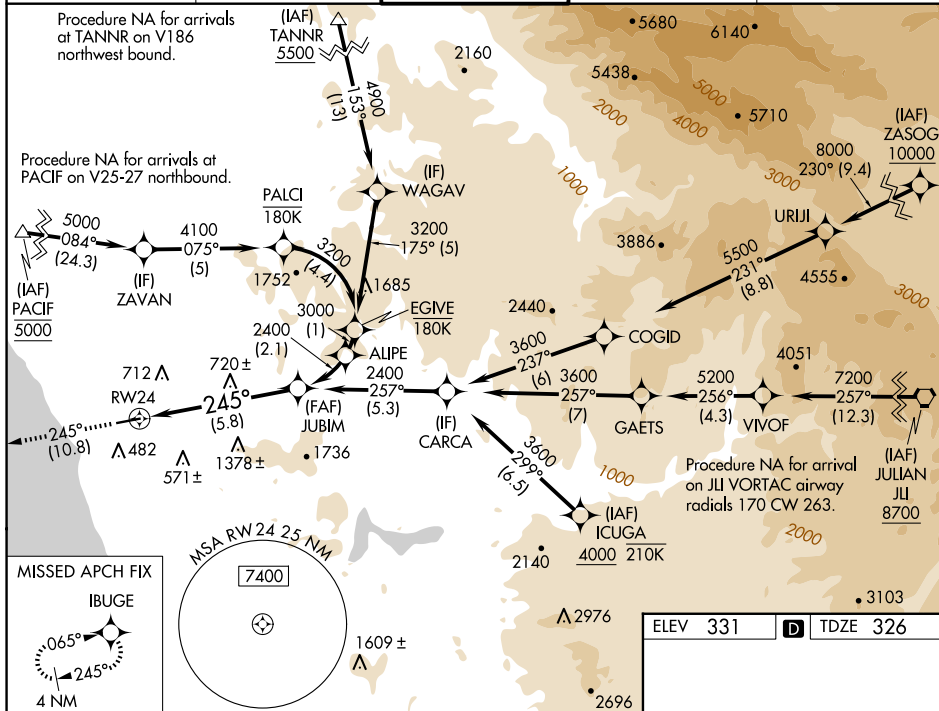
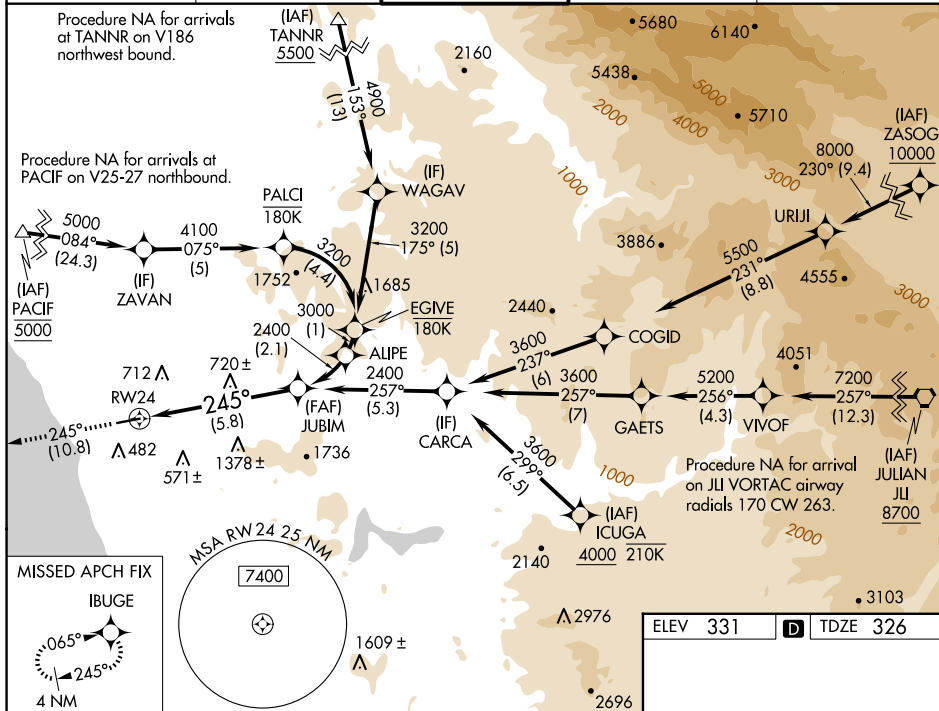
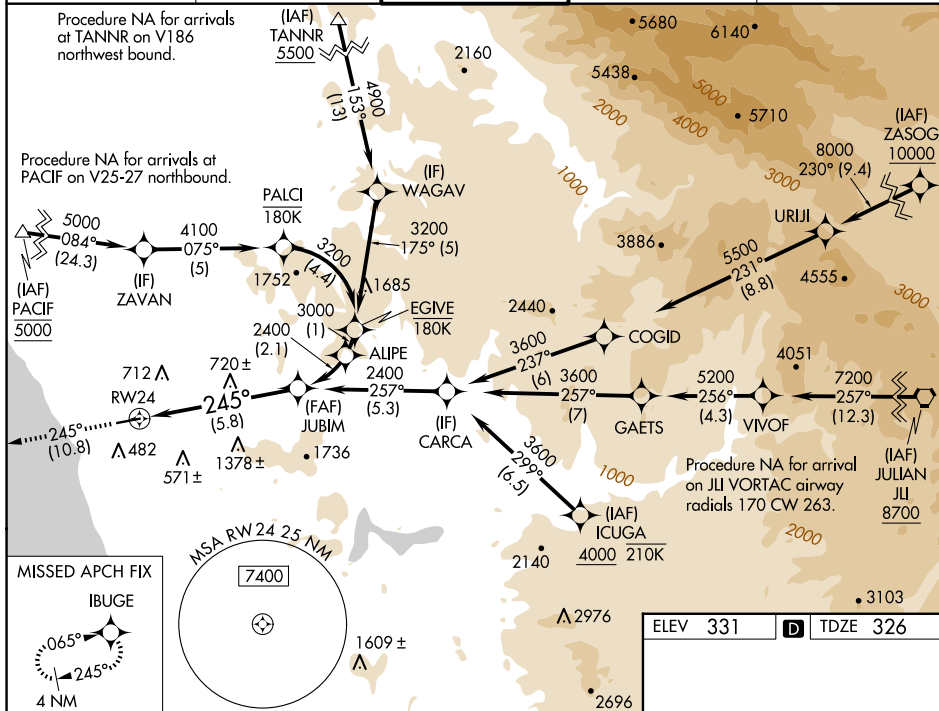
**MISSED APPROACH:** Climb to 2000 on track 245° to IBUGE and hold.

ATIS  
120.15

SOCAL APP CON  
127.3 323.0

PALOMAR TOWER★  
118.6 (CTAF) **L** 276.4

GND CON  
**121.8**

CLNC DEL  
**134.85**

**AUTHORIZATION REQUIRED**

HIRL Rwy 6-24 **L**