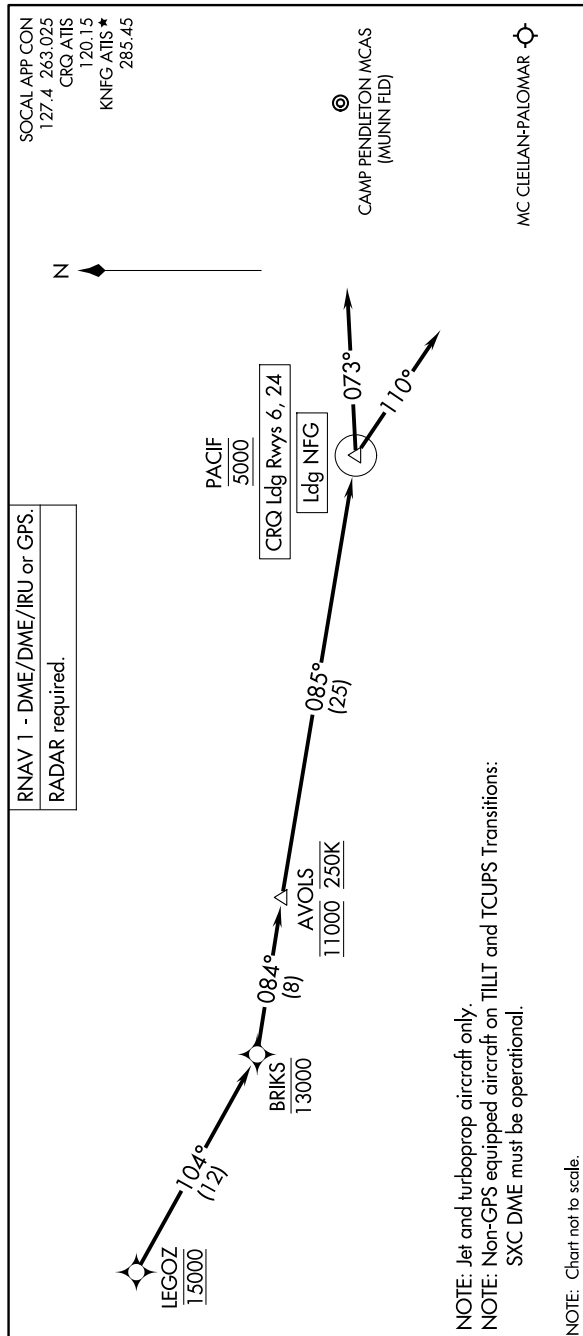


LEGOZ THREE ARRIVAL (RNAV) Arrival Routes

CARLSBAD, CALIFORNIA



ARRIVAL ROUTE DESCRIPTION

LANDING NFG: From LEGOZ on track 104° to cross BRIKS at or below 13000, then on track 084° to cross AVOIS at 11000 and at 2250K, then on track 085° to cross PACIF at 5000, then on track 073°. Expect RADAR vectors to final approach course.

LANDING CRQ RUNWAY 6: From LEGOZ on track 104° to cross BRIKS at or below 13000, then on track 084° to cross AVOLIS at 11000 and at 250K, then on track 085° to cross PACIF at 5000, then on track 110°. Expect RNAV (RNP) Z RWY 6 approach or RADAR vectors to final approach course.

LANDING CRQ RUNWAY 24: From LEGOZ on track 104° to cross BRIKS at or below 13000, then on track 084° to cross AVOLTS at 11000 and at 250K, then on track 085° to cross PACIF at 5000, then on track 110°. Expect RADAR vectors to final approach course: 11000 and at 250K, then on track 085° to cross PACIF at 5000, then on track 110°. Expect RADAR vectors to final approach course:

SW-3, 10 JUL 2025 to 07 AUG 2025

LEGOZ THREE ARRIVAL (RNAV) Arrival Routes

CARLSBAD, CALIFORNIA