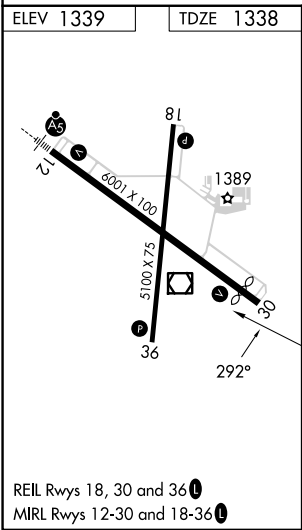
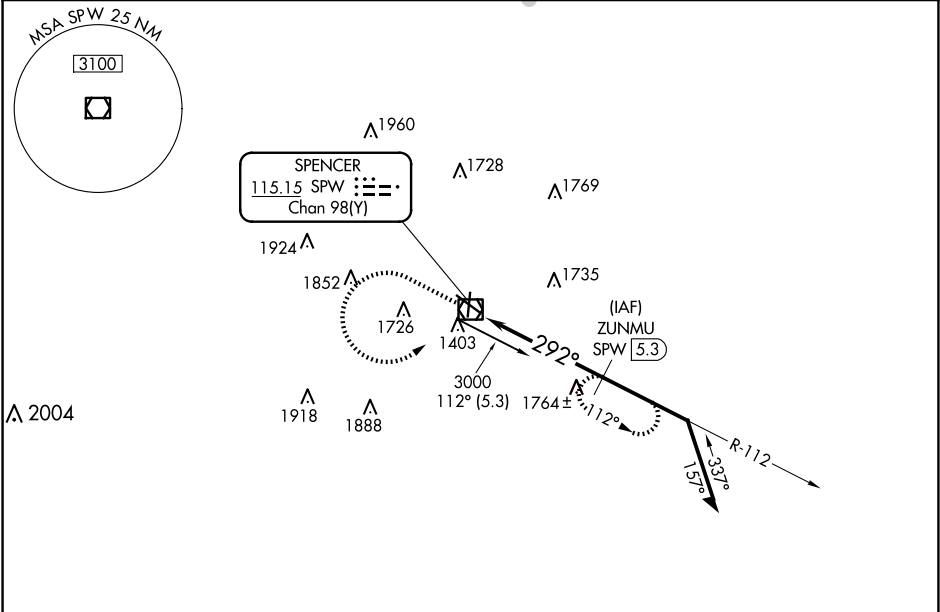


VOR/DME SPW <b>115.15</b> Chan <b>98(Y)</b>	APP CRS <b>292°</b>	Rwy Idg TDZE <b>1338</b> Apt Elev <b>1339</b>
---	------------------------	---

VOR RWY 30  
SPENCER MUNI (SPW)

DME required.	MISSED APPROACH: Climb to 3000, then left turn direct SPW VOR/DME, then on SPW VOR/DME R-112 to ZUNMU/SPW 5.3 DME and hold.
▼ VDP NA when using Estherville altimeter setting. ▲ When local altimeter setting not received, use Estherville altimeter setting and increase all MDA 60 feet and increase S-30 Cat C/D visibility ½ SM and Circling Cat C/D visibility ¼ SM.	

ASOS <b>126.625</b>	MINNEAPOLIS CENTER <b>127.75 257.7</b>	UNICOM <b>123.0 (CTAF) 0</b>
------------------------	---	---------------------------------



3000	SPW R-112	ZUNMU SPW 5.3	ZUNMU SPW 5.3	Remain within 10 NM
SPW VOR/DME	SPW 2.4	≤ 3.01° TCH 40	3000	292°
2.2 NM	2.9 NM			
CATEGORY	A	B	C	D
S-30	2080-1 742 (800-1)	2080-1¼ 742 (800-1¼)	2080-2 742 (800-2)	
CIRCLING	2080-1 741 (800-1)	2080-1¼ 741 (800-1¼)	2100-2¼ 761 (800-2¼)	2100-2½ 761 (800-2½)