

WAAS CH <b>56517</b> <b>W12A</b>	APP CRS <b>121°</b>	Rwy Idg TDZE Apt Elev	<b>6001</b> <b>1339</b> <b>1339</b>
----------------------------------------	------------------------	-----------------------------	-------------------------------------------

RNAV (GPS) RWY 12

SPENCER MUNI (SPW)

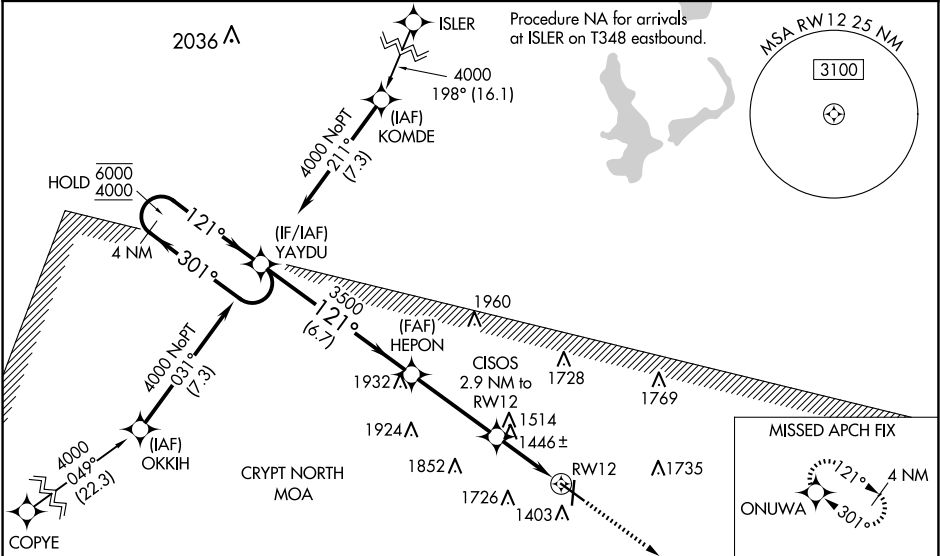
RNP APCH+GPS.

Baro-VNAV and VDP NA when using Estherville altimeter setting. For uncompensated Baro-VNAV systems, LNAV/VNAV NA below -21 °C or above 54 °C. When local altimeter setting not received, use Estherville altimeter setting: increase LPV DA to 1599 feet, LNAV/VNAV DA to 1650 feet; increase all MDAs 60 feet, and visibility LNAV Cat C/D ½ SM, and Circling Cat C/D ¼ SM. For inop ALS when using Estherville altimeter setting, increase LNAV/VNAV all Cats visibility to ¾ SM and LNAV Cats C/D to 1 SM. For inop ALS, increase LNAV/VNAV all Cats visibility to ¾ SM and LNAV Cat C/D to 1 SM.

MALSRL

MISSED APPROACH:  
Climb to 4000 direct  
ONUWA and hold.

ASOS <b>126.625</b>	MINNEAPOLIS CENTER <b>127.75 257.7</b>	UNICOM <b>123.0</b> (CTAF) <b>1</b>
------------------------	-------------------------------------------	----------------------------------------



VGSI and RNAV glidepath not coincident (VGSI Angle 3.00/TCH 45).

4000

ONUWA

4 NM Holding Pattern

6000

4000

GP 3.00°

TCH 49

YAYDU

HEPON

CISOS 2.9 NM to RWY 12

1 NM to RWY 12

RWY 12

6.7 NM

3.8 NM

1.9 NM

1 NM

CATEGORY	A	B	C	D
LPV DA		1539-½ 200 (200-½)		
LNAV/VNAV DA		1590-½ 251 (300-½)		
LNAV MDA	1700-½ 361 (400-½)		1700-⅝ 361 (400-⅝)	
CIRCLING	1760-1 421 (500-1)	1800-1 461 (500-1)	2100-2¼ 761 (800-2¼)	2100-2½ 761 (800-2½)

REIL Rwy 18, 30 and 36

MIRL Rwy 12-30 and 18-36