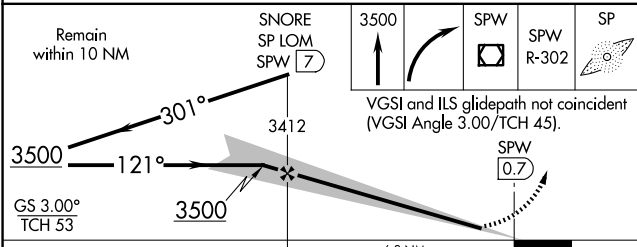
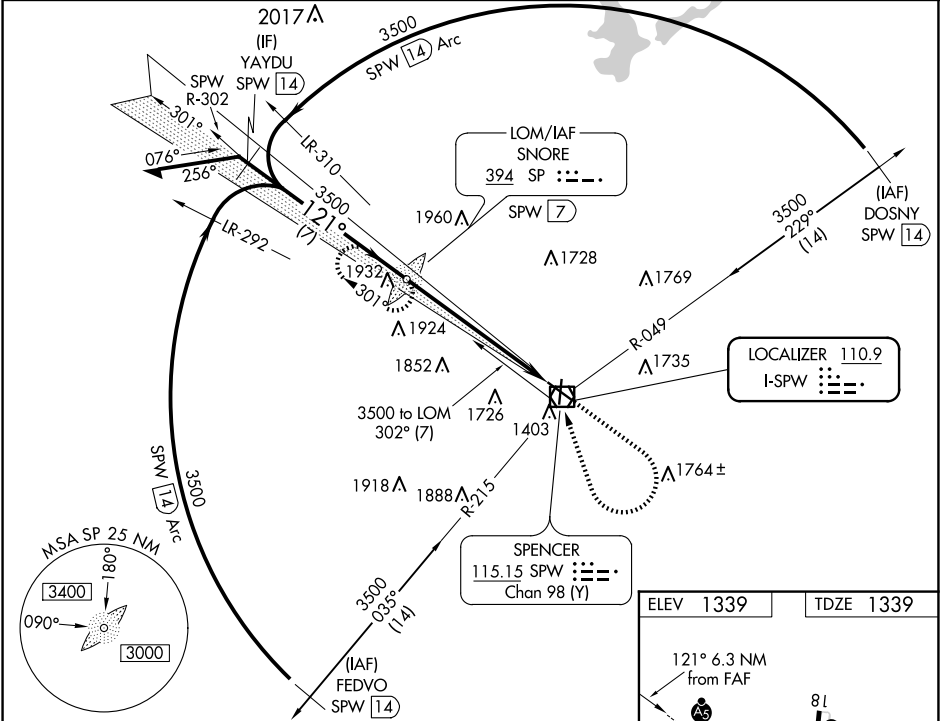


LOC I-SPW <b>110.9</b>	APP CRS <b>121°</b>	Rwy Idg TDZE Apt Elev <b>6001</b> <b>1339</b> <b>1339</b>
---------------------------	------------------------	--

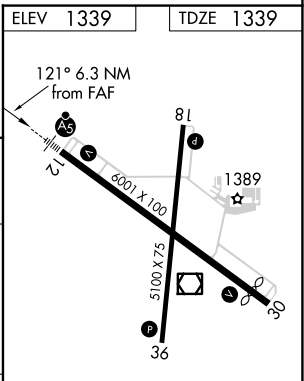
ILS or LOC RWY 12  
SPENCER MUNI (SPW)

ADF or DME required.	MALSR	MISSED APPROACH: Climb to 3500 then right turn direct SPW VOR/DME then on SPW VOR/DME R-302 to SNORE LOM/SPW VOR/DME 7 DME and hold.
NA For inop ALS, increase S-LOC 12 Cats C and D visibility to 1 1/2 SM. When local altimeter setting not received, use Estherville altimeter setting and increase S-ILS 12 DA to 1599 feet; increase all MDAs 60 feet and S-LOC 12 visibility Cat C/D 1/2 SM, and Circling visibility Cat C/D 1/2 SM. For inop ALS, when using Estherville altimeter setting, increase S-LOC 12 Cats C and D visibility to 1 1/2 SM.		

ASOS <b>126.625</b>	MINNEAPOLIS CENTER <b>127.75 257.7</b>	UNICOM <b>123.0 (CTAF)</b>
------------------------	---	-------------------------------



CATEGORY	A	B	C	D
S-ILS 12	1539-1/2 200 (200-1/2)			
S-LOC 12	1900-1/2 561 (600-1/2)		1900-1 1/4 561 (600-1 1/4)	
CIRCLING	1900-1 561 (600-1)		2100-2 1/4 761 (800-2 1/4)	



REIL Rwy 18, 30 and 36					
MRL Rwy 12-30 and 18-36					
FAF to MAP 6.3 NM					
Knots	60	90	120	150	180
Min:Sec	6:18	4:12	3:09	2:31	2:06

NC-3, 10 JUL 2025 to 07 AUG 2025

NC-3, 10 JUL 2025 to 07 AUG 2025