


RNAV (GPS) RWY 9

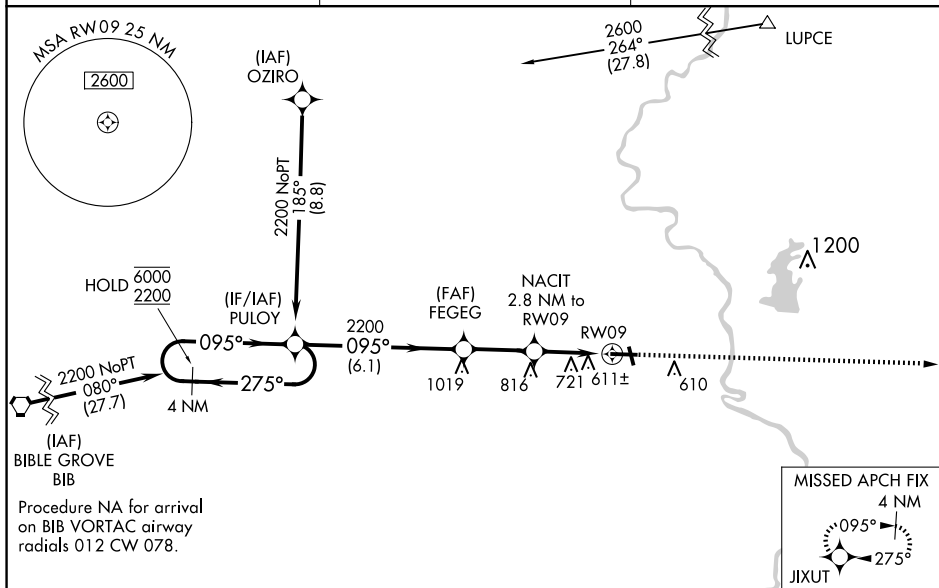
CRAWFORD COUNTY (RSV)

T
A Rwy 9 helicopter visibility reduction below $\frac{3}{4}$ SM NA.
For uncompensated Baro-VNAV systems,
LNAV/VNAV NA below -15° C or above 54° C.

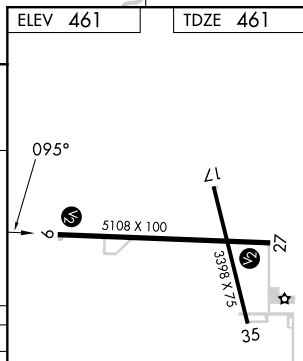
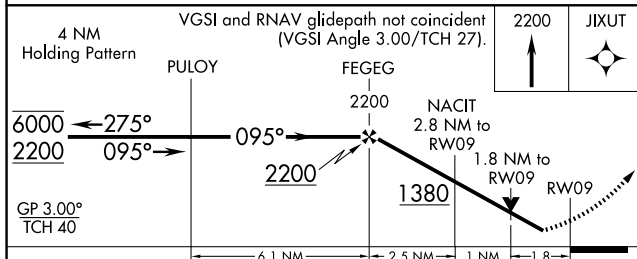
MISSED APPROACH:
Climb to 2200 direct
JIXUT and hold.


HULMAN APP CON
135.35 339.8

UNICOM
123.0 (CTAF) 



EC-3, 10 JUL 2025 to 07 AUG 2025



CATEGORY		A	B	C	D
LPV	DA	805-1½ 344 (400-1½)			
LNAV/ VNAV	DA	1103-2½ 642 (700-2½)			
LNAV	MDA	1040-1 579 (600-1)		1040-1½ 579 (600-1½)	
 CIRCLING		1040-1 579 (600-1)	1080-1 619 (700-1)	1120-1¾ 659 (700-1¾)	1180-2¼ 719 (800-2¼)

REIL Rwys 17, 9 and 27 **L**
MIRL Rwys 9-27 and 17-35 **L**