

WAAS CH 63033 W17A	APP CRS 169°	Rwy Idg 3398 TDZE 455 Apt Elev 461
--	------------------------	---

RNAV (GPS) RWY 17

RNP APCH - GPS.



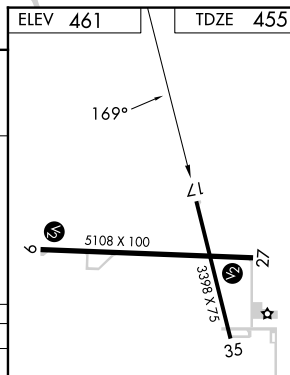
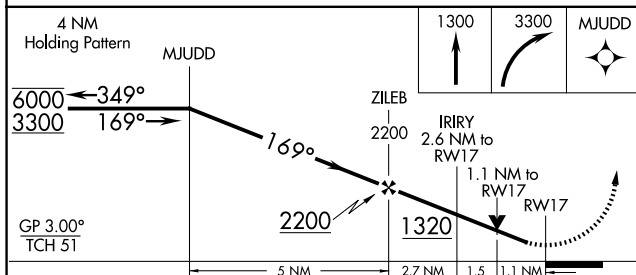
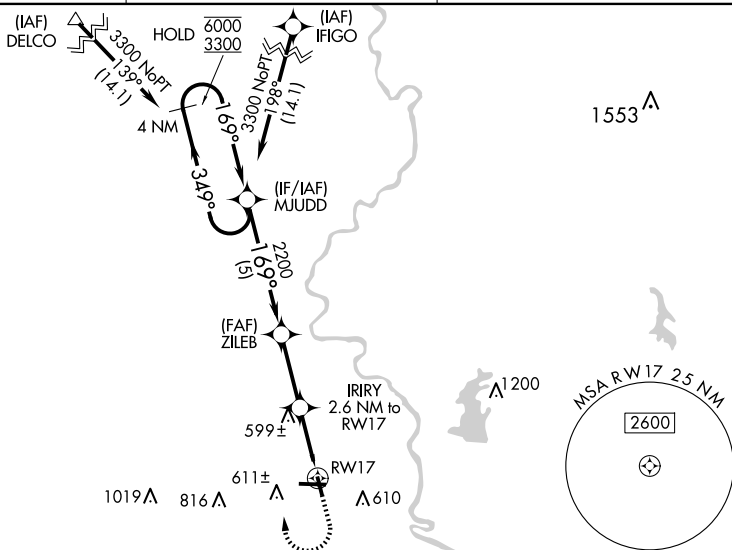
Rwy 17 helicopter visibility reduction below $\frac{3}{4}$ SM NA.
For uncompensated Baro-VNAV systems,
LNAV/VNAV NA below -15°C or above 54°C.


MISSED APPROACH: Climb to 1300 then climbing right turn to 3300 direct MJUDD and hold.

AWOS-3
120.50

HULMAN APP CON
135.35 339.8

UNICOM
123.0 (CTAF) **L**



CATEGORY	A	B	C	D
LPV DA	734-1 279 (300-1)			NA
LNAV/ VNAV DA	812-1½ 357 (400-1½)			NA
LNAV MDA	860-1 405 (400-1)		860-1½ 405 (400-1½)	NA
 CIRCLING	940-1 479 (500-1)	1080-1 619 (700-1)	1120-1¾ 659 (700-1¾)	NA

REIL Rwy 17, 9 and 27 **L**
MIRL Rwy 9-27 and 17-35 **L**