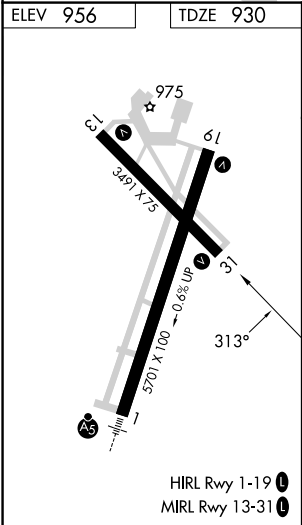
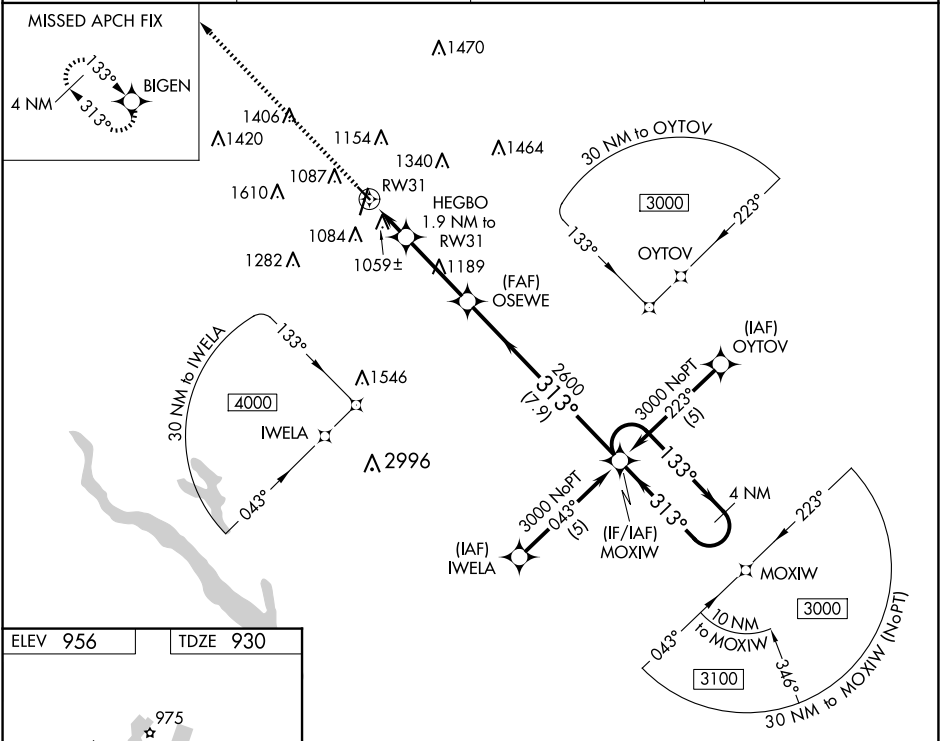





WAAS CH <b>90517</b> <b>W31A</b>	APP CRS <b>313°</b>	Rwy Ldg TDZE Apt Elev	<b>3491</b> <b>930</b> <b>956</b>
--	------------------------	-----------------------------	---

RNAV (GPS) RWY 31  
AMES MUNI (AMW)

RNP APCH.	MISSED APPROACH: Climb to 3000 direct BIGEN and hold.
-26°C	For uncompensated Baro-VNAV systems, LNAV/VNAV NA below -16°C or above 54°C. Rwy 31 helicopter visibility reduction below ¾ SM NA.

ASOS <b>132.025</b>	DES MOINES APP CON <b>123.9 307.15</b>	CLNC DEL <b>126.0</b>	UNICOM <b>122.7 (CTAF) 0</b>
------------------------	---	--------------------------	---------------------------------



3000	BIGEN				
					
*LNAV only	HEGBO 1.9 NM to RW31	OSEWE 2600	MOXIW	4 NM Holding Pattern	
	*1.1 NM to RW31	2600	133° →	← 313°	3000
		1560*	313°		GP 3.00° TCH 36
	1.1 NM	0.8	3.2 NM	7.9 NM	
CATEGORY	A	B	C	D	
LPV DA	1205-1 275 (300-1)			NA	
LNAV/VNAV DA	1436-1¾ 506 (500-1¾)			NA	
LNAV MDA	1320-1 390 (400-1)			NA	

NC-3, 10 JUL 2025 to 07 AUG 2025

NC-3, 10 JUL 2025 to 07 AUG 2025